



METPAR TOILET PARTITIONS

## MATERIALS & LAYOUTS



FP-500

# CORINTHIAN

OVERHEAD-BRACED

The FP-500 Corinthian Overhead-Braced style compartment is structurally sound, created for areas where strength is required, and installation considerations prevent other options.

The FP-500 Corinthian configuration is available in all five materials: Powder Shield (powder coated baked enamel), Stainless Steel, Plastic Laminate, Phenolic, and Solid Plastic (Polly®, HDPE).



FT-700

# LUXOR

FLOOR MOUNTED

The FT-700 Luxor Floor Mounted style is ideal for restrooms with concrete floors. It provides a clean sight line appearance across the top of the panels, doors, and pilasters for a modern sleek look. It eliminates the need for headrail across the top of the stalls.

The FT-700 Luxor Floor Mounted configuration is available in all five materials: Powder Shield (powder coated baked enamel), Stainless Steel, Plastic Laminate, Phenolic, and Solid Plastic (Polly®, HDPE).







CH-700

# FORUM

## CEILING HUNG

The CH-700 Forum Ceiling Hung style is ideal for restroom maintenance, as it provides unobstructed floor space underneath the stalls, especially when you combine this design with wall mounted fixtures. These ceiling-supported pilasters are appropriate for drop and span-type ceiling systems.

Similar to this configuration, we can also provide a floor to ceiling pilaster style (not shown) that provides the utmost in strength and durability.

The CH-700 Forum Ceiling Hung configuration is available in all five materials: Powder Shield (powder coated baked enamel), Stainless Steel, Plastic Laminate, Phenolic, and Solid Plastic (Polly®, HDPE).



FT-700E

# DORIAN

## FLOOR MOUNTED / EASTERN AND MIDDLE EASTERN STYLE

The FT-700E Dorian provides the maximum in personal privacy. This style provides complete head-to-toe coverage, which meets the stringent standards required by Eastern and Middle Eastern cultures.

The FT-700E Dorian Floor Mounted/ Eastern Style configuration is available in all five materials: Powder Shield (powder coated baked enamel), Stainless Steel, Plastic Laminate, Phenolic, and Solid Plastic (Polly®, HDPE). FT-700 design pictured. Also available in FP-500, CH-700, and floor to ceiling. (Panel and doors are shown with 3" elevation. Other elevations available.)

# POWDER SHIELD

(POWDER COATED BAKED ENAMEL)



Powder coated steel is popular for its economy and durability. The galvanneal steel provides strong adhesion for a durable smooth powder painted finish. This surface is three times more resistant to humidity and salt spray than solvent based painted finishes. It's easier to clean, and is available in many colors. System features emergency outside access to stall.

Construction features 1" thick doors and panels, 1-1/4" pilasters, constructed of two sheets of galvanneal steel, formed and cemented under pressure to a honeycomb core. All edges are finished with 20-gauge interlocking steel moldings. Corners are welded and finished with pre-formed stainless steel reinforcements. Doors feature steel reinforcements to secure hardware items, with "in-use" indicator latch. Rust inhibitive coated material is painted with multiple coats of epoxy-hybrid powder, applied electrostatically and baked until cured. Standard wall fittings are chrome-plated die-cast zamac.

**Options Include:**

- Additional colors
- Continuous brackets
- Stainless steel hardware
- Privacy strips

**Powder Shield Standard Colors**  
(Baked Epoxy-hybrid Coating)



# STAINLESS STEEL



Stainless steel lends a feeling of luxury and a modern appearance to any restroom environment. Stainless steel proves to be a wise selection for its ease of cleaning, durability, and resistance to humid conditions. Optional solid plywood core provides for an extra strong virtually vandal proof installation.

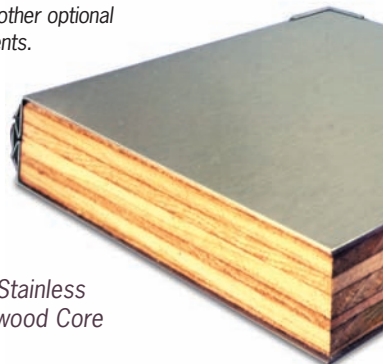
Standard construction features 1" thick doors and panels, 1-1/4" pilasters, constructed of type 304 stainless steel, formed and cemented under pressure to a double faced honeycomb core. All edges are finished with a 20-gauge stainless steel interlocking molding. Corners are welded internally and are finished with pre-formed stainless steel reinforcements. Doors have internal steel reinforcements to secure hardware items, and come equipped with the "in-use" color-coded indicator. Wall fittings are chrome plated die-cast zamac. All flat stainless surfaces are provided with a #4 satin finish. Hardware features emergency outside access to stall.

**Options Include:**

- Leather-grain stainless finish
- 5SM pattern stainless finish
- Plywood core
- Stainless steel hardware
- Continuous brackets

**Stainless Steel**

Stainless steel is almost impervious to graffiti and scratches. Any damage can simply be buffed to return the surface to its original finish. Add the benefits of corrosion resistance and timeless appeal, and you have a partition built to last a lifetime. Stainless steel is offered in #4, textured leather grain finish, 5SM diamond pattern or other optional embossments.



Optional Stainless Steel Plywood Core

# PLASTIC LAMINATE



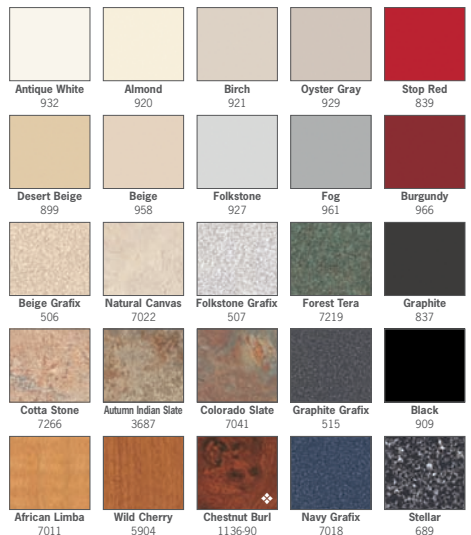
Beautiful appearance with tremendous flexibility. Plastic laminate requires minimal care, coupled with low initial cost. The finish is available in many designer colors and wood grain textures to appeal to any decorating taste, and will resist any cosmetic damage. Hardware features emergency outside access to stall.

Doors and panels are nominal 1" (7/8"), pilasters 1-1/4", and are constructed of high-pressure decorative laminate over 3-ply core, resin-impregnated, 45-pound density particleboard. Wall and pilaster-to-panel fittings are chrome-plated die-cast zamac.

**Options Include:**

- Stainless steel edge molding
- Stainless steel hardware
- Full height brackets
- Additional colors and finishes
- Plywood core panels
- Steel core pilasters

**Standard Plastic Laminate Colors**  
(Many more available – Contact Factory)



Also available in White - 949  
❖ Premium colors available at a slightly higher cost.

# POLLY®

## SOLID PLASTIC HDPE

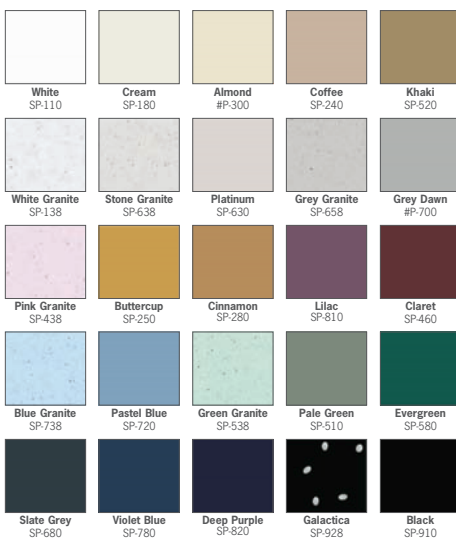


Our Solid Plastic material provides an excellent choice for high traffic and vandalism-prone restrooms. It is ideal for high humidity areas, or where hose-down cleaning methods are used. All doors, panels, and pilasters are constructed of 1" solid plastic High Density Polyethylene (HDPE). This material features homogeneous color and material compound throughout. Our Solid Plastic is scratch, dent, and graffiti resistant, and will never rust. Our standard hinge is an integral hinge system. We offer 25 popular colors, with a choice of either heavy gauge stainless steel shoes and full-length aluminum brackets, or matching plastic shoes and matching full-length plastic brackets. The plastic shoes and brackets are non-absorbent and corrosion proof, plus the full-length bracket strengthens the installation. Hardware features emergency access to stall. This type of material construction is perfect for schools, stadiums, office buildings, parks, airports, or any high-traffic washroom.

### Options Include:

- Full height s.s. multi-cam hinge
- Aluminum wrap around hinge
- Class A & B fire rated material
- 100% post consumer

### Solid Plastic Standard Colors



Call factory for fire rated colors

# PHENOLIC



Solid Phenolic is a unique material designed especially for full water contact. It is ideal for high humidity areas, or where hose-down cleaning methods are used. The superior strength of phenolic offers many advantages, including overall damage resistance. Phenolic exceeds the Fire Protection Association's recommendation for smoke production. The finish is available in hundreds of designer colors and wood grain textures to appeal to any decorating taste. Hardware features emergency outside access to stall.

Solid Phenolic doors and pilasters are 3/4" thick, panels are 1/2" thick, and come with a class-B fire rating. All edges are polished and beveled. Wall and pilaster brackets are 13-gauge, type 304 stainless steel. Stainless steel surface hinges are standard. All hardware and fittings are stainless steel.

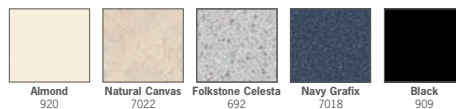
### Options include:

- Aluminum curtain track, glides, and curtains
- Full-height aluminum or stainless steel brackets
- Investment cast stainless steel hardware
- Full-height stainless steel Multi-Cam hinges
- Class-A fire rated material

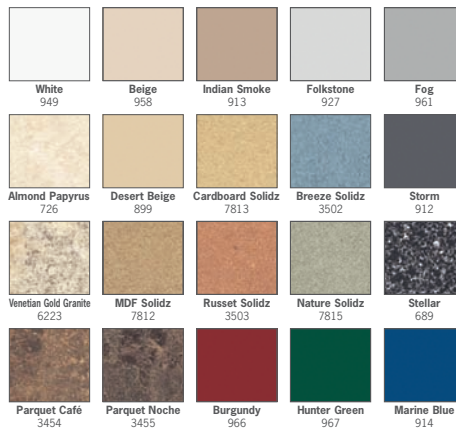
### Phenolic Colors

(Many more available – Contact Factory)

#### Stock Colors



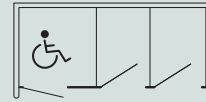
#### Standard Colors



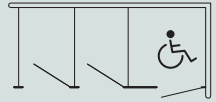
## TYPICAL LAYOUT CONFIGURATIONS

VARIOUS OTHER LAYOUTS CAN BE ENGINEERED. CONSULT FACTORY.

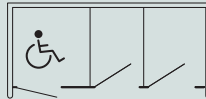
CORNER LEFT



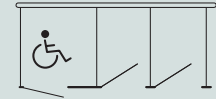
CORNER RIGHT



BETWEEN WALLS



FREE STANDING



ALCOVE - LEFT DOOR



ALCOVE - RIGHT DOOR



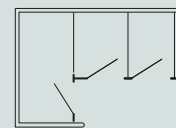
ALCOVE CORNER - LEFT



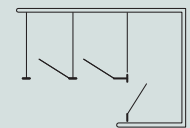
ALCOVE CORNER - RIGHT



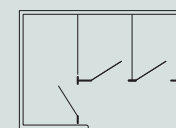
ALCOVE - LEFT WITH STALLS



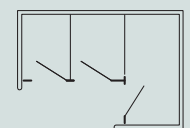
ALCOVE - RIGHT WITH STALLS



ALCOVE - LEFT WITH BETWEEN WALL UNITS

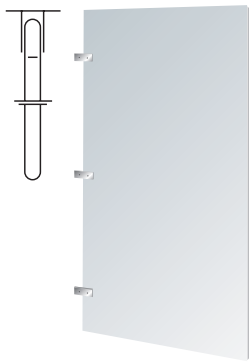


ALCOVE - RIGHT WITH BETWEEN WALL UNITS





# URINAL SCREENS, SHOWER & DRESSING ENCLOSURES



## TYPE "WH"

Available in:

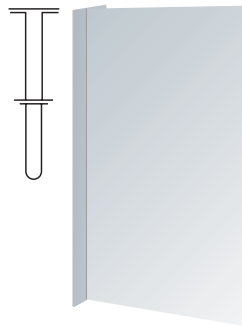
- Stainless Steel
- Powder Shield
- Plastic Laminate
- Solid Phenolic
- Polly® Solid Plastic

Measurements:

- 42" high (1,067mm)
- Depth
  - 12" (305mm)
  - 18" (457mm)
  - 24" (610mm)

Wall Hung Type Options:

- Full-height brackets



## TYPE "T"

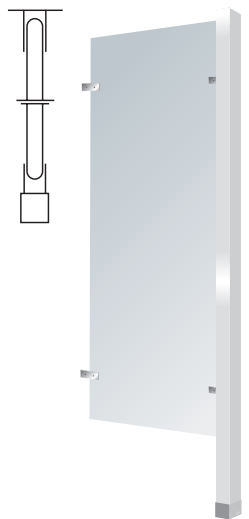
Available in:

- Stainless Steel
- Powder Shield

Measurements:

- 42" high (1,067mm)
- Depth
  - 18" (457mm)
  - 24" (610mm)
- Set 18" off floor (457mm)

Concealed wall plate mounting



## TYPE "PF"

Available in:

- Stainless Steel
- Powder Shield
- Plastic Laminate
- Solid Phenolic
- Polly® Solid Plastic

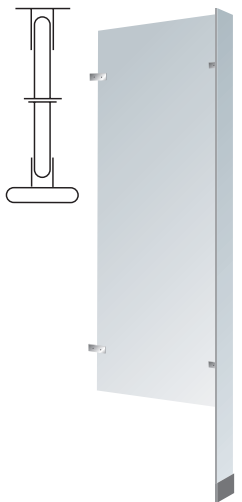
Measurements:

- 58" high (1,473mm)
- 55" high (1,397mm) for Polly®
- Depth
  - 18" (457mm)
  - 24" (610mm)
  - 30" (762mm)

1-3/4" (44mm) square aluminum tube

Floor Mounted Type Options:

- Floor-to-ceiling
- Full-height brackets



## TYPE "FT"

Available in:

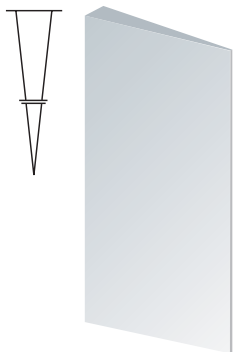
- Stainless Steel
- Powder Shield
- Plastic Laminate
- Solid Phenolic
- Polly® Solid Plastic

Measurements:

- 58" high (1,473mm)
- 55" high (1,397mm) for Polly®
- Depth
  - 18" (457mm)
  - 30" (762mm)
  - 36" (914mm)

Floor Mounted Pilaste Type Options:

- Floor-to-ceiling
- Full-height brackets



## TYPE "V"

Available in:

- Stainless Steel
- Powder Shield

Measurements:

- 30" high (762mm)
- Depth
  - 18" (457mm)
  - 24" (610mm)

Set 18" off floor (457mm)

Concealed wall plate mounting

## SHOWER & DRESSING ENCLOSURES



Shower and dressing enclosures are available in all materials except plastic laminate.

Receptors are precast terrazzo with integral cast drain and removable stainless steel strainer.

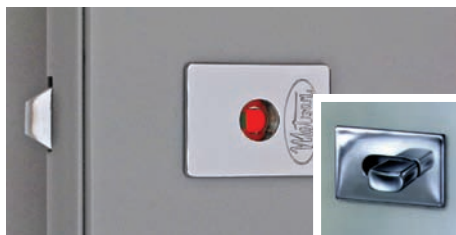
Includes heavy-duty, translucent vinyl curtain, integral curtain track, hooks, and soap dish.

MULTI-MATERIAL / MULTI-LAYOUT / MULTI-HARDWARE DESIGN FLEXIBILITY

## METPAR TAKES GREAT PRIDE IN THEIR STATE-OF-THE-ART CONSTRUCTION AND CRAFTSMANSHIP THAT GOES INTO EVERYTHING WE MAKE.

Striving to meet the changing needs of designers, architects, and builders has made Metpar the industry leader in the construction of toilet, shower, and dressing enclosures. Our experienced staff researches and tests materials for resistance to marring, vandalism, and corrosion to bring you our innovative, durable, and attractive line of partitions. We offer options for every structure, finishes for any decor, and strength to stand up to any type of wear and abuse. A vast array of colors and textures are available to heighten the atmosphere of any restroom.

Attention to detail distinguishes Metpar's dedication to uncompromising quality.



### INNOVATIVE INDICATORS

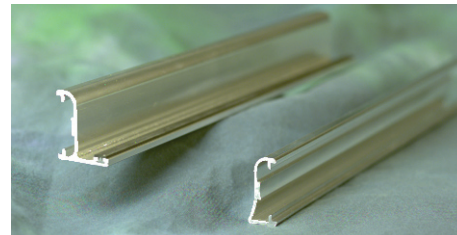
Inside, a concealed ADA slide latch. Outside, an "in-use" indicator that is exclusive to the Metpar line of toilet enclosures. Also available are surface-mounted latches with in-use indicators for use on any material.



### METPAR WEB SITE

[www.metpar.com](http://www.metpar.com)

Our web site gives you additional information regarding all of our products, including detailed drawings, specifications, schematics, and design ideas.



### EXTRUDED ALUMINUM PRIVACY STRIPS

Eliminates any sight gap on either side of the door.

- Available standard aluminum finish or optional powder coated colors
- Can be added to any Powder Shield or Stainless Steel partition configuration
- Can be added later or specified with new orders

These tough extruded aluminum strips can be added to existing Powder Shield (powder coated) partitions and Stainless Steel partition layouts, or can be ordered with new partitions. The latch side strip includes a full size rubber continuous stop, with a precentered concealed latch receiver slot. Counter-sunk pre-drilled holes are conveniently placed every 8", and attachment screws are included. The hinge side strip fits between the upper and lower standard hinges. The strips are added to the pilasters, allowing the door to remain standard. You can order your partitions with Metpar's privacy strips, or you can add it to existing layouts.



# HARDWARE AND BRACKETS

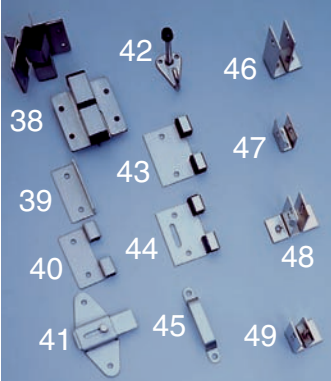
## POWDER SHIELD & STAINLESS STEEL



## PLASTIC LAMINATE



## PHENOLIC



## POLLY® SPR



Door and bracket hardware are available in a variety of materials, for the most economical choice or the most elegant one to suit all your installation needs.

Door hardware is available in die-cast (D.C.) chrome, stainless steel (S/S), investment cast stainless steel, and aluminum. The bracket hardware selection is anodized satin, bright aluminum, die-cast chrome, or stainless steel.

Figure No.	Computer No.	Description
1	13922	D.C. Chrome Top Hinge Bracket/Metal Doors
1	13931	S/S Top Hinge Bracket/Metal Doors
2	13920	D.C. Chrome Bottom Hinge Bracket/Metal Doors
2	13932	S/S Bottom Hinge Bracket/Metal Doors
3	13810	Top Hinge Pin-Metal
4	13882	Rectangular Concealed Latch
5	13896	Door Pull - 3-1/2" (89mm)
6	15811	Door Bumper
7	13902	Coat Hook & Bumper
8	13840	Strike and Keeper/Metal Doors
9	13818	Stay Set Cam
10	12360	1" (25.4mm) - 2 Ear Chrome Bracket
11	12330	1-1/4" (32mm) - 1 Ear Chrome Bracket
12	12410	1" (25.4mm) - U-Bracket Chrome
13	12380	1" (25.4mm) - 1 Ear Chrome Bracket
14	12300	Headrail to Wall Bracket
15	12251	Headrail to Pilaster Bracket
16	12450	Panel/Pilaster Alcove Clip
17	-----	2 Ear Plastic Bracket (Single Ear Also Available)
18	-----	Plastic Shoe
20	13940	D.C. Chrome Bottom Hinge Bracket/Plastic Laminate
20	13946	S/S Bottom Hinge Bracket/Plastic Laminate
21	13941	D.C. Chrome Top Hinge Bracket/Plastic Laminate
21	13947	S/S Top Hinge Bracket/Plastic Laminate
22	13884	Surface Mounted Latch - Chrome
23	13828	Top Hinge Pin - Plastic Laminate Door
24	13822	Top Hinge Insert - 7/8" (22mm) Plastic Laminate
25	13820	Bottom Hinge Insert - 7/8" (22mm) Plastic Laminate
26	13902	Coat Hook & Bumper
27	15811	Door Bumper
28A	13832	Pintle Assembly - 7/8" (22mm) Plastic Laminate
28B	13830	Cam - 7/8" (22mm) Plastic Laminate
29	13854	Strike & Keeper - In Swing Plastic Laminate
30	13852	Strike & Keeper - Out Swing Plastic Laminate
31	13848	Flat Strike & Keeper - In Swing
32	13896	Door Pull - 3-1/2" (89mm)
33	12460	Panel/Pilaster Offset Alcove Clips
34	12400	7/8" (22mm) - U-Bracket - Chrome
35	12350	7/8" (22mm) - 2 Ear Chrome Bracket
36	12370	7/8" (22mm) - 1 Ear Chrome Bracket
37	12330	1-1/4" (32mm) - 1 Ear Chrome Bracket
38	13948	S/S Hinges R/H I/S
	13949	S/S Hinges L/H I/S
39	13865	S/S Keeper
40	13863	S/S Strike
41	13911	S/S Latch
42	13914	S/S Hook/Bumper
43	13866	S/S Flat Strike (Out Swing)
44	13864C	S/S Flat Strike (In Swing)
45	13912	S/S Door Pull
46	12620	3/4" (19mm) - 1 Ear Bracket/S/S
47	12651	1/2" (13mm) - U-Bracket/S/S
48	12550	1/2" (13mm) - 2 Ear Bracket/S/S
49	12580	1/2" (13mm) - 1 Ear Bracket/S/S
50	13038	Nylon Cam Assembly
51	13899	Aluminum Surface Latch
51A	13985 (RH)	8" Aluminum Hinge
51B	13986 (LH)	8" Aluminum Hinge
51C	13869	Aluminum Outswing Strike & keeper
51D	13870	Aluminum Inswing Strike & keeper
52	13313	L-Bracket/Continuous/Aluminum
53	13314	1" (25.4mm) - U-Bracket/Continuous/Aluminum
54	12192	1" (25.4mm) - 1 Ear Bracket/Continuous/Aluminum
55	12172	1" (25.4mm) - 2 Ear Bracket/Continuous/Aluminum
56	12602	1" (25.4mm) - 1 Ear Bracket/Continuous/S/S
57	12572	1" (25.4mm) - 2 Ear Bracket/Continuous/S/S
58	Varies	Full-length 54" (1,372mm) and 57" (1,448mm) S/S Multi-Cam® Hinge



95 State Street, P.O. Box 1873, Westbury, NY 11590  
 PHONE: (516) 333-2600 FAX: (516) 333-2618 E-MAIL: Sales@metpar.com

[www.metpar.com](http://www.metpar.com)