



EL & EL Wood Products

Millwork that creates distinction.™

THE 2018
BLACK BOOK
OF MOULDING

**INTERIOR / EXTERIOR
MOULDING POCKET GUIDE**

MDF | FJ PINE | HARDWOODS | SOLID PINE
VG DOUG FIR | REDWOOD | BODYGUARD®

THE 2018 **BLACK BOOK** OF MOULDING

You'd be lost without it.

This little black book is your own pocket guidebook to mouldings — all the details you need in one place to ensure that every job you do is better than the last.



EL & EL Wood Products

Millwork that creates distinction.™

ELandELWoodProducts.com

Go Green

EL & EL supports responsible forest management for all of our products. Many of the products that we distribute, qualify to earn LEED points for Green Building Products. By acquiring our FSC® Chain of Custody Certification (FSC-C010058), we are doing our part to ensure that our natural resources will be protected for future generations.

FSC is the most recognized green certifier in America, however, there are many green products that are not FSC certified, yet meet similar requirements and specifications for responsible forestry management.

Ask an EL & EL sales representative about available FSC certified products.



**The mark of
responsible forestry**

General Disclaimer

Shapes and sizes listed are typical only and are subject to change without notice. Delivered sizes may vary by $\pm 1/16$ " depending on various conditions including, but not limited to: variances in mill production, condition of milling knives, human error, and/or specification changes/adjustments by EL & EL between printed publication dates.

If exacting specifications are crucial to your project, please contact an EL & EL sales representative to discuss your needs. We will work with you to deliver the results you desire.



TABLE OF CONTENTS

Legend.....	4
Casing.....	5
Door Header Casing/Cap.....	19
Base Shoe Corner.....	20
Base.....	21
Stop.....	39
Crown & Cornice.....	40
Dentil Lineal.....	55
Chair Rail.....	56
Handrail.....	58
Apron.....	59
Panel Mould.....	60
Panel Cap.....	62
Bead/Screen Moulds.....	65
Astragal.....	66
Mull Posts & Cover.....	68
Nose & Cove.....	68
Window Stool.....	70
Hook & Cleat.....	72
Closet Accessories.....	73
Shelving.....	74
Wall Cap.....	75
Dowels / Dowel Pins / Screwhole Plugs.....	75
Quarter / Half / Full Rounds.....	76
Lattice.....	76
Outside Corner Guard.....	77
Half / Full Round Rope.....	77
T&G Wainscot.....	78
Exterior Moulds.....	80
Bodyguard® Exterior Moulds.....	82
Bodyguard® Exterior Siding.....	83
Protected Exterior Trim.....	84
T-Mould / Reducer / Threshold.....	85
Exterior Sill.....	86
Interior / Exterior Trimboard.....	87
Exterior Sill.....	87
Pakari™ Thermally Modified Lumber.....	87
Interior S4S.....	88
Interior Door Jambs.....	90
Standard Exterior Door Jambs/Frames.....	92
Exterior Door Frames with Weatherstrip Kerf.....	94
Jamb Extension / Kerf Strips.....	96
Q-Lon® Weatherstripping.....	96
Furring Strips / Flashing / Sealant / Shims / Twine.....	97
Colonial Base Corners / Raw Round Corner.....	97
Plinth & Base Blocks.....	98
Majestic Mantels™ & Surround Kits.....	100
Bullnose Base Corners.....	100
ValuFlex™ Flexible Moulding.....	101
Simple Solutions™ Miterless Crown Corners.....	101
HB&G™ Columns & Porch Systems.....	102
Fypon® Polyurethane.....	103
White River™ Embossed & Mon Reale Mouldings.....	104



LEGEND

SPECIES	LENGTHS	
	CASING	BASE/CROWN/OTHER
MUL = Ultralight MDF (Ultralight Fiberboard)	7", 8", 16", 17"	16'
LDF = Lightweight MDF (Light Density Fiberboard)	7", 16", 17"	16'
PR__FJ = Primed FJ Pine	7", 17'	16' + Trimbacks
FJ = Unprimed FJ Pine	7", 17'	16' + Trimbacks
ALL PROFILES		
SP = Solid Pine	7'-16'	
VG = Vertical Grain Doug fir	6'-20'	
F = Mixed Grain Douglas Fir	6'-20'	
R = Redwood	6'-16'	
O = Red Oak	6'-16'	
QWO = Quarter Sawn White Oak	6'-10'	
P = Poplar	6'-16'	
ALD or SA = Superior Alder	6'-10'	
KA = Knotty Alder	6'-10'	
C = Cherry	6'-16'	
MH = Mahogany	6'-16'	
SMH = Sapele Mahogany	6'-16'	
MP = Maple	6'-16'	
WL = Walnut	6'-10'	
FB = Fiberboard	16'	
PB = Particle Board	8', 16'	
PR__LVL = Primed Laminated Veneer Lumber (LVL)	16'	
PAK = Pakari™ Thermally Modified Lumber	8'-16'	

*LENGTHS VARY PER PROFILE

NOTE: Hardwood mouldings are generally available in lengths 12' and shorter. Please check availability for lengths longer than 12'.

EXTERIOR USE:
Items with this symbol are for exterior use

PRE-MITERED CASING:
Available in 7" mitered pairs or sets

NEW ITEM:
Items with this symbol are new for 2017-2018

How to Use the Little Black Book

All items are separated into their respective categories (e.g. Casing, Base, Crown). Within each category, items are ordered by size from smallest to largest. For example, if you are looking for a 7-1/4" base, go to the Base section, find the 7-1/4" size, and all 7-1/4" profiles will be found together.



Part Description → **1 Eased Edge Craftsman Base**
 Size → **7/16 x 3-1/2**
 Part# → **387MUL-3** Ultralight MDF N/S
 Old Part# & Location → Formerly **388MUL-3** ▼
 Species → **PR387FJ-3** Primed FJ Pine N/S
 In-Stock Location →

Each item is listed with an in-stock status designation, showing standard stocking by EL & EL location at the time of printing. An 'S' denotes the part is in-stock at our Southern California facility, an 'N' denotes the item is in-stock at our Northern California facility, and an 'N/S' denotes the item is in-stock at both facilities.

For your convenience, older part numbers are shown just below the current part number.



Back Band Lips 5/8" Casing

11/16 x 1

PR193FJ Primed FJ Pine N



Back Band Lips 9/16" Casing

11/16 x 1-1/8

190SP Solid Pine S



Back Band Lips 5/8" Casing

1-1/8 x 1-1/4

PR192FJ Primed FJ Pine N



Pre-Fit Casing

9/16 x 1-1/2

151FJ FJ Pine S



Oval/Streamline Casing

1/2 x 1-1/2

104SP Solid Pine S

5/8 x 1-5/8

105SP Solid Pine N/S



2 Round Edge Casing

9/16 x 1-5/8

PR100FJ Primed FJ Pine N/S

100SP Solid Pine N



Beveled/Streamline Casing

9/16 x 1-9/16

102MUL Ultralight MDF N/S

1/2 x 1-5/8

101SP Solid Pine S

101FJ FJ Pine S

9/16 x 1-5/8

102B-0 Oak N

Formerly 102-0 ▲

5/8 x 1-5/8

PR102FJ Primed FJ Pine (M) N/S

102FJ FJ Pine (M) N/S

102SP Solid Pine N/S

102-0 Oak S



#711 Casing

1/2 x 1-9/16

107-0 Oak S

9/16 x 1-5/8

107MUL Ultralight MDF N/S

5/8 x 1-5/8

PR107FJ Primed FJ Pine (M) S

107FJ FJ Pine S

107SP Solid Pine S



3-Step Casing

5/8 x 1-5/8

109SP Solid Pine N/S



Bead & Barrel Casing

1/2 x 1-5/8

111SP Solid Pine S



4-Bead Casing

1/2 x 1-5/8

112SP Solid Pine S

CASING

**#1550 Casing**

1/2 x 1-5/8

113SP	Solid Pine	S
-------	------------	---

**Moulded Casing**

5/8 x 1-5/8

130MUL	Ultralight MDF	N/S
PR130FJ	Primed FJ Pine	N
130SP	Solid Pine	N
130-O	Oak	N
130P	Poplar	N

**Oval Casing**

9/16 x 1-5/8

PR142FJ	Primed FJ Pine	N
142SP	Solid Pine	N

**#356 Moulded Casing**

5/8 x 1-5/8

PR152FJ-1	Primed FJ Pine	N
-----------	----------------	---

**Clamshell Casing**

9/16 x 2

121MUL	Ultralight MDF	(M) S
5/8 x 2		
121SP	Solid Pine	S
11/16 x 2		
121FJ	FJ Pine	S

**#356 Casing**

9/16 x 2

153FJ	FJ Pine	S
-------	---------	---

**Malibu Casing**

7/8 x 2

179-O	Oak	S
179P	Poplar	S
179ALD	Alder	S
179C	Cherry	S
179MH	Mahogany	S
179MP	Maple	S

**Oval/Streamline Casing**

5/8 x 2-1/4

106BSP	Solid Pine	N
Formerly 106SP ▲		

**3-Step Casing**

5/8 x 2-1/4

PR110BFJ-2	Primed FJ Pine	N/S
Formerly PR110FJ ▲		
110BSP	Solid Pine	N
Formerly 110SP ▲		

**Monterey/
Colorado Casing**

9/16 x 2-1/4

135MUL-2	Ultralight MDF	N/S
Formerly 123MUL ▼		

**Moulded Casing**

5/8 x 2-1/4

PR141FJ	Primed FJ Pine	N
141SP	Solid Pine	N
141-O	Oak	N
141P	Poplar	N
141VG	VG Doug Fir	N

**Oval Casing**

9/16 x 2-1/4

PR143FJ	Primed FJ Pine	N
143SP	Solid Pine	N



CASING



Classic Beaded Casing

11/16 x 2-1/4

NEW

146MUL-2	Ultralight MDF	N/S
PR146FJ-2	Primed FJ Pine	N/S



Meridian Casing

11/16 x 2-1/4

NEW

149MUL-2	Ultralight MDF	N/S
5/8 x 2-1/4		
PR149FJ-2	Primed FJ Pine	N/S



Colonial/#356 Casing

9/16 x 2-1/4

152-0	Oak	N/S
5/8 x 2-1/4		

152MUL	Ultralight MDF	(M) N/S
11/16 x 2-1/4		

152BMUL	Ultralight MDF	(M) N/S
PR152FJ	Primed FJ Pine	(M) N/S
152FJ	FJ Pine	(M) N/S
152SP	Solid Pine	N/S
152VG	VG Doug Fir	N/S
152B-0	Oak	N/S
152P	Poplar	N/S
152ALD	Alder	N
152KA	Knotty Alder	N
152C	Cherry	N
152MH	Mahogany	N
152MP	Maple	N



Reversible 4-Flute & Reed Casing

9/16 x 2-1/4

158MUL-2	Ultralight MDF	N/S
11/16 x 2-1/4		

PR158FJ-2	Primed FJ Pine	N
------------------	----------------	---



#366 Casing

5/8 x 2-1/4

162MUL-2	Ultralight MDF	S
Formerly 162MUL ▼		



Anderson/#366 Casing

5/8 x 2-1/4

PR162FJ	Primed FJ Pine	N
162FJ	FJ Pine	S

11/16 x 2-1/2

162BFJ	FJ Pine	S
Formerly 162B ▼		



Tucson Casing

11/16 x 2-1/4

194MUL	Ultralight MDF	S
Formerly 104MUL ▼		



Clamshell Casing

9/16 x 2-1/4

195MUL	Ultralight MDF	S
Formerly 105MUL ▼		



Peoria Casing

9/16 x 2-1/4

196MUL	Ultralight MDF	S
Formerly 106MUL ▼		



Beveled/Streamline Casing

9/16 x 2-1/4

103MUL	Ultralight MDF	N/S
5/8 x 2-1/4		

PR103BFJ	Primed FJ Pine	(M) N/S
Formerly PR103FJ ▲		

103BFJ	FJ Pine	(M) N
Formerly 103FJ ▲		

103BSP	Solid Pine	N
103-0	Oak	N

5/8 x 2-1/2

103SP	Solid Pine	S
--------------	------------	---

11/16 x 2-1/2

103FJ	FJ Pine	S
--------------	---------	---

**#711 Casing**

5/8 x 2-3/8

108-0	Oak	S
108P	Poplar	S
108ALD	Alder	S
108MH	Mahogany	S

5/8 x 2-1/2

108MUL	Ultralight MDF	(M) N/S
PR108FJ	Primed FJ Pine	S
108FJ	FJ Pine	S
108SP	Solid Pine	S
108VG	VG Doug Fir	S

**Mission/Bel-Air Casing**

5/8 x 2-7/16

PR128FJ	Primed FJ Pine	N/S
128FJ	FJ Pine	S

11/16 x 2-1/2

128MUL	Ultralight MDF	N/S
128-0	Oak	N/S
128P	Poplar	N/S
128ALD	Alder	N/S
128KA	Knotty Alder	N
128C	Cherry	N/S
128MH	Mahogany	N/S
128MP	Maple	N/S

**Carolina/Palisade Casing**

11/16 x 2-7/16

132MUL	Ultralight MDF	N/S
PR132FJ	Primed FJ Pine	N/S
<i>Formerly PR182A ▼</i>		

11/16 x 2-1/2

132P	Poplar	N
132ALD	Alder	N/S
<i>Formerly 182ALD ▼</i>		

**Carmel Casing**

11/16 x 2-7/16

PR137FJ	Primed FJ Pine	N/S
----------------	----------------	-----

5/8 x 2-1/2

137MUL	Ultralight MDF	N/S
---------------	----------------	-----

**2 Round Edge Casing**

9/16 x 2-1/4

PR120FJ	Primed FJ Pine	N/S
120FJ	FJ Pine	N
120BSP	Solid Pine	N
<i>Formerly 120SP ▲</i>		

120VG VG Doug Fir N/S

5/8 x 2-1/4

120MUL	Ultralight MDF	N/S
---------------	----------------	-----

5/8 x 2-1/2

120SP	Solid Pine	S
--------------	------------	---

11/16 x 2-1/2

PR120BFJ	Primed FJ Pine	(NEW) N/S
-----------------	----------------	------------------

PR120BFJ	FJ Pine	N/S
-----------------	---------	-----

Formerly PR122FJ ▲

13/16 x 2-1/2

120-0	Oak	N/S
120P	Poplar	N/S
120ALD	Alder	N/S
120KA	Knotty Alder	N
120C	Cherry	N/S
120MH	Mahogany	N/S
120MP	Maple	N/S

**Santa Fe/#275 Casing**

11/16 x 2-7/16

167MUL	Ultralight MDF	N/S
PR167FJ	Primed FJ Pine	N/S
<i>Formerly PR124A ▼</i>		

167FJ	FJ Pine	S
<i>Formerly 124FJ ▼</i>		

13/16 x 2-7/16

167-0	Oak	N
167P	Poplar	N/S
<i>Formerly 183P ▼</i>		

167ALD Alder N**167C** Cherry N/S*Formerly 183C ▼***167MH** Mahogany N/S*Formerly 183MH ▼***167MP** Maple N/S*Formerly 183MP ▼*



CASING



Howe Casing

11/16 x 2-7/16

178MUL	Ultralight MDF	N/S
3/4 x 2-1/2		

178P	Poplar	N/S
<i>Formerly 176P ▼</i>		

13/16 x 2-1/2

178ALD	Alder	N
178C	Cherry	N
178MH	Mahogany	N
178MP	Maple	N



Oval/Streamline Casing

5/8 x 2-1/2

106SP	Solid Pine	S
--------------	------------	---



3-Step Casing

5/8 x 2-1/2

110MUL	Ultralight MDF	N/S
110FJ-2	FJ Pine	S
<i>Formerly 110A ▲</i>		
110SP	Solid Pine	S



Universal Casing

5/8 x 2-7/16

115-0	Oak	S
115FJ	FJ Pine	S
115SP	Solid Pine	S



Colonial Casing

11/16 x 2-1/2

116SP	Solid Pine	S
--------------	------------	---



7-Bead Casing

5/8 x 2-1/2

122SP	Solid Pine	S
--------------	------------	---



Riviera Casing

5/8 x 2-1/2

131MUL	Ultralight MDF	N/S
131-0	Oak	N
11/16 x 2-1/2		
PR131FJ	Primed FJ Pine	(M) N/S
131SP	Solid Pine	N



Bay Shore/Bayport Casing

5/8 x 2-1/2

134MUL	Ultralight MDF	N/S
---------------	----------------	-----



Mackenzie Casing

5/8 x 2-1/2

138MUL	Ultralight MDF	N/S
---------------	----------------	-----



Cape Cod Casing

5/8 x 2-1/2

150MUL	Ultralight MDF	N/S
PR150FJ	Primed FJ Pine	N/S
150FJ	FJ Pine	S
150SP	Solid Pine	N/S
11/16 x 2-1/2		
150-0	Oak	N/S
150P	Poplar	N/S
150ALD	Alder	S
150C	Cherry	N/S
150MH	Mahogany	N/S
150MP	Maple	N/S

**Bel-Air/Coronado Casing**

1-3/16 x 2-1/2

157MUL Ultralight MDF N/S

1-1/4 x 2-1/2

PR157FJ Primed FJ Pine S

157FJ FJ Pine S

**Lancaster/
Hermosa Casing**

1 x 2-1/2

159MUL Ultralight MDF N/S

PR159FJ Primed FJ Pine S

159FJ FJ Pine S

159P Poplar S

**Monterey Casing**

5/8 x 2-1/2

PR163FJ Primed FJ Pine S

163FJ FJ Pine S

**Bell Court Casing**

1-3/16 x 2-1/2

164MUL Ultralight MDF S

1-1/4 x 2-1/2

164FJ FJ Pine S

**Santa Clara/
Crescent Casing**

11/16 x 2-1/2

168-0 Oak S

168P Poplar S

3/4 x 2-5/8

168MUL Ultralight MDF N/S

**Victorian/Tudor Casing**

5/8 x 2-1/2

169-0 Oak S

11/16 x 2-1/2

169MUL Ultralight MDF N/S

PR169FJ Primed FJ Pine N/S

169FJ FJ Pine S

169SP Solid Pine N

3/4 x 2-1/2

169B-0 Oak N

Formerly 169-0 ▲

**Contemporary Casing**

11/16 x 2-1/4

172MUL-2 Ultralight MDF N/S

11/16 x 2-1/2 **NEW**

PR172FJ-2 Primed FJ Pine N/S

**Sierra Casing**

5/8 x 2-1/2

PR175FJ-2 Primed FJ Pine N/S

**S4S Notched
Modern Casing**

11/16 x 2-1/2

197MUL Ultralight MDF N/S

**Ogee Casing**

11/16 x 2-1/2

198MUL Ultralight MDF N/S

**Malibu Casing**

1 x 2-9/16

181MUL Ultralight MDF S



CASING



Montecito Casing

5/8 x 2-9/16

PR123FJ Primed FJ Pine S



Coronado Casing/ Chair Rail

5/8 x 2-5/8

145SP Solid Pine N



2 Round Edge Casing

9/16 x 2-3/4

122MUL-SC Ultralight MDF N/S

3/4 x 2-3/4

122MUL Ultralight MDF N/S



Palos Verde Casing

1-3/16 x 2-7/8

147FJ FJ Pine S

Formerly 167A ▼



Solano/Colonial Casing

11/16 x 2-7/8

119MUL Ultralight MDF N/S

PR119FJ Primed FJ Pine N/S

119FJ FJ Pine S

119SP Solid Pine S

119-0 Oak S

119P Poplar S



Victorian/Newport Casing

11/16 x 2-7/8

125MUL Ultralight MDF N/S

125-0 Oak N/S

125P Poplar N/S

125ALD Alder N/S

125KA Knotty Alder S

125C Cherry N/S

125MH Mahogany N/S

125MP Maple N/S



Del Mar/New Hampshire Casing

5/8 x 3

127MUL Ultralight MDF N/S



Monterey/ Colorado Casing

11/16 x 3

135MUL-3SC Ultralight MDF S

Formerly 124MUL ▼



Santa Fe/#275 Casing

5/8 x 3

PR165FJ Primed FJ Pine **NEW** S

165FJ FJ Pine S

11/16 x 3

165MUL Ultralight MDF N/S



Howe Casing

11/16 x 3

PR177BFJ Primed FJ Pine S

Formerly PR177A ▼

**Colonial/#356 Casing**

5/8 x 3-1/8

176LDF Light Density LDF N

9/16 x 3-1/4

176MUL-SC Ultralight MDF S

11/16 x 3-1/4

176MUL Ultralight MDF N/S**176P** Poplar N**176ALD** Alder N**176KA** Knotty Alder N**176C** Cherry N**176MH** Mahogany N**176MP** Maple N**Piedmont Casing**

13/16 x 3-3/16

PR148FJ Primed FJ Pine N

Formerly PR121FJ ▲

**3-Step Casing**

5/8 x 3-1/4

PR110FJ-3 Primed FJ Pine N/S**2 Eased Edge Mullion Casing**

5/16 x 3-1/4

114-03 Oak S**114SMH-3** Sapele Mahogany N/S**114QWO-3** Qtr. Sawn White Oak N/S**114VG-3** VG Fir N/S**114WL-3** Walnut N/S

1/4 x 3-1/2

114SP Solid Pine S**4-Reed Casing**

3/4 x 3-1/4

CA326-0 Oak S**CA326P** Poplar N/S**Mission/Bel-Air Casing**

5/8 x 3-1/4

PR129FJ Primed FJ Pine N/S

3/4 x 3-1/4

129MUL Ultralight MDF N/S**129-0** Oak N/S**129P** Poplar N/S**129ALD** Alder N/S**129KA** Knotty Alder N/S**129C** Cherry N/S**129MH** Mahogany N/S**129MP** Maple N/S**Monterey/Colorado Casing**

11/16 x 3-1/4

135MUL-3 Ultralight MDF N/S

Formerly 135MUL ▲▼

PR135FJ Primed FJ Pine N/S**135ALD** Alder N**135KA** Knotty Alder N**4-Flute Casing**

9/16 x 3-1/4

154MUL Ultralight MDF S

Formerly 109MUL ▼

**3-Fluted Casing**

1/2 x 3-1/4

154FJ FJ Pine S**Cape Cod Casing**

11/16 x 3-1/4

155BSP Solid Pine N

NEW



**Lancaster/
Hermosa Casing**

1-1/8 x 3-1/4

160-0	Oak	N/S
160P	Poplar	N/S
160ALD	Alder	S
160KA	KnottyAlder	S
160C	Cherry	N/S
160MH	Mahogany	N/S
160MP	Maple	N/S
1-3/16 x 3-1/4		
160MUL	UltralightMDF	N/S
1-1/4 x 3-1/4		
160FJ	FJPine	S



Cambridge Casing

5/8 x 3-1/4

161FJ	FJPine	S
11/16 x 3-1/4		
161MUL	UltralightMDF	S
161-0	Oak	S



#366 Casing

5/8 x 3-1/4

162MUL-3	UltralightMDF	S
----------	---------------	---

Formerly 163MUL ▼



#366 Casing

11/16 x 3-1/4

162FJ-3	FJPine	S
---------	--------	---

Formerly 168A ▼



Victorian/Tudor Casing

1 x 3-1/4

170MUL	UltralightMDF	N/S
PR170FJ	PrimedFJPine	S
170FJ	FJPine	S



Contemporary Casing

11/16 x 3-1/4

172VG-3	VG Doug Fir	N/S
---------	-------------	-----



Moulded Casing

5/8 x 3-1/4

PR176FJ	PrimedFJPine	N/S
176FJ	FJPine	N
176SP	SolidPine	N/S
176VG	VG Doug Fir	N/S
11/16 x 3-1/4		
176-0	Oak	N



Howe Casing

1-1/16 x 3-1/4

PR177FJ	PrimedFJPine	N
387	 Bodyguard	N/S



Carmel Casing

5/8 x 3-1/4

184MUL	UltralightMDF	N/S
--------	---------------	-----



49er Casing

1 x 3-1/4

186MUL	UltralightMDF	N/S
PR186FJ	PrimedFJPine	N
186SP	SolidPine	N
186P	Poplar	N
186-0	Oak	N
186ALD	Alder	N
186C	Cherry	N
186MH	Mahogany	N
186MP	Maple	N

CASING

**Malibu Casing**

1-3/16 x 3-3/8

180MUL Ultralight MDF N/S

1-3/8 x 3-3/8

180P Poplar N/S**Belmont/Crescent Casing**

11/16 x 3-1/4

126FJ FJ Pine S

11/16 x 3-1/2

126MUL-SC Ultralight MDF S

3/4 x 3-1/2

126-O Oak S**126P** Poplar S**Carolina/Palisade Casing**

11/16 x 3-1/4

133MUL Ultralight MDF N/S**PR133FJ** Primed FJ Pine N/S**388**  Bodyguard N/S

3/4 x 3-1/2

133-O Oak N**133P** Poplar N**133C** Cherry N**133MH** Mahogany N**133MP** Maple N

7/8 x 3-1/2

133ALD Alder N**Reversible 5-Flute & Reed Casing**

11/16 x 3-1/4

PR158FJ-3 Primed FJ Pine N

9/16 x 3-3/8

158MUL-3 Ultralight MDF N/S

3/4 x 3-1/2

158-O Oak N/S**158P** Poplar N/S**158ALD** Alder N/S**158C** Cherry N/S**158MH** Mahogany N/S**158MP** Maple N/S**2 Round Edge Casing**

9/16 x 3-1/4

139MUL-SC Ultralight MDF N/S**PR139FJ** Primed FJ Pine N/S**139SP** Solid Pine N/SZ

11/16 x 3-1/4

139MUL Ultralight MDF N/S

13/16 x 3-1/4

139-O Oak N/S**139P** Poplar N/S**139ALD** Alder N/S**139KA** Knotty Alder N/S**139C** Cherry N/S**139MH** Mahogany N/S**139MP** Maple N/S

11/16 x 3-1/2

139VG VG Doug Fir N/S

13/16 x 3-1/2

PR139BFJ Primed FJ Pine N/S**Santa Fe/#275 Casing**

1-1/16 x 3-3/8

PR166FJ Primed FJ Pine N/S

1 x 3-1/2

166MUL Ultralight MDF N/S**166ALD** Alder N**166KA** Knotty Alder N

1-1/16 x 3-1/2

166P Poplar N**166C** Cherry N**166MH** Mahogany N**166MP** Maple N**Classic Beaded Casing**

7/8 x 3-7/16

NEW**146MUL-3** Ultralight MDF N/S**PR146FJ-3** Primed FJ Pine N/S**Sierra Casing**

11/16 x 3-7/16

PR175FJ-3 Primed FJ Pine N/S



CASING



Meridian Casing

7/8 x 3-7/16

NEW

149MUL-3	Ultralight MDF	N/S
PR149FJ-3	Primed FJ Pine	N/S



Shasta Casing

5/8 x 3-7/16

PR156FJ	Primed FJ Pine	N
---------	----------------	---

7/8 x 3-1/2

156MUL	Ultralight MDF	N/S
--------	----------------	-----

11/16 x 3-1/2

156VG	VG Doug Fir	N
-------	-------------	---



Colonial Base/Casing

9/16 x 3-1/2

117FJ	FJ Pine	S
117SP	Solid Pine	S



Belmont/Crescent Casing

1 x 3-1/2

126MUL	Ultralight MDF	N/S
--------	----------------	-----



Crescent Casing

1 x 3-1/2

138FJ	FJ Pine	S
-------	---------	---

Formerly 166A ▼



Savannah Casing

1-3/16 x 3-1/2

147MUL	Ultralight MDF	S
--------	----------------	---



Cape Cod Casing

11/16 x 3-1/2

155MUL	Ultralight MDF	N/S
155FJ	FJ Pine	S
155SP	Solid Pine	S
155-O	Oak	S
155P	Poplar	N/S
155ALD	Alder	S



Colonial/Chesapeake Casing

11/16 x 3-1/2

156FJ	FJ Pine	S
156-O	Oak	S



5-Flute Casing

1/2 x 3-1/2

158FJ-3	FJ Pine	S
---------	---------	---

Formerly 158A ▼



Santa Fe/#275 Casing

1-1/16 x 3-1/2

165P	Poplar	S
165ALD	Alder	S
165KA	Knotty Alder	S
165C	Cherry	S
165MH	Mahogany	S
165MP	Maple	S



Contemporary Casing

11/16 x 3-1/2

NEW

172MUL-3	Ultralight MDF	N/S
PR172FJ-3	Primed FJ Pine	N/S



Colonial Base/Casing

9/16 x 3-1/2

118MUL-3	Ultralight MDF	S
PR118FJ-3	Primed FJ Pine	S

**Tuscany Casing**

13/16 x 3-1/2

CA364P Poplar S**Crescent Casing**

1-3/16 x 3-1/2

173MUL Ultralight MDF S**Howe Casing**

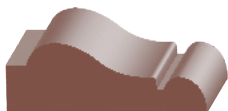
1 x 3-1/2

177MUL Ultralight MDF N/S**177P** Poplar N/S**177ALD** Alder N**177KA** Knotty Alder N**177C** Cherry N**177MH** Mahogany N**177MP** Maple N**Shasta Casing**

11/16 x 3-1/2

179MUL Ultralight MDF N/S**Palisade Casing**

7/8 x 3-1/2

185ALD Alder S**Bel-Air Casing**

1-3/16 x 3-1/2

189MUL Ultralight MDF N/S**Chandler Casing**

15/16 x 3-1/4

191MUL Ultralight MDF S**Intrada Casing**

11/16 x 3

192MUL Ultralight MDF N/S**Valley Casing**

11/16 x 3-1/2

PR198FJ Primed FJ Pine N**Carolina/Palisade Casing**

11/16 x 3-9/16

PR133BFJ Primed FJ Pine S

Formerly PR185A ▼

**Georgian Casing**

11/16 x 3-9/16

183MUL Ultralight MDF N/S**Sierra/Tuscany Casing**

7/8 x 3-3/4

175MUL Ultralight MDF N/S**175C** Cherry S**175MH** Mahogany S**175MP** Maple S

13/16 x 3-3/4

175-0 Oak N/S

(profiles shown approximate scale)

▲ = NorCal (N) | ▼ = SoCal (S)



CASING



Bullhead Casing

11/16 x 4

193MUL Ultralight MDF S



2 Eased Edge Craftsman Casing

11/16 x 4

PR199FJ Primed FJ Pine N/S

Formerly PR186A ▼

3/4 x 4

199ALD Alder N/S

Formerly 186ALD ▼

199KA Knotty Alder N/S



Fancy 4-Flute Casing

3/4 x 4

CA327P Poplar N/S



Howe Casing

1-1/8 x 4-1/8

174MUL Ultralight MDF N/S

1-1/16 x 4-1/8

174P Poplar N/S

Formerly 178P ▼



Monterey/Colorado Casing

13/16 x 4-1/4

136MUL Ultralight MDF N/S

PR136FJ Primed FJ Pine N/S

136ALD Alder N



Williamsburg Casing

1-3/16 x 4-1/4

143MUL Ultralight MDF S



Classic Beaded Casing

7/8 x 4-1/4

NEW

146MUL-4 Ultralight MDF N/S

PR146FJ-4 Primed FJ Pine N/S



Malibu Casing

1-3/16 x 4-1/4

148MUL Ultralight MDF S



Meridian Casing

7/8 x 4-1/4

NEW

149MUL-4 Ultralight MDF N/S



Colonial Base/Casing

1/2 x 4-1/4

118-04 Oak S

Formerly 118-0 ▼

118P-4 Poplar S

Formerly 118P ▼

9/16 x 4-1/4

118MUL-4 Ultralight MDF S

PR118FJ-4 Primed FJ Pine S

Formerly PR118A ▼

118FJ-4 FJ Pine S

Formerly 118A ▼

118SP-4 Solid Pine S

Formerly E118 ▼

Solano Base/Casing

9/16 x 4-1/4

362MUL-4 Ultralight MDF N

PR362FJ-4 Primed FJ Pine N

**Reversible 6-Flute & Reed Casing**

11/16 x 4-1/4

158MUL-4	Ultralight MDF	N/S
PR158FJ-4	Primed FJ Pine	N

**Victorian Casing/Chair Rail**

11/16 x 4-1/4

184-0	Oak	S
--------------	-----	---

**Architrave**

1-3/16 x 4-1/4

1400	Bodyguard	N/S
-------------	-----------	-----

**Tuscany Casing**

7/8 x 4-1/4

140MUL	Ultralight MDF	N/S
140-0	Oak	N
140P	Poplar	N/S

7/8 x 4-1/2

140VG	VG Doug Fir	N
--------------	-------------	---

**2 Round Edge Craftsman Casing**

3/4 x 4-1/2

145MUL	Ultralight MDF	N/S
---------------	----------------	-----

**Reversible 8-Flute & Reed Casing**

9/16 x 5-1/2

158MUL-5	Ultralight MDF	S
Formerly 171MUL ▼		

3/4 x 5-1/2

171P	Poplar	S
-------------	--------	---

**4-Flute Casing**

1/2 x 5-1/2

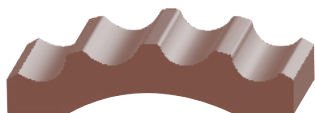
173FJ	FJ Pine	S
Formerly 172A ▼		



CASING

CASING

DOOR HEADER



Fluted Radial Casing

1-1/4 x 5

191P Poplar S



2 Eased Edge Mullion Casing

5/16 x 5-1/2

NEW

114VG-5	VG Fir	N/S
114QW0-5	Qtr. Sawn White Oak	N/S
114SMH-5	Sapele Mahogany	N/S
114WL-5	Walnut	N/S

DOOR HEADER



1 Round Edge Craftsman Header

1-1/16 x 5-1/2

144MUL Ultralight MDF N/S



2 Eased Edge Door Header Fillet

7/16 x 1-1/4

PR969FJ	Primed FJ Pine	N/S
11/16 x 1-1/4		
970LDF	Light Density LDF	N/S
PR970FJ	Primed FJ Pine	N/S
970P	Poplar	N
970ALD	Alder	N



Craftsman Door Header Cap

1-5/16 x 2-1/4

PRHC150FJ	Primed FJ Pine	N/S
<i>Formerly PRDH150A ▼</i>		
HC150VG	VG Doug Fir	N/S
HC150ALD	Alder	N/S
<i>Formerly DH150ALD ▼</i>		



Door Header Cap

1-3/4 x 2-1/4

HC150-0	Oak	S
<i>Formerly TC150-0 ▼</i>		
HC150P	Poplar	N/S
<i>Formerly TC150P ▼</i>		



Door Header Casing

1-1/16 x 5-1/4

DH190-0	Oak	S
DH190P	Poplar	N/S

**BASE SHOE & ROUND CORNERS****Base Shoe**

7/16 x 11/16

300BVG VGDougFir N/S

3/8 x 3/4

PR300AFJ PrimedFJPine N/S

Formerly PR300A ▼

300AFJ FJPine S

Formerly 300A ▼

300ASP SolidPine S

Formerly E300 ▼

300A-O Oak S

Formerly 300-0 ▼

PR300ALVL PrimedLVL **NEW** N/S

1/2 x 3/4

PR300BFJ PrimedFJPine N/S

Formerly PR300B ▼

300BSP SolidPine N/S**300B-O** Oak N/S**300BP** Poplar N/S**300BALD** Alder N/S**300BC** Cherry N/S**300BMH** Mahogany N/S**300BMP** Maple N/S**PR300BLVL** PrimedLVL **NEW** N/S**Base Shoe Round Corner**

3/8 x 3/4

PR300AFJW PrimedFJPine N/S**300AFJW** FJPine S**300ASPW** SolidPine S

Formerly E300W ▼

300A-OW Oak S

Formerly 300-OW ▼

PR300ALVLW PrimedLVL N/S

1/2 x 3/4

PR300BFJW PrimedFJPine N/S**300BSPW** SolidPine N/S

Formerly E300BW ▼

300B-OW Oak N/S**300BPW** Poplar N/S**300BALDW** Alder N/S**300BCW** Cherry N/S**300BMHW** Mahogany N/S**300BMPW** Maple N/S**PR300BLVLW** PrimedLVL N/S**BASE SHOE RADIUS CORNERS****Over 3/8" - 7/16" Base Corner**

3/8 x 3/4

300ASPW1 SolidPine S

Formerly 3001W ▼

300A-OW1 Oak S

Formerly 3001-OW ▼

1/2 x 3/4

300BSPW1 SolidPine N/S

Formerly 3001BW ▲▼

300B-OW1 Oak N/S

Formerly 3001B-OW ▲▼

300BMPW1 Maple S

Formerly 3001BMPW ▼

Over 1/2" - 9/16" Base Corner

3/8 x 3/4

300ASPW2 SolidPine S

Formerly 3002W ▼

300A-OW2 Oak S

Formerly 3002-OW ▼

1/2 x 3/4

300BSPW2 SolidPine N/S

Formerly 3002BW ▲▼

300B-OW2 Oak N/S

Formerly 3002B-OW ▲▼

300BPW2 Poplar S

Formerly 3002BPW ▼

300BALDW2 Alder N/S

Formerly 3002BALDW ▲▼

300BCW2 Cherry N/S

Formerly 3002BCW ▲

300BMPW2 Maple N/S

Formerly 3002BMPW ▲▼

Over 5/8" - 11/16" Base Corner

3/8 x 3/4

300ASPW3 SolidPine S

Formerly 3003W ▼

1/2 x 3/4

300BSPW3 SolidPine N/S

Formerly 3003BW ▲▼

300B-OW3 Oak N

Formerly 3003B-OW ▲▼



Flat Base/Apron

7/16 x 1-1/2

301FJ	FJ Pine	N/S
301SP	Solid Pine	S



Combination Base & Shoe

7/16 x 1-9/16

308SP	Solid Pine	S
--------------	------------	---



Streamline Base

7/16 x 1-5/8

302SP	Solid Pine	S
--------------	------------	---



Streamline Base

1/2 x 1-5/8

303SP	Solid Pine	S
--------------	------------	---



Streamline Base

3/8 x 2-1/4

304MUL	Ultralight MDF	N/S
NEW PR304FJ	Primed FJ Pine	S
304FJ	FJ Pine	S
304SP	Solid Pine	S



Reversible Base

3/8 x 2-1/4

R304MUL-2	Ultralight MDF	N/S
PRR304FJ-2	Primed FJ Pine	N
<i>Formerly PR304FJ-2 ▲</i>		

R304SP-2	Solid Pine	N
R304VG-2	VG Doug Fir	N/S
R304-O2	Oak	N

1/2 x 2-1/4

PRR305FJ-2	Primed FJ Pine	N
<i>Formerly PR304LDF-2 ▲</i>		

R306SP-2	Solid Pine	N
-----------------	------------	---



Streamline Base

1/2 x 2-1/4

PR306FJ	Primed FJ Pine	N
306BSP	Solid Pine	N
<i>Formerly 306SP ▲</i>		

1/2 x 2-1/2

306SP	Solid Pine	S
--------------	------------	---



Coronado Base

7/16 x 2-1/4

PR314FJ-2	Primed FJ Pine	N
------------------	----------------	---



Streamline Base

7/16 x 2-1/2

NEW PR305FJ	Primed FJ Pine	S
305FJ	FJ Pine	S
305SP	Solid Pine	S



Streamline Base

3/8 x 2-1/2

306-O	Oak	S
--------------	-----	---



Combination Base & Shoe

1/2 x 2-1/2

309SP	Solid Pine	S
--------------	------------	---



#711 Base

3/8 x 2-1/2

310MUL	Ultralight MDF	N/S
310-O	Oak	S

7/16 x 2-1/2

310BMUL	Ultralight MDF	S
PR310FJ	Primed FJ Pine	S
310FJ	FJ Pine	S
310SP-SC	Solid Pine	S

1/2 x 2-1/2

310SP	Solid Pine	S
310VG	VG Doug Fir	S

5/8 x 2-1/2

310BFJ	FJ Pine	S
<i>Formerly 310B ▼</i>		

**#1550 Base**

7/16 x 2-1/2

313SP Solid Pine S**#356 Base**

1/2 x 2-1/2

319MUL UltralightMDF S**319FJ** FJPine S**3-Step Base**

7/16 x 2-1/2

321FJ-2 FJPine S

Formerly 312A ▼

1/2 x 2-1/2

321SP-2 Solid Pine S

Formerly E312 ▼

**#711 Base**

1/2 x 3

311LDF-3N LightDensityLDF S

Formerly 311LDF-3 ▼

**Coronado/#623 Base**

1/2 x 3-3/16

314FJ-3SC FJPine S

Formerly 314A-SC ▼

1/2 x 3-1/4

314MUL-3SC UltralightMDF S

9/16 x 3-1/4

314MUL-3 UltralightMDF N/S**PR314FJ-3** PrimedFJPine N/S**314FJ-3** FJPine N/S

Formerly 314A ▼

314SP-3 Solid Pine N/S**314VG-3** VGDoug Fir N/S**314-03** Oak N/S**314P-3** Poplar N/S**314ALD-3** Alder N/S**314KA-3** KnottyAlder N**314C-3** Cherry N**314MH-3** Mahogany N**314MP-3** Maple N**Reversible Base**

3/8 x 3-1/4

PRR304FJ-3 PrimedFJPine N

Formerly PR304FJ-3 ▲

R304SP-3 Solid Pine N**R304-03** Oak N

1/2 x 3-1/4

PRR305FJ-3 PrimedFJPine N

Formerly PR305FJ-3 ▲

R306SP-3 Solid Pine N**R306VG-3** VGDoug Fir N/S**Streamline Base**

1/2 x 3-1/4

307BSP Solid Pine N

Formerly 307SP ▲

**Scant Coronado/
#623 Base**

1/2 x 3-1/4

NEW**314BMUL-3SC** UltralightMDF N

Formerly 314MUL-3SC ▲

**Colonial/#356 Base**

7/16 x 3-1/4

PR320FJ PrimedFJPine N/S**320FJ** FJPine S

1/2 x 3-1/4

320MUL UltralightMDF N/S**320SP** Solid Pine N/S**Peninsula Base**

9/16 x 3-1/4

PR344FJ-3 PrimedFJPine N



Edgewood Base

9/16 x 3-1/4

PR347FJ-3 PrimedFJPine N



#366 Base

9/16 x 3-1/4

366MUL UltralightMDF S



**Crescent/
Lancaster Base**

9/16 x 3-7/16

PR365FJ-3 PrimedFJPine N/S



Sierra Base

9/16 x 3-1/4

351MUL UltralightMDF N/S



Montecito Base

9/16 x 3-1/4

PR371FJ-3 PrimedFJPine N



**Santa Clara/
Crescent Base**

9/16 x 3-7/16

339FJ FJPine S

9/16 x 3-1/2

339MUL UltralightMDF N/S



Riviera Base

9/16 x 3-1/4

PR356FJ-3 PrimedFJPine N



Santa Fe/#175 Base

9/16 x 3-3/8

338-03 Oak N

9/16 x 3-7/16

PR338FJ-3 PrimedFJPine N/S

9/16 x 3-1/2

338MUL-3 UltralightMDF N/S

Formerly 325MUL-3 ▼



Colonial Base/Casing

9/16 x 3-1/2

118MUL-3 UltralightMDF S

PR118FJ-3 PrimedFJPine S



**Monterey/
Sonoma Base**

9/16 x 3-1/4

361MUL-3 UltralightMDF N/S



Classic Beaded Base

9/16 x 3-7/16

PR358FJ PrimedFJPine N/S

BASEBOARD

**Streamline/
Bullnose Base**

3/8 x 3-1/2

307-0 Oak S

7/16 x 3-1/2

PR307FJ Primed FJ Pine S**307FJ** FJ Pine S**307SP** Solid Pine S

9/16 x 3-1/2

307MUL Ultralight MDF N/S**3-Step Base**

1/2 x 3-1/2

321MUL-3 Ultralight MDF N/S

Formerly 322MUL ▲▼

321FJ-3 FJ Pine S

Formerly 322A ▼

321SP-3 Solid Pine N/S

Formerly 322SP ▲, E322 ▼

**1 Eased Edge
Craftsman Base**

7/16 x 3-1/2

387MUL-3 Ultralight MDF N/S

Formerly 388MUL-3 ▼

PR387FJ-3 Primed FJ Pine N/S**#711 Base**

3/8 x 3-1/2

311MUL Ultralight MDF N/S**311-0** Oak S**311P-3** Poplar S

Formerly 311P ▼

311ALD-3 Alder S

Formerly 311ALD ▼

311MH-3 Mahogany S

Formerly 311MH ▼

7/16 x 3-1/2

311BMUL Ultralight MDF S**PR311FJ** Primed FJ Pine S**311FJ** FJ Pine S**311SP** Solid Pine S

1/2 x 3-1/2

311VG VG Doug Fir S**Monterey Base**

7/16 x 3-1/2

335MUL Ultralight MDF S**Palos Verde Base**

1 x 3-1/2

367FJ FJ Pine S

Formerly 327A ▼

**Mission/
Hermosa Base**

9/16 x 3-3/4

324MUL Ultralight MDF N/S**324FJ** FJ Pine S**324-0** Oak N/S**324P** Poplar N/S**324ALD** Alder N/S**324C** Cherry N/S**324MH** Mahogany N/S**324MP** Maple N/S**Santa Fe/#175 Base**

9/16 x 3-3/4

338P-3 Poplar N/S

Formerly 362P ▼



Cape Cod Base

7/16 x 3-7/8

313MUL	UltralightMDF	S
---------------	---------------	---



Cape Cod Base

9/16 x 4

318MUL-4	UltralightMDF	N/S
-----------------	---------------	-----

Formerly 318MUL ▲▼

318FJ-4	FJPine	S
----------------	--------	---

Formerly 318A ▼

318SP-4	SolidPine	S
----------------	-----------	---

Formerly E318 ▼

318-04	Oak	N/S
---------------	-----	-----

Formerly 318-0 ▲▼

318P-4	Poplar	N/S
---------------	--------	-----

Formerly 318P ▲▼

318ALD-4	Alder	S
-----------------	-------	---

Formerly 318ALD ▼

318C-4	Cherry	N/S
---------------	--------	-----

Formerly 318C ▲▼

318MH-4	Mahogany	N/S
----------------	----------	-----

Formerly 318MH ▼

318MP-4	Maple	N/S
----------------	-------	-----

Formerly 318MP ▲▼



Monterey Base

7/16 x 4-1/4

PR316FJ	PrimedFJPine	S
----------------	--------------	---

316FJ	FJPine	S
--------------	--------	---

316-0	Oak	S
--------------	-----	---



**Victorian/
Newport Base**

9/16 x 3-7/8

329MUL	UltralightMDF	N/S
---------------	---------------	-----

329-0	Oak	N/S
--------------	-----	-----

329P	Poplar	N/S
-------------	--------	-----

329ALD	Alder	N/S
---------------	-------	-----

329KA	KnottyAlder	S
--------------	-------------	---

329C	Cherry	N/S
-------------	--------	-----

329MH	Mahogany	N/S
--------------	----------	-----

329MP	Maple	N/S
--------------	-------	-----



Coronado/#620 Base

9/16 x 4-1/4

314MUL-4	UltralightMDF	N/S
-----------------	---------------	-----

PR314FJ-4	PrimedFJPine	N/S
------------------	--------------	-----

314-04	Oak	N/S
---------------	-----	-----

314P-4	Poplar	N/S
---------------	--------	-----

314ALD-4	Alder	N/S
-----------------	-------	-----

314KA-4	KnottyAlder	N
----------------	-------------	---

314C-4	Cherry	N/S
---------------	--------	-----

314MH-4	Mahogany	N/S
----------------	----------	-----

314MP-4	Maple	N/S
----------------	-------	-----



3-Step Base

1/2 x 4-1/8

321MUL-4	UltralightMDF	N/S
-----------------	---------------	-----

Formerly 321MUL ▼



#711 Base

7/16 x 4-3/16

311MUL-4	UltralightMDF	S
-----------------	---------------	---

311LDF-4	LightDensityLDF	S
-----------------	-----------------	---

311P-4	Poplar	S
---------------	--------	---

311ALD-4	Alder	S
-----------------	-------	---

311MH-4	Mahogany	S
----------------	----------	---



Cape Cod Base

9/16 x 4-1/4

PR318BFJ-4	PrimedFJPine	N/S
-------------------	--------------	-----

Formerly PR318FJ ▲, PR318A ▼

BASEBOARD



**Santa Clara/
Crescent Base**

9/16 x 4-1/4

326MUL	UltralightMDF	N/S
326-O	Oak	S
326P	Poplar	S
11/16 x 4-1/4		
326FJ	FJPine	S



Solano Base/Casing

9/16 x 4-1/4

362MUL-4	UltralightMDF	N
PR362FJ-4	PrimedFJPine	N

Colonial Base/Casing

1/2 x 4-1/4

118-O4	Oak	S
<i>Formerly 118-O ▼</i>		
118P-4	Poplar	S
<i>Formerly 118P ▼</i>		

9/16 x 4-1/4

118MUL-4	UltralightMDF	S
PR118FJ-4	PrimedFJPine	S
<i>Formerly PR118A ▼</i>		
118FJ-4	FJPine	S
<i>Formerly 118A ▼</i>		
118SP-4	SolidPine	S
<i>Formerly E118 ▼</i>		



Contemporary Base

9/16 x 4-1/4

PR372FJ-4	PrimedFJPine	N/S
------------------	--------------	-----



Colonial Base

1/2 x 4-1/4

328VG-4	VG DougFir	N/S
----------------	------------	-----



Imperial/#175 Base

9/16 x 4-1/4

PR325FJ	PrimedFJPine	N/S
325FJ	FJPine	S

9/16 x 4-3/8

325P	Poplar	S
325ALD	Alder	S
325C	Cherry	S
325MH	Mahogany	S
325MP	Maple	S

9/16 x 4-1/2

325MUL	UltralightMDF	N/S
<i>Formerly 325MUL-4 ▼</i>		



Montecito Base

9/16 x 4-1/4

PR371FJ-4	PrimedFJPine	N
------------------	--------------	---



Mission Bay Base

5/8 x 4-1/4

333P-4	Poplar	S
<i>Formerly 361P ▼</i>		

BASEBOARD



Santa Fe/#175 Base
 9/16 x 4-3/8

338-04	Oak	N
338P-4	Poplar	N
338ALD-4	Alder	N
338C-4	Cherry	N
338MH-4	Mahogany	N
338MP-4	Maple	N
<hr/>		
9/16 x 4-1/2		
338MUL-4	UltralightMDF	N/S
PR338FJ-4	PrimedFJPine	N/S



3-Step Base
 1/2 x 4-1/2

321FJ-4	FJPine	S
<i>Formerly 321A ▼</i>		



**Monterey/
 Sonoma Base**
 9/16 x 4-1/2

361MUL-4	UltralightMDF	N/S
<i>Formerly 370MUL ▼</i>		



**1 Eased Edge
 Craftsman Base**
 5/8 x 4-3/8

387-04	Oak	N/S
<i>Formerly 348-0 ▼</i>		
387P-4	Poplar	S
<i>Formerly 348P ▼</i>		
387ALD-4	Alder	N/S
<i>Formerly 348ALD ▼</i>		
387C-4	Cherry	N/S
<i>Formerly 348C ▼</i>		
387MH-4	Mahogany	N/S
<i>Formerly 348MH ▼</i>		
387MP-4	Maple	N/S
<i>Formerly 348MP ▼</i>		
<hr/>		
1/2 x 4-1/2		
387MUL-4	UltralightMDF	N/S
<i>Formerly 388MUL-4 ▼</i>		
387VG-4	VG DougFir	N/S



**Del Mar/New
 Hampshire Base**
 9/16 x 4-1/2

327MUL-4	UltralightMDF	N/S
<i>Formerly 327MUL ▲▼</i>		



**Carolina/
 Palisade Base**
 9/16 x 4-1/2

PR380FJ	PrimedFJPine	N/S
<i>Formerly PR382A ▼</i>		



Meridian Base
 9/16 x 4-1/4

349MUL-4	UltralightMDF	N/S
PR349FJ-4	PrimedFJPine	N/S



**S4S Notched
 Modern Base**
 9/16 x 4-1/2

392MUL-4	UltralightMDF	N/S
-----------------	---------------	-----

BASEBOARD



**Mission/
Hermosa Base**

9/16 x 5

323MUL UltralightMDF N/S

PR323FJ PrimedFJPine N/S

323FJ FJPine S

5/8 x 5

323-0 Oak N/S

323P Poplar N/S

323C Cherry N/S

323MH Mahogany N/S

323MP Maple N/S



Edgewood Base

9/16 x 5-3/16

PR347FJ-5 PrimedFJPine N



**Sierra/
Montecito Base**

9/16 x 5

PR336FJ PrimedFJPine N/S



Classic Base

11/16 x 5-1/4

PR313FJ PrimedFJPine N



Coronado/#618 Base

1/2 x 5-1/4

314MUL-5SC UltralightMDF N

9/16 x 5-1/4

314MUL-5 UltralightMDF N/S
Formerly 315MUL ▼

PR314FJ-5 PrimedFJPine N/S

314FJ-5 FJPine S

Formerly 315A ▼

314SP-5 SolidPine N/S

314-05 Oak N/S

314P-5 Poplar N/S

Formerly 315P ▼

314ALD-5 Alder N/S

Formerly 315ALD ▼

314KA-5 KnottyAlder N

314C-5 Cherry N

314MH-5 Mahogany N

314MP-5 Maple N



Intrada Base

9/16 x 5

390MUL UltralightMDF N/S

BASEBOARD



**Victorian/
Newport Base**

9/16 x 5

330MUL UltralightMDF S

330-0 Oak S

330P Poplar S

330ALD Alder S

330KA KnottyAlder S

330C Cherry S

330MH Mahogany S

330MP Maple S



Crescent Base

9/16 x 5-1/4

317MUL	Ultralight MDF	S
317FJ	FJPine	S



"B" Cape Cod Base

9/16 x 5-1/4

318BMUL	Ultralight MDF	S
318BFJ	FJPine	S
<i>Formerly 318B ▼</i>		



**Vintage/
Colonial Base**

1/2 x 5-1/4

328VG-5	VG DougFir	N/S
----------------	------------	-----

328MUL-5	Ultralight MDF	N/S
<i>Formerly 328MUL ▼</i>		

NEW 328RFJ-5	Primed FJPine	N/S
---------------------	---------------	-----

328FJ-5	FJPine	S
<i>Formerly 325A ▼</i>		

328P-5	Poplar	S
<i>Formerly 328P ▼</i>		

328ALD-5	Alder	N/S
<i>Formerly 328ALD ▼</i>		

328KA-5	KnottyAlder	N
----------------	-------------	---



Cape Cod Base

9/16 x 5-1/4

318MUL-5	Ultralight MDF	N/S
PR318FJ-5	Primed FJPine	N/S

318SP-5	Solid Pine	N/S
----------------	------------	-----

318-05	Oak	S
<i>Formerly 318B-0 ▼</i>		

318P-5	Poplar	N/S
<i>Formerly 318BP ▼</i>		

318ALD-5	Alder	S
<i>Formerly 318BALD ▼</i>		

318C-5	Cherry	N/S
<i>Formerly 318BC ▼</i>		

318MP-5	Maple	N/S
<i>Formerly 318BMP ▼</i>		

318MH-5	Mahogany	N/S
<i>Formerly 318BMH ▼</i>		



3-Step Base

1/2 x 5-1/4

PR321FJ-5	Primed FJPine	N/S
------------------	---------------	-----



**Del Mar/New
Hampshire Base**

9/16 x 5-1/4

327MUL-5	Ultralight MDF	N/S
-----------------	----------------	-----



**Victorian/
Newport Base**

9/16 x 5-1/4

330BMUL	Ultralight MDF	N/S
----------------	----------------	-----

330B-0	Oak	N
---------------	-----	---

330BP	Poplar	N
--------------	--------	---

330BALD	Alder	N
----------------	-------	---

330BC	Cherry	N
--------------	--------	---

330BMP	Maple	N
---------------	-------	---

330BMH	Mahogany	N
---------------	----------	---

BASEBOARD



Monterey Base

9/16 x 5-1/4

341MUL UltralightMDF S



Georgian Base

9/16 x 5-1/4

350MUL UltralightMDF N/S



Riviera Base

9/16 x 5-1/4

PR356FJ-5 PrimedFJPine N



Peninsula Base

9/16 x 5-1/4

PR344FJ-5 PrimedFJPine N



Sierra Base

1/2 x 5-1/4

352MUL-SC UltralightMDF N

9/16 x 5-1/4

352MUL UltralightMDF N/S

PR352FJ PrimedFJPine N



**Monterey/
Sonoma Base**

9/16 x 5-1/4

361MUL-5 UltralightMDF N/S

Formerly 361MUL ▲

5/8 x 5-1/4

361-05 Oak N

Formerly 361-0 ▲

361P-5 Poplar N

Formerly 361P ▲

361ALD-5 Alder N

Formerly 361ALD ▲

361KA-5 KnottyAlder N

Formerly 361KA ▲

361C-5 Cherry N

Formerly 361C ▲

361MH-5 Mahogany N

Formerly 361MH ▲

361MP-5 Maple N

Formerly 361MP ▲

11/16 x 5-1/4

PR361FJ-5 PrimedFJPine N/S



Meridian Base

9/16 x 5-1/4

349MUL-5 UltralightMDF N/S

PR349FJ-5 PrimedFJPine N/S



Harris Base

9/16 x 5-1/4

355MUL UltralightMDF N/S

BASEBOARD



Solano Base

9/16 x 5-1/4

362MUL-5 UltralightMDF N

Colonial Base

9/16 x 5-1/4

118MUL-5 UltralightMDF S

118P-5 Poplar S



Crescent Base

3/4 x 5-1/4

365P-5 Poplar N



Howe Base

9/16 x 5-1/4

PR384FJ PrimedFJPine S



**Crescent/
Lancaster Base**

5/8 x 5-1/4

365MUL UltralightMDF S

PR365FJ-5 PrimedFJPine N/S

365FJ-5 FJPine S

Formerly 365FJ ▼



#566 Base

9/16 x 5-1/4

368MUL UltralightMDF S



Contemporary Base

1/2 x 5-1/4

372MUL-5 UltralightMDF N/S

9/16 x 5-1/4

PR372FJ-5 PrimedFJPine N/S

1/2 x 5-1/2

372VG-5 VG DougFir N/S



Montecito Base

9/16 x 5-1/4

PR371FJ-5 PrimedFJPine N

BASEBOARD



Santa Fe/#175 Base

9/16 x 5-1/4

338MUL-5 UltralightMDF N/S
Formerly 338MUL ▼

9/16 x 5-3/8

338-05 Oak N
338P-5 Poplar N/S
338ALD-5 Alder N
338KA-5 KnottyAlder N
338C-5 Cherry N/S
Formerly 338C ▼

338MH-5 Mahogany N/S
Formerly 338MH ▼

338MP-5 Maple N/S
Formerly 338MP ▼

9/16 x 5-7/16

PR338FJ-5 PrimedFJPine N/S
Formerly PR338A ▼

338FJ-5 FJPine S
Formerly 338A ▼



Classic Beaded Base

9/16 x 5-1/4

359P Poplar N

9/16 x 5-7/16

359MUL UltralightMDF N/S
Formerly 377MUL ▼

PR359FJ PrimedFJPine N/S



1 Eased Edge Craftsman Base

5/8 x 5-7/16

387KA-5 KnottyAlder N

1/2 x 5-1/2

387MUL-5 UltralightMDF N/S
Formerly 388MUL-5 ▼

PR387FJ-5 PrimedFJPine N/S

387SP-5 SolidPine N/S

387VG-5 VGDougFir N/S



S4S Notched Modern Base

9/16 x 5-1/2

392MUL-5 UltralightMDF N/S

BASEBOARD



Bullnose Base

9/16 x 5-1/2

354MUL UltralightMDF N/S



Santa Clara/Crescent Base

5/8 x 5-3/4

332P Poplar N/S

11/16 x 5-3/4

332MUL UltralightMDF N/S



Cape Cod Base

5/8 x 6

360P Poplar S



**Carolina/
Palisade Base**

9/16 x 6

PR385FJ	Primed FJPine	N/S
5/8 x 6		
385MUL	Ultralight MDF	N/S
385-0	Oak	N
385P	Poplar	N
385ALD	Alder	N/S
385C	Cherry	N
385MP	Maple	N
385MH	Mahogany	N



**1 Eased Edge
Craftsman Base**

5/8 x 6

PR387FJ-6	Primed FJPine	N/S
Formerly PR383A		▼
387-06	Oak	N/S
Formerly 383-0		▼
387P-6	Poplar	N/S
Formerly 383P		▼
387ALD-6	Alder	N/S
Formerly 383ALD		▼
387KA-6	Knotty Alder	S
Formerly 383KA		▼
387C-6	Cherry	N/S
Formerly 383C		▼
387MH-6	Mahogany	N/S
Formerly 383MH		▼
387MP-6	Maple	N/S
Formerly 383MP		▼

BASEBOARD



Imperial/#175 Base

5/8 x 6

342MUL-6	Ultralight MDF	N/S
Formerly 342MUL		▲▼
342ALD-6	Alder	N/S
Formerly 342ALD		▲▼
342KA-6	Knotty Alder	N/S
Formerly 342KA		▲▼



Tuscany Base

11/16 x 6

375MUL	Ultralight MDF	N/S
375-06	Oak	N/S
375P-6	Poplar	N/S
Formerly 375P		▲, 363P ▼
375C	Cherry	S
375MH	Mahogany	S
375MP	Maple	S



**Vintage/
Colonial Base**

9/16 x 6-1/8

328MUL-6	Ultralight MDF	N/S
-----------------	----------------	-----



Imperial/#175 Base

5/8 x 6-1/4

342P-6 Poplar N/S

Formerly 342P ▲▼

342C-6 Cherry S

Formerly 342C ▼

342MH-6 Mahogany S

Formerly 342MH ▼

342MP-6 Maple S

Formerly 342MP ▼



Savannah/Vermont Base (Thin Version)

9/16 x 6-1/2

334BMUL Ultralight MDF N/S



Santa Fe/#175 Base

11/16 x 7-3/16

338P-7 Poplar N/S

Formerly 366P ▼

BASEBOARD



Savannah/Vermont Base

3/4 x 6-1/2

334MUL Ultralight MDF S



Plinth Base

11/16 x 6-1/2

389MUL Ultralight MDF N/S



Solano/Colonial Base

9/16 x 7-1/4

118MUL-7 Ultralight MDF S



Coronado/#613 Base
 9/16 x 7-1/4

314MUL-7 UltralightMDF N/S



**Malibu/
 Hermosa Base**
 9/16 x 7-1/4

340MUL UltralightMDF N/S

11/16 x 7-1/4

340P Poplar N/S

340ALD Alder N/S



Laguna Base
 9/16 x 7-1/4

343MUL UltralightMDF S



Mission Bay Base
 9/16 x 7-1/4

333MUL UltralightMDF N/S

11/16 x 7-1/4

333P-7 Poplar S

Formerly 333P ▼



Imperial/#175 Base
 5/8 x 7-1/4

342MUL-7 UltralightMDF N/S



**Santa Clara/
 Crescent Base**
 5/8 x 7-1/4

345MUL UltralightMDF N/S

BASEBOARD



Meridian Base

5/8 x 7-1/4

NEW

PR349FJ-7 PrimedFJPine N/S

9/16 x 7-3/8

NEW

349MUL-7 UltralightMDF N/S



Bullnose Base

9/16 x 7-1/4

358MUL UltralightMDF N/S



**Monterey/
Sonoma Base**

9/16 x 7-1/4

361MUL-7 UltralightMDF N/S
Formerly 386MUL ▲▼

361-07 Oak N
Formerly 386-0 ▲

361P-7 Poplar N/S
Formerly 386P ▲▼

361ALD-7 Alder N/S
Formerly 386ALD ▲▼

361C-7 Cherry N/S
Formerly 386C ▲▼

361MH-7 Mahogany N/S
Formerly 386MH ▲▼

361MP-7 Maple N/S
Formerly 386MP ▲▼

11/16 x 7-1/4

PR361FJ-7 PrimedFJPine N/S

BASEBOARD



Sierra Base

9/16 x 7-1/4

353MUL UltralightMDF N/S



Classic Beaded Base

9/16 x 7-1/4

360MUL UltralightMDF N/S
Formerly 376MUL ▼



Crescent Base

3/4 x 7-1/4

365P-7 Poplar N



Tuscany Base

9/16 x 7-1/4

375P-7 Poplar S

Formerly 378P ▼

11/16 x 7-1/4

375VG-7 VG Doug Fir N

Formerly 378VG ▲



Savannah Base

1 x 7-3/8

379MUL Ultralight MDF S



Contemporary Base

1/2 x 7-1/4

372MUL-7 Ultralight MDF N/S

9/16 x 7-1/4

PR372FJ-7 Primed FJ Pine N/S



**1 Eased Edge
Craftsman Base**

1/2 x 7-1/4

387MUL-7 Ultralight MDF N/S



**Victorian/
Newport Base**

9/16 x 8

331MUL Ultralight MDF N/S

BASEBOARD



Imperial/#175 Base

5/8 x 8-1/4

342MUL-8 UltralightMDF N/S
Formerly 357MUL ▼



Camden Base

1 x 8-1/2

381MUL UltralightMDF S



Santa Fe/#175 Base

9/16 x 9-1/4

338MUL-9 UltralightMDF N/S
Formerly 384MUL ▼

BASEBOARD



Savannah Base

1 x 8-1/2

380MUL UltralightMDF S



Williamsburg Base

1 x 8-1/2

382MUL UltralightMDF S



**Monterey/
Sonoma Base**

9/16 x 9-1/4

361MUL-9 UltralightMDF N/S
Formerly 383MUL ▲▼



STOP

DOOR STOP



1 Round Edge Stop

3/8 x 1

208SP Solid Pine S

1/2 x 1

205SP Solid Pine S

7/16 x 1-1/8

214SP Solid Pine N

3/8 x 1-1/4

202BFJ FJPine N

202SP Solid Pine S

202-O Oak S

202P Poplar S

7/16 x 1-1/4

201MUL Ultralight MDF N/S

201LDF Light DensityLDF N

PR201FJ PrimedFJPine N/S

201FJ FJPine N/S

201SP Solid Pine N

201VG VGDougFir N

201-O Oak N

201P Poplar N

201ALD Alder N

201C Cherry N

201MH Mahogany N

201MP Maple N

1/2 x 1-1/4

206FJ FJPine S

206SP Solid Pine S

7/16 x 1-3/8

PR216FJ PrimedFJPine N

216FJ FJPine N

216SP Solid Pine N

1/2 x 1-1/2

PR209FJ PrimedFJPine N/S

209FJ FJPine S

209VG VGDougFir N/S

209-O Oak S

209P Poplar S

209ALD Alder N/S

209C Cherry S

209MH Mahogany S

209MP Maple S

3/8 x 1-5/8

203SP Solid Pine S

7/16 x 1-5/8

217SP Solid Pine N

1/2 x 1-5/8

207SP Solid Pine S



1 Round Edge Stop

3/8 x 1/2

200SP Solid Pine S

3/8 x 3/4

213SP Solid Pine S

Formerly E201 ▼

1/2 x 3/4

204SP Solid Pine S

212SP Solid Pine N



Composite Sidelite Stop

3/8 x 5/8

PFSLSTOP PolyFiber N/S

Formerly PCSLSTOP ▲▼

WGSLSTOP OakWoodgrain PolyFiber N/S



1 Round Edge Stop

7/16 x 2-1/4

218SP Solid Pine N



Garage Door Stop

9/16 x 2-1/4

220FJ FJPine N



2 Round Edge Stop

3/8 x 1-1/4

202MUL UltralightMDF N/S

PR202FJ PrimedFJPine S

202FJ FJPine S

7/16 x 1-1/4

204MUL UltralightMDF N/S

1/2 x 1-3/8

203MUL UltralightMDF N/S

1/2 x 1-1/2

209BALD Alder N



Ogee Stop

7/16 x 1-1/4

PR208FJ PrimedFJPine N



Colonial/Ogee Stop

7/16 x 1-3/8

210BFJ FJPine N

Formerly 210FJ ▲

PR210BFJ PrimedFJPine N

Formerly PR210FJ ▲

210BSP Solid Pine N

Formerly 210SP ▲



Ogee Stop

7/16 x 1-3/8

PR219FJ PrimedFJPine N

219SP Solid Pine N/S

1/2 x 1-1/2

219-O Oak N



Colonial/Ogee Stop

1/2 x 1-3/4

210MUL UltralightMDF N/S



Colonial/Ogee Stop

1/2 x 1-3/4

PR210FJ PrimedFJPine S

210FJ FJPine S

210SP Solid Pine S

210-O Oak S

210P Poplar N/S

210ALD Alder N/S

210C Cherry N

210MH Mahogany N

210MP Maple N

**STOP****Kerfed 1 Round Edge Stop with Vinyl**

1/2 x 1-1/2 x 7'

211FJ FJPine S**Gray 3-Finger Vinyl for Kerfed Stop**

1/8 x 5/16

9023 Vinyl S**Howe Stop**

11/16 x 1-11/16

PR213FJ Primed FJPine N**Stop with Kerf**

1/2 x 1-1/2

209KFJ FJPine S

1/2 x 2

212KFJ FJPine S

Formerly 212KA ▼

CROWN & CORNICE**Pediment Crown**

1-3/16 x 1-1/2

438MUL Ultralight MDF N/S

1-1/4 x 1-1/2

607 Bodyguard N/S**Bed/Cabinet Crown**

1-7/16 x 1-3/4

PR452FJ Primed FJPine N/S**452P** Poplar S

Formerly 403P ▼

**Bed Mould**

9/16 x 1-7/8

437ALD Alder N**Colonial Crown**

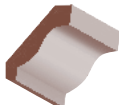
1/2 x 1-5/8

400-0 Oak N

9/16 x 1-5/8

PR400FJ Primed FJPine N/S**400SP** Solid Pine N**Corner Crown/Mould**

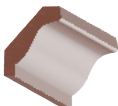
1 x 1-7/8

419MUL Ultralight MDF N/S**Crown**

9/16 x 2-1/4

401SP-2 Solid Pine S

Formerly E401 ▼

**Crown**

1/2 x 1-5/8

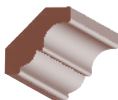
401-01 Oak S

Formerly 400-0 ▼

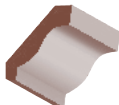
9/16 x 1-5/8

401SP-1 Solid Pine S

Formerly E400 ▼

**Bed Mould**

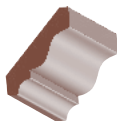
9/16 x 1-7/8

420MUL Ultralight MDF S**420ALD** Alder S**Crown**

1/2 x 2-1/4

401-02 Oak S

Formerly 401-0 ▼



Colonial Crown

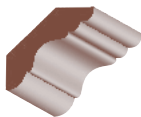
1/2 x 2-1/4

404-0 Oak S

9/16 x 2-1/4

PR404FJ Primed FJ Pine N/S
 Formerly PR401FJ ▲

404FJ FJ Pine S



Cornice

11/16 x 2-1/2

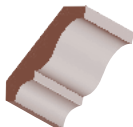
402FJ FJ Pine S



Pediment Crown

1-3/16 x 3

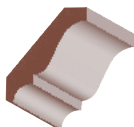
439MUL Ultralight MDF N/S



Colonial Crown

9/16 x 2-1/4

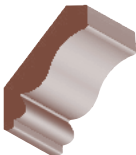
418SP Solid Pine S



Colonial Crown

9/16 x 2-5/8

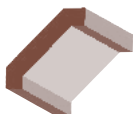
404MUL Ultralight MDF S
 Formerly 401MUL ▼



Edge Bead Crown

9/16 x 3-1/8

PR453FJ Primed FJ Pine N



Craftsman Crown

9/16 x 2-3/8

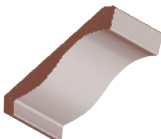
460MUL-2 Ultralight MDF N/S



Classic Pediment Crown

1-3/8 x 2-3/4

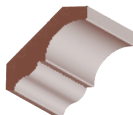
440MUL Ultralight MDF N/S



Crown

1/2 x 3-1/4

401-03 Oak S
 Formerly 402-0 ▼

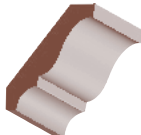


Ogee Crown

9/16 x 2-7/16

462MUL-2 Ultralight MDF N

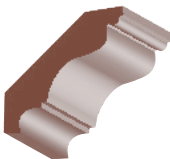
NEW



Colonial Crown

1/2 x 2-3/4

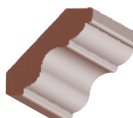
436-0 Oak N/S
 Formerly 401-0 ▲



Beaded Colonial Crown

1/2 x 3-1/4

405B-0 Oak S
 405BP Poplar S
 405BC Cherry S
 405BMH Mahogany S
 405BMP Maple S



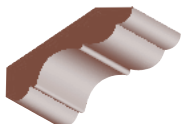
Bed Mould

9/16 x 2-1/2

402MUL Ultralight MDF S

436P Poplar N/S
 436ALD Alder N/S
 436C Cherry N/S
 436MH Mahogany N/S
 436MP Maple N/S
 9/16 x 2-3/4
 436MUL Ultralight MDF N/S
 PR436FJ Primed FJ Pine N
 436SP Solid Pine N

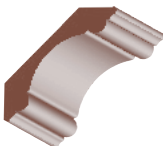
CROWN & CORNICE



Cornice

11/16 x 3-1/4

413FJ FJPine S



Double Bead Carolina Crown

3/4 x 3-3/8

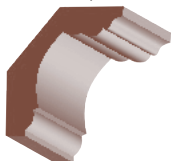
421MUL UltralightMDF N/S

11/16 x 3-7/16

PR421FJ PrimedFJPine N/S

3/4 x 3-7/16

421P Poplar N

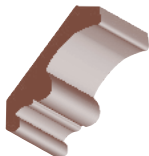


Cornice

1-1/4 x 3-9/16

451FJ FJPine S

Formerly411A ▼



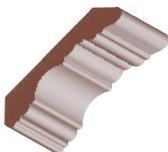
Single Beaded Crown

11/16 x 3-1/4

441MUL UltralightMDF N/S

PR441FJ PrimedFJPine N

441P Poplar N



Coronado/ Georgian Crown

9/16 x 3-7/16

426MUL UltralightMDF N/S

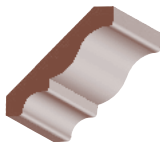


Colonial Crown

9/16 x 3-5/8

405BSP SolidPine N

Formerly405SP ▲



Colonial Crown

1/2 x 3-1/4

405-O Oak N/S

405P Poplar N/S

405ALD Alder N/S

405KA KnottyAlder S

405C Cherry N/S

405MH Mahogany N/S

405MP Maple N/S

9/16 x 3-1/4

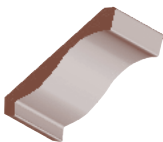
405MUL UltralightMDF S

9/16 x 3-3/8

PR405FJ PrimedFJPine N/S

405FJ FJPine S

405SP SolidPine S

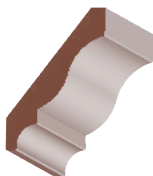


Crown

9/16 x 3-1/2

401SP-3 SolidPine S

FormerlyE402 ▼

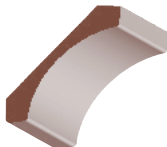


Colonial Crown

5/8 x 3-5/8

446MUL UltralightMDF N/S

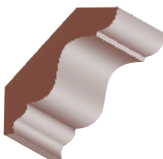
286 Bodyguard N/S



Contemporary Crown

9/16 x 3-3/8

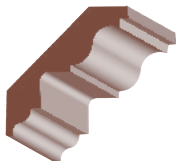
444MUL-3 UltralightMDF N/S



Bed Mould Crown

11/16 x 3-1/2

CR820P Poplar N/S

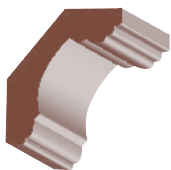


Dentil Ready Crown

3/4 x 3-3/4

425MUL-3 UltralightMDF N/S

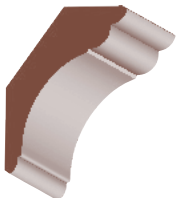
CROWN & CORNICE



Cornice Crown

1-3/16 x 3-3/4

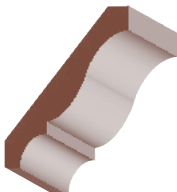
451MUL UltralightMDF S
 Formerly 411MUL ▼



Cornice

1-1/8 x 4-1/4

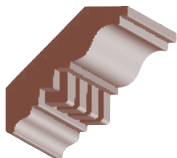
407SP Solid Pine S
 1-3/16 x 4-1/4
 407MUL UltralightMDF S



Colonial Crown

9/16 x 4-1/4

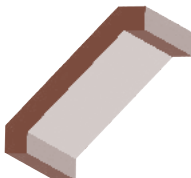
406MUL UltralightMDF N/S
 406VG VG DougFir N/S
 9/16 x 4-3/8



Dentil Crown

13/16 x 3-3/4

CM74-0 Oak N/S
 CM74P Poplar N/S
 CM74ALD Alder N/S
 CM74C Cherry N/S
 CM74MH Mahogany N/S
 CM74MP Maple N/S



Craftsman Crown

11/16 x 4-1/4

460MUL-4 UltralightMDF N/S

PR406FJ PrimedFJPine N/S

406FJ FJPine S

9/16 x 4-1/2

406SP Solid Pine N/S

3/4 x 4-1/2

406-0 Oak N/S

406P Poplar N/S

406ALD Alder N/S

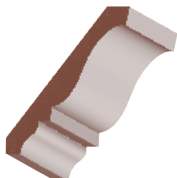
406KA KnottyAlder N/S

406C Cherry N/S

406MH Mahogany N/S

406MP Maple N/S

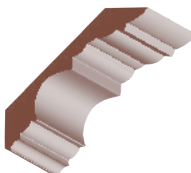
CROWN & CORNICE



Cape Cod Crown

9/16 x 4-1/8

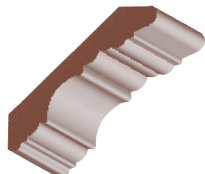
PR448FJ-4 PrimedFJPine N



Tempe Crown

3/4 x 4-1/4

467MUL UltralightMDF S



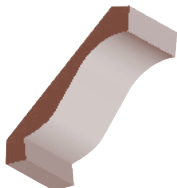
Coronado Crown

7/8 x 4-1/4

434MUL UltralightMDF N

5/8 x 4-3/8

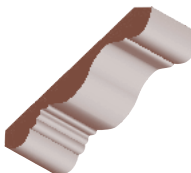
PR434FJ PrimedFJPine N



Crown

9/16 x 4-1/4

403SP Solid Pine S



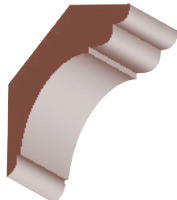
Small Charleston Crown

9/16 x 4-1/4

410MUL-4 UltralightMDF N/S
 Formerly 413MUL ▲▼

5/8 x 4-3/8

PR410FJ-4 PrimedFJPine N/S



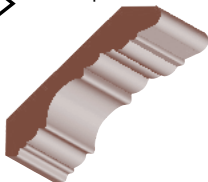
Cornice

1-1/8 x 4-1/2

PR407FJ PrimedFJPine N



CROWN & CORNICE



**Coronado/
Georgian Crown**

11/16 x 4-1/4

412FJ FJ Pine S

9/16 x 4-1/2

412MUL Ultralight MDF N/S

3/4 x 4-1/2

412-O Oak N/S

Formerly 434-0 ▲

412P Poplar N/S

Formerly 434P ▲

412ALD Alder N/S

Formerly 434ALD ▲

412KA KnottyAlder S

412C Cherry N/S

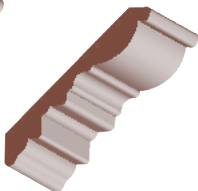
Formerly 434C ▲

412MH Mahogany N/S

Formerly 434MH ▲

412MP Maple N/S

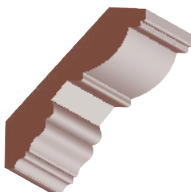
Formerly 434MP ▲



Savannah Crown

9/16 x 4-1/2

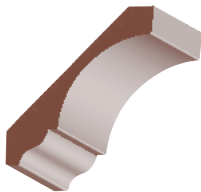
422MUL Ultralight MDF S



Monterey Crown

11/16 x 4-1/2

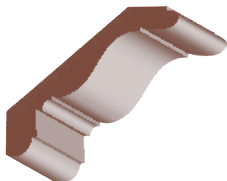
PR430FJ-4 PrimedFJPine N/S



Ogee Crown

3/4 x 4-9/16 **NEW**

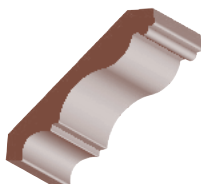
462MUL-4 UltralightMDF N



Cornice

1 x 4-5/8

408MUL-4 UltralightMDF N/S



**Beaded Colonial
Crown**

5/8 x 4-1/2

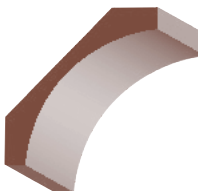
406B-0 Oak S

406BP Poplar S

406BC Cherry S

406BMH Mahogany S

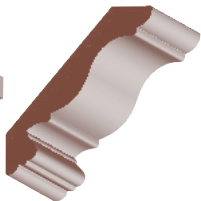
406BMP Maple S



**Contemporary
Crown**

1 x 4-1/2 **NEW**

444MUL-4 UltralightMDF N/S



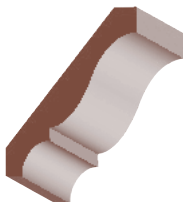
Rafael Crown

11/16 x 4-5/8

PR411FJ-4 PrimedFJPine N/S

3/4 x 4-5/8

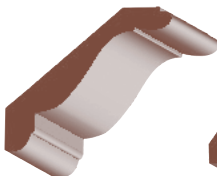
411MUL-4 UltralightMDF N/S



Colonial Crown

11/16 x 4-1/2

PR416FJ PrimedFJPine N



Rancho Crown

3/4 x 4-1/2

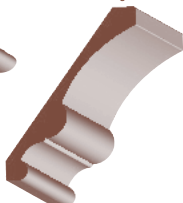
409MUL UltralightMDF N/S

13/16 x 4-1/2

409-0 Oak S

11/16 x 4-5/8

409FJ FJPine S



Single Beaded Crown

11/16 x 4-5/8

442MUL UltralightMDF N/S

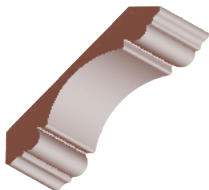
PR442FJ PrimedFJPine N

13/16 x 4-5/8

442P Poplar N

7/8 x 4-5/8

442BMUL UltralightMDF



**Double Bead
Carolina Crown**

11/16 x 4-5/8

423BMUL UltralightMDF N/S
 7/8 x 4-5/8

423MUL UltralightMDF N/S

423P Poplar N/S

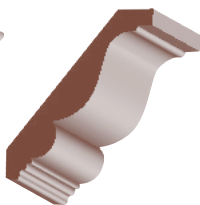
423ALD Alder N/S

423KA KnottyAlder N

423C Cherry N

423MH Mahogany N

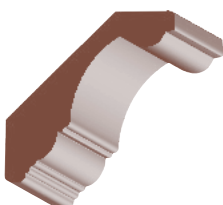
423MP Maple N



Imperial Crown

11/16 x 4-3/4

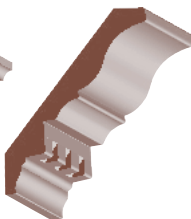
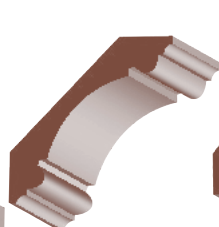
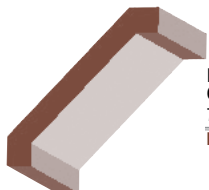
CR810P Poplar N/S



King George Crown

1-1/4 x 5

465LDF-5 LightDensityLDF S



**Double Bead
Carolina Crown**

7/8 x 4-15/16

PR423FJ PrimedFJPine N/S

Dentil Crown

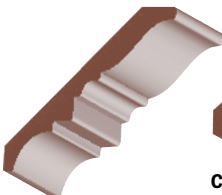
11/16 x 5-1/16

455LDF LightDensityLDF N/S

Craftsman Crown

11/16 x 4-5/8

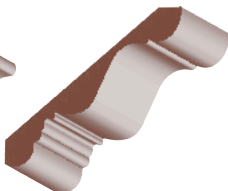
460VG VGDougFir N/S



Montecito Crown

5/8 x 5

PR418FJ PrimedFJPine N/S



Charleston Crown

11/16 x 5

410MUL-5 UltralightMDF N/S

11/16 x 5-1/4

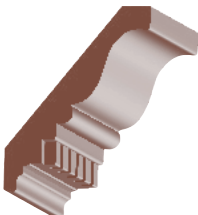
PR410FJ-5 PrimedFJPine N/S



Scottsdale Crown

3/4 x 4-11/16

469MUL UltralightMDF S

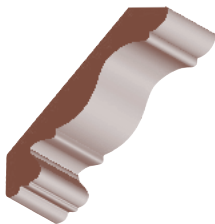


Dentil Crown

3/4 x 5

CR864P Poplar S

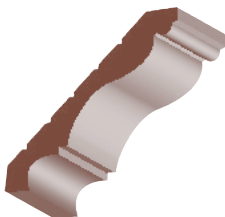
CROWN & CORNICE

**Rafael Crown**

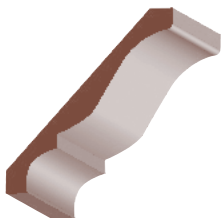
11/16 x 5-1/4

PR411FJ-5 Primed FJ Pine N/S

3/4 x 5-1/4

411MUL-5 Ultralight MDF N/S**Beaded Colonial Crown**

3/4 x 5-1/4

414B-0 Oak S**414BP** Poplar N/S**414BALD** Alder N/S**414BC** Cherry S**414BMH** Mahogany S**414BMP** Maple S**Colonial Crown**

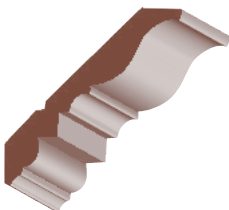
9/16 x 5-1/4

414MUL Ultralight MDF N/S**414LDF** Light Density LDF N**PR414FJ** Primed FJ Pine N/S**414FJ** FJ Pine S**414SP** Solid Pine N/S**414VG** VGDoug Fir N/S

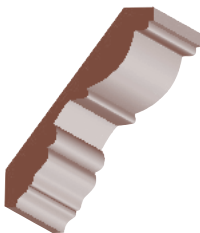
11/16 x 5-1/4

PR415FJ Primed FJ Pine N

3/4 x 5-1/4

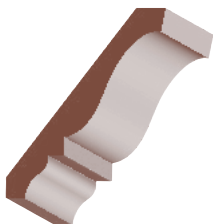
414-0 Oak N/S**414P** Poplar N/S**414ALD** Alder N/S**414KA** Knotty Alder N/S**414C** Cherry N/S**414MH** Mahogany N/S**414MP** Maple N/S**Georgian Crown**

11/16 x 5-1/4

PR419FJ Primed FJ Pine N/S**Monterey Crown**

11/16 x 5-1/4

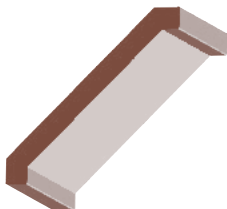
PR430FJ-5 Primed FJ Pine N/S



Cape Cod Crown

9/16 x 5-1/4

PR448FJ-5 Primed FJ Pine N



Craftsman Crown

3/4 x 5-1/4

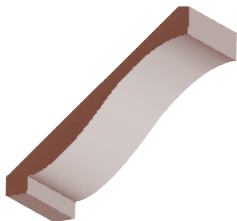
460MUL-5 Ultralight MDF N/S



Madison Crown

13/16 x 5-1/4

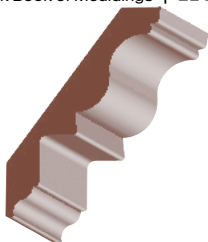
C0705P Poplar S



Crown

9/16 x 5-1/2

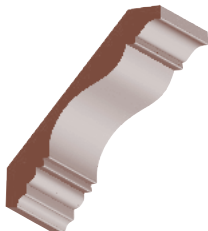
404SP Solid Pine S



Dentil Ready Crown

13/16 x 5-1/2

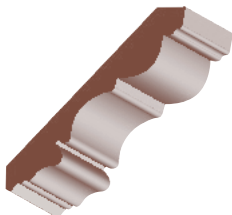
425MUL-5 Ultralight MDF N/S



Covington Crown

11/16 x 5-1/2

CR806P Poplar S



Lancaster Crown

13/16 x 5-1/2

CR830P Poplar S

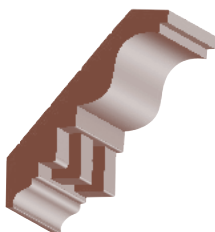


Pembroke Crown

11/16 x 5-1/2

CR880P Poplar N/S

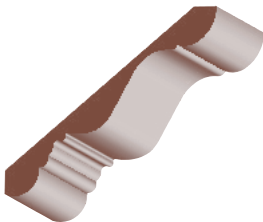
CROWN & CORNICE



Dentil Crown

13/16 x 5-1/2

CM73-0	Oak	N/S
CM73P	Poplar	N/S
CM73ALD	Alder	N/S
CM73C	Cherry	N/S
CM73MH	Mahogany	N/S
CM73MP	Maple	N/S



Charleston Crown

5/8 x 6

410FJ-6	FJPine	S
<i>Formerly 410A ▼</i>		

11/16 x 6

410MUL-6	UltralightMDF	N/S
<i>Formerly 410MUL ▲▼</i>		

PR410FJ-6	PrimedFJPine	N/S
410SP-6	SolidPine	S
<i>Formerly E410 ▼</i>		

410-06	Oak	N/S
<i>Formerly 410-0 ▲▲▼</i>		

3/4 x 6

410P-6	Poplar	N/S
<i>Formerly 410P ▲▲▼</i>		

410ALD-6	Alder	N/S
<i>Formerly 410ALD ▲▲▼</i>		

410KA-6	KnottyAlder	S
<i>Formerly 410KA ▼</i>		

410C-6	Cherry	N/S
<i>Formerly 410C ▲▲▼</i>		

410MH-6	Mahogany	N/S
<i>Formerly 410MH ▲▲▼</i>		

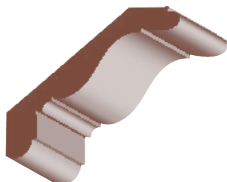
410MP-6	Maple	N/S
<i>Formerly 410MP ▲▲▼</i>		



Contemporary Crown

1-1/8 x 5-5/8

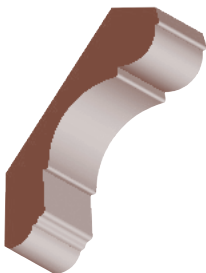
444MUL-5	UltralightMDF	N/S
<i>Formerly 444MUL ▲▲▼</i>		



Cornice

1-1/4 x 5-3/4

408FJ	FJPine	S
--------------	--------	---

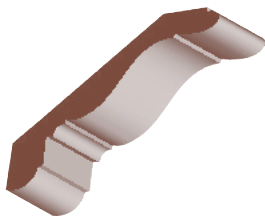


**Nantucket/
La Costa Crown**

1-3/16 x 6

453MUL	UltralightMDF	N/S
---------------	---------------	-----

CROWN & CORNICE



Cornice

1 x 6

408MUL-6	Ultralight MDF	N/S
-----------------	----------------	-----

Formerly 408MUL ▼

1-1/8 x 6

408-0	Oak	S
--------------	-----	---

408P	Poplar	S
-------------	--------	---

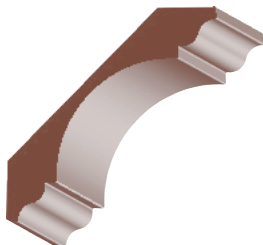
408C	Cherry	N/S
-------------	--------	-----

408MH	Mahogany	N/S
--------------	----------	-----

408MP	Maple	N/S
--------------	-------	-----

1-1/4 x 6

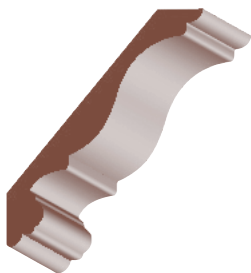
PR408FJ	Primed FJ Pine	N
----------------	----------------	---



Regal Crown

1 x 6-1/4

435MUL	Ultralight MDF	N/S
---------------	----------------	-----



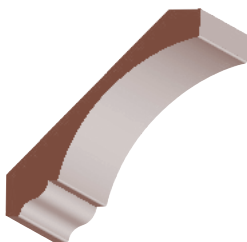
Rafael Crown

3/4 x 6-1/4

411MUL-6	Ultralight MDF	N/S
-----------------	----------------	-----

1-1/16 x 6-5/16

PR411FJ-6	Primed FJ Pine	N/S
------------------	----------------	-----

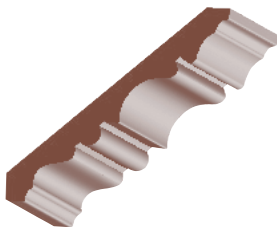


Ogee Crown

7/8 x 6

462MUL-6	Ultralight MDF	N
-----------------	----------------	---

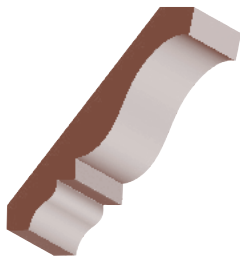
NEW



Fredericksburg Crown

11/16 x 6-1/4

CR841P	Poplar	S
---------------	--------	---



Cape Cod Crown

11/16 x 6-3/8

PR448FJ-6	Primed FJ Pine	N
------------------	----------------	---

3/4 x 6-7/16

448MUL	Ultralight MDF	N/S
---------------	----------------	-----

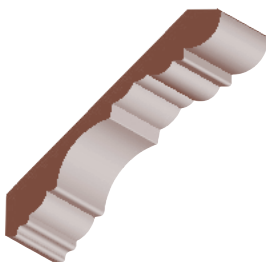
CROWN & CORNICE

**Colonial Crown**

9/16 x 6-1/2

416MUL Ultralight MDF N/S

3/4 x 6-1/2

416P Poplar N/S**Coronado/
Georgian Crown**

3/4 x 6-1/2

427MUL Ultralight MDF S

7/8 x 6-1/2

427-0 Oak N/S

Formerly 447-0 ▲

427P Poplar N/S

Formerly 447P ▲

427ALD Alder N/S

Formerly 447ALD ▲

427C Cherry N/S

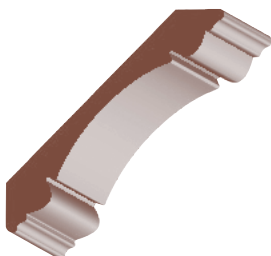
Formerly 447C ▲

427MH Mahogany N/S

Formerly 447MH ▲

427MP Maple N/S

Formerly 447MP ▲

**Double Bead
Carolina Crown**

1 x 6-1/2

424MUL-6 Ultralight MDF N/S

Formerly 424MUL ▼

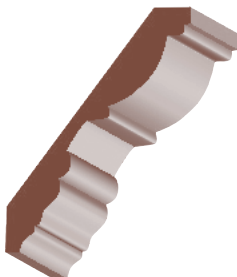
1-1/8 x 6-1/2

424-06 Oak N**424P-6** Poplar N/S

Formerly 424P ▼

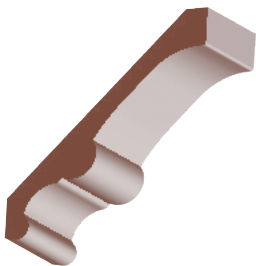
424ALD-6 Alder N/S

Formerly 424ALD ▼

424KA-6 KnottyAlder N**424C-6** Cherry N**424MH-6** Mahogany N**424MP-6** Maple N**Monterey Crown**

7/8 x 6-1/2

PR430FJ-6 Primed FJ Pine N/S



Single Beaded Crown

7/8 x 6-1/2

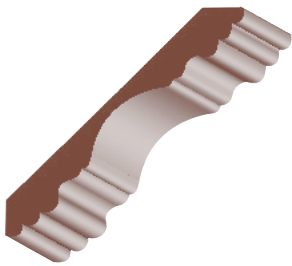
443P Poplar N

7/8 x 6-9/16

443MUL Ultralight MDF N/S

Formerly 431MUL ▼

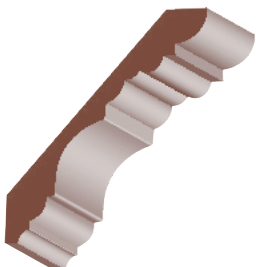
PR443FJ Primed FJPine N



Santa Clara Crown

13/16 x 6-7/8

437MUL Ultralight MDF N/S



Coronado Crown

7/8 x 6-9/16

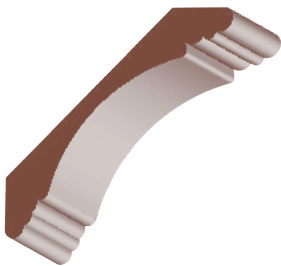
447MUL Ultralight MDF N



Reale Crown

1-1/4 x 6-7/8

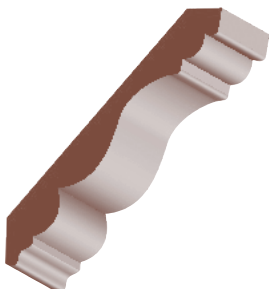
456P Poplar N



Del Mar Crown

1-3/16 x 6-3/4

433MUL Ultralight MDF S

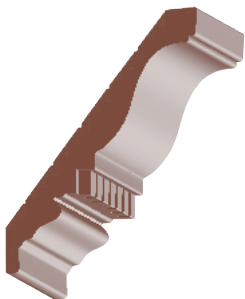


Bel-Air Crown

13/16 x 7

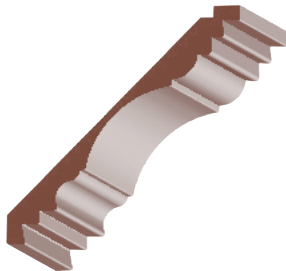
CR800P Poplar N/S

CROWN & CORNICE

**Dentil Crown**

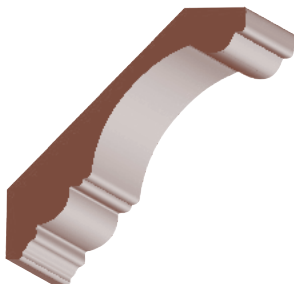
13/16 x 7

CR862-0	Oak	S
CR862P	Poplar	N/S

**Classic Crown**

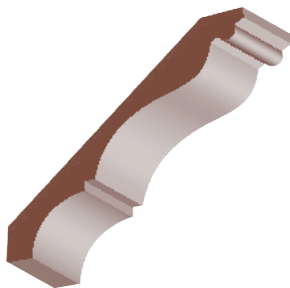
11/16 x 7

415MUL	UltralightMDF	S
--------	---------------	---

**King George Crown**

1-1/4 x 7-1/4

465LDF-7	Light DensityLDF	S
----------	------------------	---

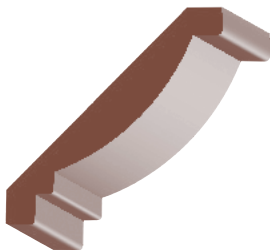
**Beaded Colonial Crown**

3/4 x 7-1/8

417B-0	Oak	S
--------	-----	---

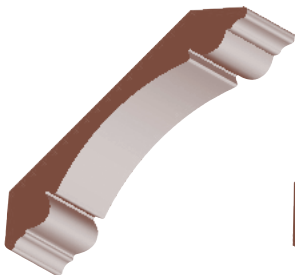
3/4 x 7-1/4

417BALD	Alder	N/S
417BC	Cherry	S
417BMH	Mahogany	S
417BMP	Maple	S

**Tahoe Crown**

1 x 7-1/4

462VG	VG DougFir	N/S
-------	------------	-----



**Double Bead
 Carolina Crown**

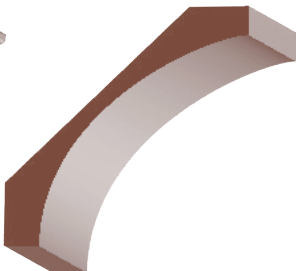
1 x 7-3/16

424LDF-7	Light Density LDF	N
-----------------	-------------------	---

1-1/8 x 7-3/16

424MUL-7	Ultralight MDF	N/S
-----------------	----------------	-----

PR424FJ-7	Primed FJ Pine	N/S
------------------	----------------	-----



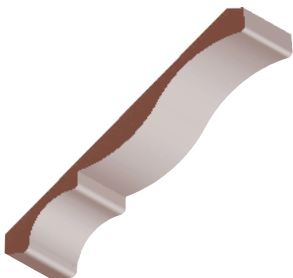
Contemporary Crown

1-3/16 x 7-1/4

444MUL-7	Ultralight MDF	N/S
-----------------	----------------	-----

Formerly 445MUL ▲▼

CROWN & CORNICE



Colonial Crown

9/16 x 7-1/4

417MUL	Ultralight MDF	N/S
---------------	----------------	-----

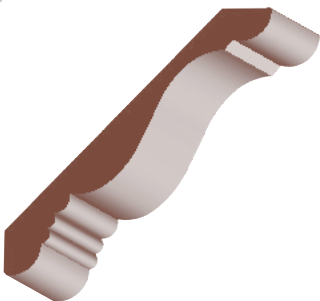
3/4 x 7-1/4

417P	Poplar	N/S
-------------	--------	-----

417ALD	Alder	S
---------------	-------	---

7/8 x 7-1/4

PR417FJ	Primed FJ Pine	N/S
----------------	----------------	-----



Large Charleston Crown

1 x 8

410MUL-8	Ultralight MDF	N/S
-----------------	----------------	-----

Formerly 450MUL ▲▼

410P-8	Poplar	N/S
---------------	--------	-----

Formerly 450P ▲▼

410C-8	Cherry	S
---------------	--------	---

Formerly 450C ▼

410MH-8	Mahogany	S
----------------	----------	---

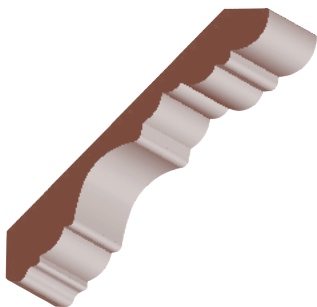
Formerly 450MH ▼

410MP-8	Maple	S
----------------	-------	---

Formerly 450MP ▼



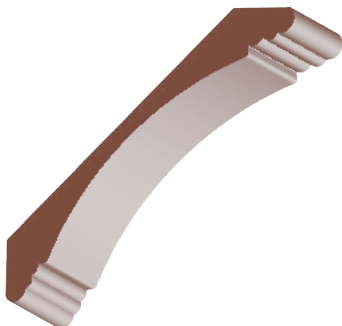
CROWN & CORNICE



**Coronado/
Georgian Crown**

1-1/16 x 8

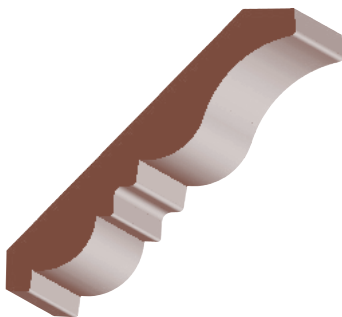
428MUL UltralightMDF N/S



Del Mar Crown

1-3/16 x 8-1/2

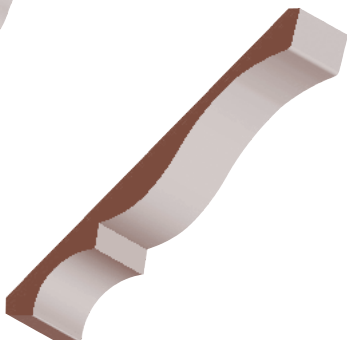
454MUL UltralightMDF S



Corona Crown

1-3/16 x 8-1/2

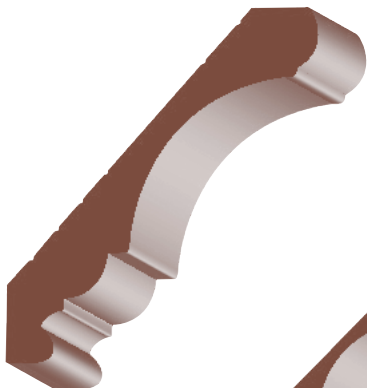
432MUL UltralightMDF N/S



Colonial Crown

11/16 x 8-7/8

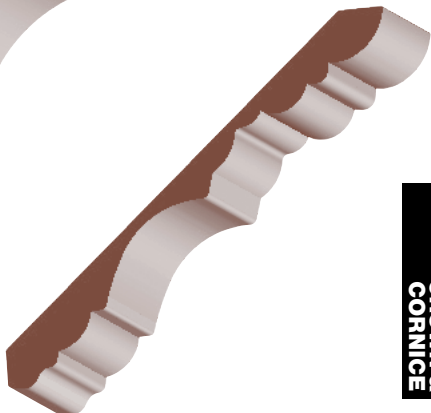
449MUL UltralightMDF N/S



Hampton Crown

1-5/8 x 9-5/8

437P Poplar S



**Coronado/
Georgian Crown**

1 x 11-1/4

429MUL Ultralight MDF N/S

**CROWN &
CORNICE**

DENTIL MOULD



Small Dentil Mould

5/8 x 1/2

DE73P Poplar N/S



Large Dentil Mould

15/16 x 5/8

DE74P Poplar N/S



Dentil Mould

1/2 x 1/2

DE168P Poplar S



Dentil Mould

3/4 x 1

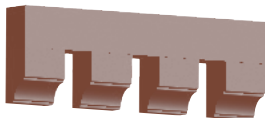
DE169P Poplar S



Dentil Mould

5/8 x 1-1/2

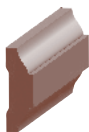
DE170P Poplar S



Dentil Mould

3/4 x 2

DE171-0 Oak S
 DE171P Poplar S

**CHAIR RAIL****Chair Rail**

1/2 x 1-1/2

650SP Solid Pine S

**Colonial Chair Rail**

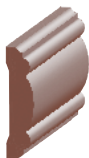
11/16 x 2-1/2

652SP Solid Pine S

**Bolection Chair Rail**

1 x 3

648MUL Ultralight MDF N/S

**Bead & Barrel
Chair Rail**

1/2 x 2

648-0 Oak S

648P Poplar S

**Beaded Chair Rail**

1/2 x 2-7/8

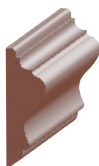
658-0 Oak S

Formerly 654-0 ▼

**Coronado Casing/
Chair Rail**

5/8 x 2-5/8

145SP Solid Pine N

CHAIR RAIL**Chair Rail**

11/16 x 2-1/8

PR657FJ Primed FJ Pine N

**Chair Rail with 3/8" Rab't**

13/16 x 2-5/8

659-0 Oak N

659P Poplar N

**Bead & Barrel
Chair Rail**

11/16 x 3

649FJ FJ Pine S

3/4 x 3

649MUL Ultralight MDF N/S

649P Poplar N/S

649ALD Alder S

**Chair Rail**

9/16 x 2

651BSP Solid Pine N

9/16 x 2-1/2

651MUL Ultralight MDF N/S

PR651FJ Primed FJ Pine N/S

651FJ FJ Pine S

651SP Solid Pine S

1/2 x 2-1/2

651-0 Oak N/S

**Colonial Chair Rail**

9/16 x 2-5/8

655MUL Ultralight MDF N/S

5/8 x 2-5/8

PR655FJ Primed FJ Pine N

655-0 Oak N/S

Formerly 652-0 ▼

655P Poplar N



CHAIR RAIL



Colonial Chair Rail

11/16 x 3

653MUL UltralightMDF N/S

PR653FJ PrimedFJPine N/S

653FJ FJPine N

3/4 x 3

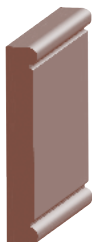
653-O Oak N/S

653P Poplar S

653C Cherry N/S

653MH Mahogany N/S

653MP Maple N/S



Chair Rail Backer

with 2-9/16" Face

9/16 x 3-1/2

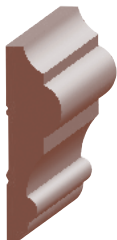
PR670FJ PrimedFJPine S



Chair Rail Backer

9/16 x 4-3/8

PR671FJ PrimedFJPine S



Malibu Chair Rail

1 x 3-1/2

647MUL UltralightMDF N/S



Traditional Chair Rail

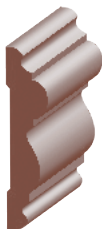
5/8 x 4-1/2

656MUL UltralightMDF N/S

Chair Rail with 1/2" Rab't

3/4 x 3

654P Poplar S



Chair Rail

3/4 x 3-1/4

656P Poplar S



Victorian Casing/ Chair Rail

11/16 x 4-1/4

184-O Oak S

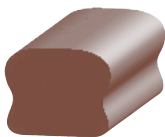


Chair Rail with 3-1/4" Face

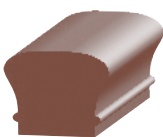
11/16 x 5

693P Poplar N

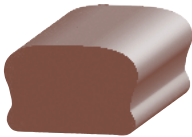
CHAIR RAIL

**HANDRAIL****Small Handrail**

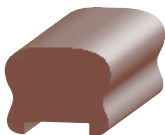
1-1/2 x 1-7/8

F926 Doug Fir S
Formerly 926 ▼**Small #6010 Handrail**

1-1/2 x 1-7/8

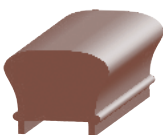
F932 Doug Fir S
Formerly 932 ▼
932P Poplar S**Standard Handrail**

1-1/2 x 2-3/8

F925 Doug Fir S
Formerly 925 ▼
925-0 Oak S**Small Handrail**

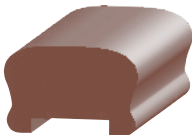
with 1/4" x 1-1/4" Plow

1-1/2 x 1-7/8

F926PL Doug Fir S
Formerly 926P ▼**Small #6010 Handrail**

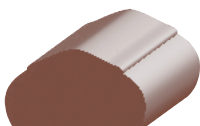
with 1/4" x 1-1/8" Plow

1-1/2 x 1-7/8

F932PL Doug Fir S
Formerly 932P ▼
932PPL Poplar S**Standard Handrail**

with 1/4" x 1-1/4" Plow

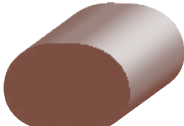
1-1/2 x 2-3/8

F925PL Doug Fir S
Formerly 925P ▼
925-OPL Oak S**HANDRAIL****\"B\" Mushroom Handrail**

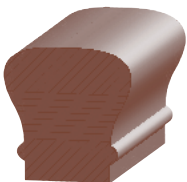
1-3/8 x 2-3/8

928-0 Oak S

1-1/2 x 2-1/2

F928 Doug Fir S
Formerly 928 ▼**Oval Handrail**

1-1/2 x 2-1/4

F927 Doug Fir S
Formerly 927 ▼**#6010 Handrail**

2-1/4 x 2-3/8

931P Poplar S

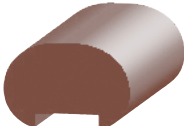
**\"B\" Mushroom Handrail**

with 1/4" x 1-1/4" Plow

1-3/8 x 2-3/8

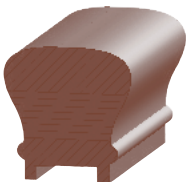
928-OPL Oak S

1-1/2 x 2-1/2

F928PL Doug Fir S
Formerly 928P ▼**Oval Handrail**

with 1/4" x 1-1/8" Plow

1-1/2 x 2-1/4

F927PL Doug Fir S
Formerly 927P ▼**#6010 Handrail**

with 1/4" x 1-1/4" Plow

2-1/4 x 2-3/8

931PPL Poplar S



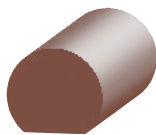
HANDRAIL



Majestic Handrail

1-3/4 x 2-5/8

933P	Poplar	S
-------------	--------	---



Flat Bottom Handrail

1-1/2 x 1-11/16

951R	Redwood	N
F951FJ	FJ Doug Fir	N

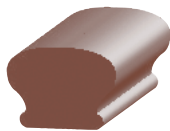


Majestic Handrail

with 1/4" x 1-1/4" Plow

1-3/4 x 2-5/8

933PPL	Poplar	S
---------------	--------	---



Mushroom Handrail

1-7/16 x 1-15/16

F955	Doug Fir	N
955R	Redwood	N

1-3/8 x 2-3/16

F956FJ	FJ Doug Fir	N
F956	Doug Fir	N

1-5/8 x 2-3/8

956-0	Oak	N
--------------	-----	---



Handrail Brackets

3/8 x 5/8

BHB	Brass Plated	N/S
ABHB	Antique Brass	S
CHB	Chrome Plated	N/S



Fillet

3/8 x 1-1/4

951-0	Oak	S
951P	Poplar	S



Shoe Rail

with 1/4" x 1-1/4" Plow

3/4 x 2-1/2

950-0	Oak	S
950P	Poplar	S

HANDRAIL

APRON



Apron

5/8 x 2-1/4

PR904FJ	Primed FJ Pine	N/S
----------------	----------------	-----



Apron

3/8 x 1-1/2

902FJ	FJ Pine	S
--------------	---------	---



Flat Base/Apron

7/16 x 1-1/2

301FJ	FJ Pine	N/S
--------------	---------	-----

**PANEL MOULD****Panel Mould**

3/8 x 5/8

600SP Solid Pine N/S**600-O** Oak S

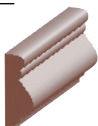
9/16 x 3/4

PR600FJ Primed FJ Pine N/S

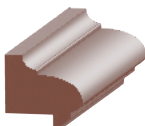
5/8 x 3/4

601SP Solid Pine N/S**601-O** Oak S

3/4 x 1

PR602FJ Primed FJ Pine N/S**602SP** Solid Pine N/S**602-O** Oak N/S**602ALD** Alder N/S**Panel Mould**

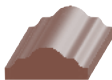
7/16 x 1-1/8

PR609FJ Primed FJ Pine N/S**Panel Mould with 3/4" Rab't**

1-1/8 x 1-3/16

623P Poplar N**Pencil Mould**

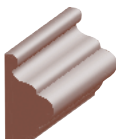
3/4 x 3/4

680P Poplar N**Panel Mould**

1/2 x 1-1/4

629P Poplar S**Mantel Panel Mould**

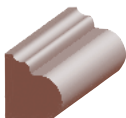
5/8 x 7/8

635-O Oak S**635P** Poplar S**Panel Mould**

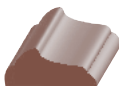
3/4 x 1-5/16

631-O Oak S**631P** Poplar S**631ALD** Alder S**631C** Cherry S**631MH** Mahogany S**631MP** Maple S**Panel Mould**

3/8 x 1-1/8

604SP Solid Pine S**Panel Mould**

7/8 x 1

630-O Oak S**630P** Poplar S**630ALD** Alder S**630C** Cherry S**630MH** Mahogany S**630MP** Maple S**Panel Mould**

9/16 x 1-3/8

606SP Solid Pine N/S**606-O** Oak S**Flat Astragal/
Panel Mould**

11/16 x 1-5/8

660MUL Ultralight MDF S**PR660FJ** Primed FJ Pine S**660FJ** FJ Pine S**660SP** Solid Pine S

3/4 x 1-5/8

660VG VG Doug Fir S**660-O** Oak S**660P** Poplar S**660ALD** Alder S**660C** Cherry S**660MH** Mahogany S**660MP** Maple S**Flat Astragal/
Panel Mould**

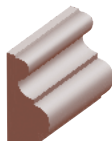
11/16 x 1-5/8

PR646FJ Primed FJ Pine N**646SP** Solid Pine N**646VG** VG Doug Fir N

3/4 x 1-5/8

646-O Oak N**646P** Poplar N**646ALD** Alder N**646C** Cherry N

11/16 x 1-3/4

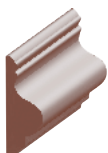
646MUL Ultralight MDF N/S**Panel Mould**

11/16 x 1-3/8

PR603FJ Primed FJ Pine N/S



PANEL MOULD



Panel Mould

9/16 x 1-1/2

PR601FJ Primed FJ Pine N



Picture Mould

11/16 x 1-3/4

PR916FJ Primed FJ Pine N/S

3/4 x 1-3/4

916SP Solid Pine N



Panel Mould

3/4 x 2

618P Poplar S



Panel or Brick Mould

1-1/16 x 1-1/2

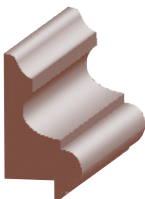
603SP Solid Pine S



Panel Mould

11/16 x 1-3/4

PR604FJ Primed FJ Pine N/S



Raised Panel Mould

with 3/4" Rab't

1-3/16 x 2-3/16

611P Poplar N



Panel Mould

11/16 x 1-5/8

PR605FJ Primed FJ Pine S

605FJ FJ Pine S

605-0 Oak S

3/4 x 1-5/8

605SP Solid Pine N/S

605ALD Alder N/S



Beauty Mould

3/4 x 1-7/8

608SP Solid Pine S

608-0 Oak S



Decorative Panel Mould

1-3/8 x 3-1/4

611SP Solid Pine S



#1139 Picture Mould

11/16 x 1-5/8

905SP Solid Pine S



Decorative Panel Mould

1 x 2

610SP Solid Pine S



Beauty Mould

5/8 x 1-5/8

607SP Solid Pine S

**PANEL MOULD
& PANEL CAP**

**PANEL CAP****Base or Panel Cap**

9/16 x 3/4

612-0	Oak	N
612P	Poplar	N
612ALD	Alder	N
612C	Cherry	N
612MH	Mahogany	N
612MP	Maple	N

**Base Cap**

9/16 x 3/4

224	Bodyguard	N/S
-----	-----------	-----

**Base Cap**

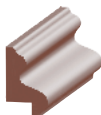
9/16 x 3/4

615SP	Solid Pine	N
-------	------------	---

**Panel Cap with 3/4" Rab't**

9/16 x 1-1/8

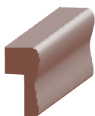
624SP	Solid Pine	N
624-0	Oak	S

**Raised Panel Cap**

with 1/2" Rab't

3/4 x 1-1/4

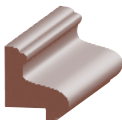
632-0	Oak	S
632P	Poplar	S
632ALD	Alder	S
632C	Cherry	S
632MH	Mahogany	S
632MP	Maple	S

**Wainscot Cap**

with 1/4" Rab't

5/8 x 1-1/4

731SP	Solid Pine	S
-------	------------	---

**Raised Panel Cap**

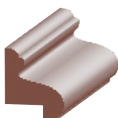
with 1/4" x 3/4" Rab't

1-1/8 x 1-1/4

613SP	Solid Pine	N/S
-------	------------	-----

613-0	Oak	N/S
-------	-----	-----

613P	Poplar	S
------	--------	---

**Panel Cap**

with 1/4 x 11/16" Rab't

1-1/16 x 1-5/16

739MUL	Ultralight MDF	N/S
--------	----------------	-----

**Coronado Base/
Panel Cap**

11/16 x 1-3/8

PR614FJ	Primed FJ Pine	N/S
---------	----------------	-----

614SP	Solid Pine	N/S
-------	------------	-----

614-0	Oak	N/S
-------	-----	-----

614P	Poplar	N/S
------	--------	-----

614ALD	Alder	N
--------	-------	---

614C	Cherry	N/S
------	--------	-----

614MH	Mahogany	N/S
-------	----------	-----

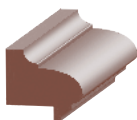
614MP	Maple	N/S
-------	-------	-----

**Wainscot Cap**

with 1/4" x 3/8" Rab't

7/16 x 1-3/8

623SP	Solid Pine	N
-------	------------	---

**Panel Cap**

with 1/4" x 3/4" Rab't

1-3/16 x 1-3/8

PR626FJ	Primed FJ Pine	N/S
---------	----------------	-----

**Decorative Base Cap**

11/16 x 1-1/2

628-0	Oak	S
-------	-----	---

628P	Poplar	S
------	--------	---

628C	Cherry	S
------	--------	---

628MH	Mahogany	S
-------	----------	---

628MP	Maple	S
-------	-------	---

**Panel Cap with 3/8" Rab't**

3/4 x 1-1/2

620FJ	FJ Pine	S
-------	---------	---

620SP	Solid Pine	N/S
-------	------------	-----

**Panel Cap with 1/8" Rab't**

1/2 x 1-1/2

730SP	Solid Pine	S
-------	------------	---

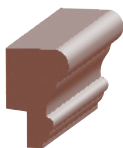


PANEL CAP



Panel Cap with 1/2" Rab't
 1/2 x 1-1/2

730-0 Oak S



Panel Cap
 with 5/16 x 5/8" Rab't
 1-1/8 x 1-3/4

738MUL Ultralight MDF N/S



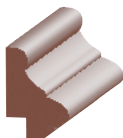
Large Panel Cap

11/16 x 2 with 3/16" x 1-3/8" Rab't

PR625FJ Primed FJ Pine N

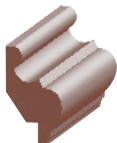
3/4 x 2 with 1/4" x 1-3/8" Rab't

625SP Solid Pine N



Panel Cap with 3/8" Rab't
 1-1/8 x 1-5/8

732-0 Oak S



Panel Cap with 1/2" Rab't
 3/4 x 1-3/4

620-0 Oak N/S

620P Poplar N/S

620ALD Alder N/S

620C Cherry N/S

620MH Mahogany N/S

620MP Maple N/S



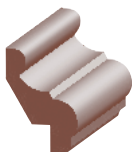
Panel Cap
 with 1/4" x 1/2" Rab't
 3/4 x 2

737MUL Ultralight MDF N/S



Base Cap
 3/4 x 1-11/16

625P Poplar S



Panel Cap with 3/4" Rab't
 3/4 x 2

PR621FJ Primed FJ Pine S

621C Cherry N/S

621MP Maple N/S

621MH Mahogany N/S

13/16 x 2

621-0 Oak N/S

621P Poplar N/S

621ALD Alder N/S



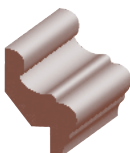
Panel Cap with 3/4" Rab't
 1-3/16 x 2

733MUL Ultralight MDF N/S



Panel Cap with 1/4" Rab't
 11/16 x 1-3/4

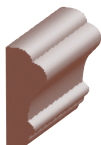
616P Poplar N/S



Coronado Wainscot Cap
 with 3/8" x 5/8" Rab't
 11/16 x 2-1/8

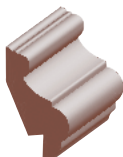
PR620BFJ Primed FJ Pine N/S

Formerly PR620FJ ▲



Panel Cap
 11/16 x 1-3/4

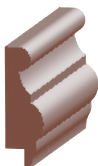
617P Poplar N/S



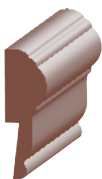
Panel Cap with 1/2-5/8" Rab't
 1-1/8 x 2

615P Poplar N/S

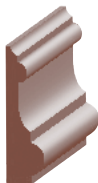
PANEL MOULD
 & PANEL CAP

**PANEL CAP****Coronado Wainscot Cap** with 3/8" Rab't

11/16 x 2-1/8

620VG VG Doug Fir N/S**Panel Cap** with 1/4" Rab't

3/4 x 2-5/16

622P Poplar S**Victorian Cap**

11/16 x 2-7/16

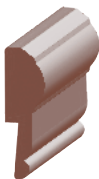
PR628FJ Primed FJ Pine N/S**Wainscot Cap**

with 3/8" Rab't

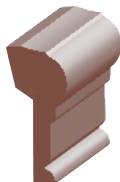
9/16 x 2-1/4

729LDF Light Density LDF S**729BP** Poplar N

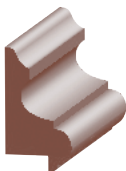
Formerly 667P ▲

**Panel Cap** with 1/4" x 1" Rab't

3/4 x 2-5/16

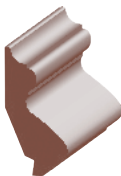
PR734FJ Primed FJ Pine N**Panel Cap** with 3/8" Rab't

1 x 2-1/2

734MUL Ultralight MDF N/S**Raised Panel**

with 5/16" x 3/4" Rab't

1-3/16 x 2-3/16

PR613FJ Primed FJ Pine N/S**Panel Cap** with 9/16" Rab't

11/16 x 2-3/8

619P Poplar S**Contemporary Panel Cap**

with 5/8" Rab't

1 x 2-1/2

PR740FJ Primed FJ Pine N/S**740LDF** Light Density LDF N/S**NEW****T&G Cap** with 1/4" Rab't

3/4 x 2-5/16

622ALD Alder N/S**Colonial Cap**

11/16 x 2-3/8

PR627FJ Primed FJ Pine N/S**Craftsman Cap**

for 9/16" Wainscot

1-9/16 x 2-1/2

PR623FJ Primed FJ Pine N/S**623VG** VG Doug Fir N/S**NEW****PANEL MOULD & PANEL CAP**



BEAD & SCREEN MOULDS

BEAD MOULD



Ovolo Sticking

3/8 x 3/8

599VG VG Doug Fir N/S



Glass Bead

3/8 x 3/8

597SP Solid Pine N/S



Glass Bead

1/4 x 7/16

596SP Solid Pine S



Insert Screen

3/16 x 1/2

590SP Solid Pine N/S



Flush Bead

3/8 x 23/32

581-O Oak S

581MP Maple S



Beveled Flush Bead

1/2 x 23/32

583-O Oak S

583MP Maple S



Flat Screen Mould

1/4 x 3/4

591SP Solid Pine N/S

591-O Oak N/S

591P Poplar N/S



Beaded Screen Mould

1/4 x 3/4

592SP Solid Pine N/S



Scribe Mould

3/16 x 3/4

593SP Solid Pine N/S

593-O Oak N/S

593P Poplar N/S

593ALD Alder N/S

593C Cherry N/S

593MH Mahogany N/S

593MP Maple N/S



Cloverleaf

3/8 x 3/4

594SP Solid Pine N/S

594-O Oak N/S

594P Poplar N/S

594ALD Alder N/S

594C Cherry N/S

594MH Mahogany N/S

594MP Maple N/S



Applied Bead Mould

3/8 x 3/4

598P Poplar N



Parting Bead Mould

3/8 x 3/4

901SP Solid Pine N/S



Beveled Full-Lip Bead

3/4 x 1

580-O Oak S

580MP Maple S



Flat Hoffco

3/8 x 1

903SP Solid Pine S



Flat Full-Lip Bead

3/4 x 1-1/16

582-O Oak S

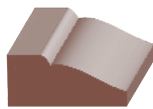
582MP Maple S



Drip Mould

3/4 x 1-1/4

904SP Solid Pine S



Band Mould

11/16 x 1-5/8

900SP Solid Pine S

**ASTRAGALS****Flat Astragal/
Panel Mould**

11/16 x 1-5/8

660MUL	Ultralight MDF	S
PR660FJ	Primed FJ Pine	S
660FJ	FJ Pine	S
660SP	Solid Pine	S
3/4 x 1-5/8		
660VG	VG Doug Fir	S
660-O	Oak	S
660P	Poplar	S
660ALD	Alder	S
660C	Cherry	S
660MH	Mahogany	S
660MP	Maple	S

**Flat Astragal/
Panel Mould**

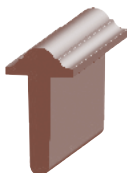
11/16 x 1-5/8

PR646FJ	Primed FJ Pine	N
646SP	Solid Pine	N
646VG	VG Doug Fir	N
3/4 x 1-5/8		
646-O	Oak	N
646P	Poplar	N
646ALD	Alder	N
646C	Cherry	N
11/16 x 1-3/4		
646MUL	Ultralight MDF	N

**T-Astragal
for 1-3/8" Doors**

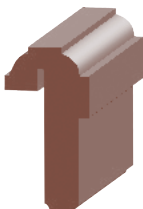
1-1/4 x 2

662FJ	FJ Pine	N/S
662SP	Solid Pine	N/S
662VG	VG Doug Fir	N/S
662-O	Oak	N/S
662ALD	Alder	N/S
662C	Cherry	N

**ASTRAGALS &
WEATHERSTRIP****T-Astragal
for 1-3/4" Doors**

1-1/4 x 2-1/4

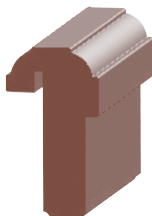
661FJ	FJ Pine	S
661SP	Solid Pine	S
661VG	VG Doug Fir	N/S
661-O	Oak	N/S
661P	Poplar	N/S
661ALD	Alder	N/S
661C	Cherry	N
661MH	Mahogany	N/S

**T-Astragal with
Weatherstrip Kerf**

for 1-3/4" Doors

1-1/2 x 2-7/8

663VG	VG Doug Fir	N/S
1-3/8 x 3		
663-O	Oak	N/S
663QWO	Qtr.Sawn White Oak	S
663P	Poplar	N/S
663ALD	Alder	N/S
663C	Cherry	N
663MH	Mahogany	N/S
663SMH	Sapele Mahogany	S
663WL	Walnut	N/S

**Thick T-Astragal with
Weatherstrip Kerf**

for 1-3/4" Doors

1-5/8 x 3

663BVG	VG Doug Fir	S
663B-O	Oak	S
663BP	Poplar	S
663BALD	Alder	S
663BMH	Mahogany	S

Q-LON® WEATHERSTRIP

For additional Q-Lon options, see page 96.

**Q-Lon for T-Astragals**

5/8 x 13/16

TQ7W	White (81")	N/S
TQ8W	White (97")	N/S
TQ7B	Bronze (81")	N/S
TQ8B	Bronze (97")	N/S



ASTRAGALS



Contemporary T-Astragal with Weatherstrip Kerf

for 1-3/4" Doors

1-1/2 x 3-1/8

NEW

667VG	VG Doug Fir	N/S
667QWO	Qtr. Sawn White Oak	N/S
667P	Poplar	N/S
667SMH	Sapele Mahogany	N/S
667WL	Walnut	N/S



T-Astragal with Weatherstrip Kerf

for 2-1/4" Doors

1-1/2 x 3-3/8

664VG	VG Doug Fir	N/S
--------------	-------------	-----

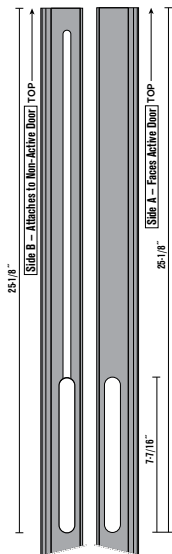


Composite T-Astragal

1-1/2 x 3-1/4

PFAST8	PolyFiber	N/S
<i>Formerly PCAST8 ▲▼</i>		
WGST8	Oak Woodgrain PolyFiber	N/S

ASTRAGALS & WEATHERSTRIP



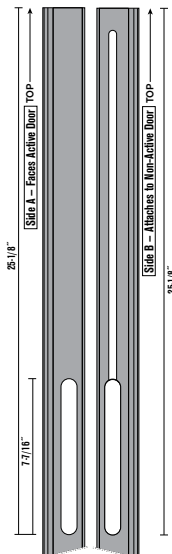
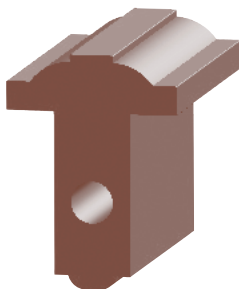
Left Hand T-Astragal

for 1-3/8" Door & Prepped for 7" WW Flush Bolt

1-1/2 x 2 x 8'

NEW

665FJ-LH	FJPine	S
-----------------	--------	---



Right Hand T-Astragal

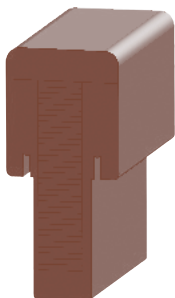
for 1-3/8" Door & Prepped for 7" WW Flush Bolt

1-1/2 x 2 x 8'

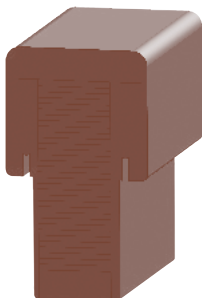
NEW

665FJ-RH	FJPine	S
-----------------	--------	---



**MULL POSTS & COVER****Mull Post**

1 x 2 x 4-3/8

PGLVL438MULL8 PrimedLVL N/S**Fat Boy Mull Post**

1-1/2 x 2-1/2 x 4-3/8

PGLVL212MULL8 PrimedLVL N/S**Mull Cover**

1 x 2

PFMULLC8 PolyFiber N/SFormerly **PCMULLC8** ▲▼**WGMULLC8** Oak Woodgrain PolyFiber N/S**NOSE & COVE****Cove**

3/8 x 3/8

520SP SolidPine S

1/2 x 1/2

521SP SolidPine N/S**521-O** Oak S**521P** Poplar N/S**521ALD** Alder N/S**521C** Cherry N/S**521MH** Mahogany N/S**521MP** Maple N/S

5/8 x 5/8

522SP SolidPine S

11/16 x 11/16

PR523FJ PrimedFJPine N/S**523FJ** FJPine S**523VG** VGDougFir N/S**606**  Bodyguard N/S

3/4 x 3/4

523SP SolidPine N/S**523R** Redwood N**523-O** Oak N/S**523P** Poplar N/S**523ALD** Alder N/S**523C** Cherry N/S**523MH** Mahogany N/S**523MP** Maple N/S

1 x 1

524SP SolidPine N/S**Decorative Cove**

3/4 x 3/4

528SP SolidPine N**Linoleum Cove**

7/16 x 1-1/4

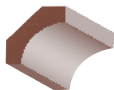
527SP SolidPine S

5/8 x 1-1/2

527BSP SolidPine NFormerly **527SP** ▲



NOSE & COVE



Sprung Cove

5/8 x 1-5/8

525SP Solid Pine S

11/16 x 1-3/4

525BSP Solid Pine N

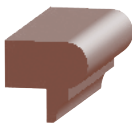
Formerly 525SP ▲



Bead & Nose Cove

1-1/4 x 1-3/4

024  Bodyguard N/S

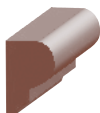


Nose & Cove with

11/16" x 7/8" Rab't

1-3/4 x 1-3/4

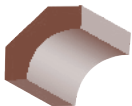
PR910BFJ Primed FJ Pine N



Nosing

1-1/8 x 1-7/16

PR913FJ Primed FJ Pine N



Sprung Cove

5/8 x 2-1/4

526SP Solid Pine N/S

Nose & Cove

1 x 1-5/8

909SP Solid Pine N/S

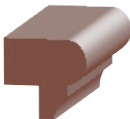
909-O Oak N/S

909P Poplar N/S

909ALD Alder N/S

1-1/4 x 1-3/4

PR909FJ Primed FJ Pine N



Rab't Nose & Cove

1-3/4 x 1-3/4

with 11/16" x 11/16" Rab't

PR910FJ Primed FJ Pine N

1-3/4 x 1-3/4 with 3/4" Rab't

910-O Oak N/S

910P Poplar N/S



Nosing with 1/4" x 2-1/8" Rab't

1-1/16 x 3-1/2

912-O Oak N



Bullnose Stepping

1 x 11-1/4

890VG VG Doug Fir N



Nosing

with 11/16" x 2-1/8" Rab't

1-1/16 x 3-1/2

913-O Oak N

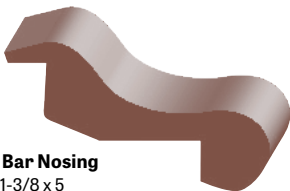


Bar Nosing

1-1/4 x 3-1/2

49-O Oak S

Formerly 049 ▼



Bar Nosing

1-3/8 x 5

50-O Oak S

Formerly 050 ▼

NOSE & COVE

**WINDOW STOOL****Stool**

7/16 x 1-1/8

995P Poplar N/S

**Rab't Stool**

with 1/8" x 1" Rab't

1/2 x 1-7/16

997P Poplar N/S
Formerly 996P ▼**Rab't Stool**

7/8 x 2-1/2

981SP Solid Pine S

7/8 x 3-1/2

982SP Solid Pine S

7/8 x 5-1/2

984SP Solid Pine S

**Window Stool**

1-1/16 x 2

PR996FJ Primed FJ Pine N

996P Poplar N/S

Formerly 997P ▼

**Ogee Window Stool**

11/16 x 4-1/2

990SP Solid Pine N

11/16 x 5-1/2

992SP Solid Pine N

11/16 x 5-7/16

992P Poplar N

**Lintel Mould**

1 x 4-1/2

998MUL Ultralight MDF N/S

1-1/16 x 4-1/2

998P Poplar S

**Raw Beveled Stool**

11/16 x 4-3/4

986LDF Light Density LDF S

11/16 x 6-3/4

987LDF Light Density LDF S

**Flat Stool**

11/16 x 4-3/4

980FJ FJ Pine S

980SP Solid Pine S

11/16 x 5-1/2

979FJ FJ Pine S

979SP Solid Pine S

11/16 x 7-1/4

985FJ FJ Pine S

985SP Solid Pine S



WINDOW STOOL

WINDOW STOOL



Raw Ogee Window Stool

11/16 x 4-1/2		
990FJ	FJPine	N
11/16 x 4-3/4		
990LDF	Light DensityLDF	N/S
11/16 x 5-1/4		
992LDF	Light DensityLDF	N
992FJ	FJPine	N
11/16 x 6-1/2		
993LDF	Light DensityLDF	N
993FJ	FJPine	N
11/16 x 6-3/4		
991LDF	Light DensityLDF	S
11/16 x 7-1/4		
994LDF	Light DensityLDF	N
994FJ	FJPine	N
1-1/4 x 8-1/4		
999LDF	Light DensityLDF	N



Ogee Window Stool

11/16 x 4-1/2		
PR990FJ	Primed FJPine	N
11/16 x 4-3/4		
PR990MUL	Ultralight MDF	N
PR990LDF	Light DensityLDF	N
11/16 x 5-1/4		
PR992MUL	Ultralight MDF	N
PR992LDF	Light DensityLDF	N
PR992FJ	Primed FJPine	N
11/16 x 6-1/2		
PR993MUL	Ultralight MDF	N
PR993LDF	Light DensityLDF	N
11/16 x 7-1/4		
PR994MUL	Ultralight MDF	N
PR994LDF	Light DensityLDF	N
PR994FJ	Primed FJPine	N
1-3/16 x 8-1/4		
PR999MUL	Ultralight MDF	N



Thick Beveled Stool

1 x 4-3/4		1 x 7-1/4	
976LDF	Light DensityLDF	N/S	977LDF
Formerly 988LDF ▼			Light DensityLDF
			N/S
			Formerly 989LDF ▼



Rab't Beveled Stool

1 x 6-3/4		1-1/4 x 6-3/4	
978VG	VG Doug Fir	N	978P
			Poplar
			N



Primed Double Ogee Cap

11/16 x 7-1/4		
996LDF	Light DensityLDF	N

**WINDOW STOOL****Primed Bullnose Stool**

1-3/16 x 8-1/4

PR995MUL UltralightMDF N**Raw Bullnose Stool**

1-1/4 x 8-1/4

995LDF LightDensityLDF N**WINDOW STOOL****HOOK & CLEAT****1 Eased Edge Cleat**

9/16 x 1-1/2

10FB Fiberboard N/S**10FJ** FJPine N/S**Shelf Cleat** with 3/8" Rab't

11/16 x 1-5/8

911SP SolidPine N**HOOK & CLEAT****Melamine Hook** 1Edge Banded

5/8 x 3-1/4

MLH Melamine N/S**#2 Common Pine Hook (1x4)**

3/4 x 3-1/2

CH SolidPine N/S**Raw 1 Eased Edge Hookstrip**

9/16 x 3-1/4

15FB Fiberboard N/S**15FJ** FJPine N/S**Hookstrip** with 5/16" x 3/4" Rab't

11/16 x 4-1/2

16FJ FJPine N**CLOSET & SHELVING**



CLOSET & SHELVING



Plastic Shelf Supports (Sold 12/bag)
 5/8 x 7/16 x 3/8 with 5/16" pin
SS N/S



Chrome Oval Pole (18 Gauge)
 5/16 x 1-3/16
CPO Chrome N/S



Chrome Round Pole (16 Gauge)
 1-1/16"
CPR Chrome N/S



Chrome Oval Pole Supports
 (for use with oval pole only)
 5/16 x 1-3/16
CPS-O Chrome N/S



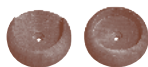
Chrome (Nickel) Rosettes for Oval Pole (Sold in pairs)
 2-13/16 x 13/16 x 1/2 with 5/16" mounting pins
CRO Chrome N/S



Chrome (Nickel) Rosettes for Round Pole (Sold in pairs)
 2-1/2 x 1-5/8 x 1
CRR Chrome N/S



Plastic Closet Pole Rosettes (Sold in pairs)
 2-1/16 x 2-1/16 x 3/4
PR Plastic N/S



Wood Closet Pole Rosettes (Sold in pairs)
 2 x 2 x 5/8
WR Wood N/S



White Plastic Pole Cover for 1-1/4" or 1-3/8" Full Rounds
 Available in 12' Lengths
PC Plastic N/S



Swivel End Shelving Bracket
 12-1/2 x 10-1/8
4700 N/S



Shelving Bracket
 12-3/4 x 9-5/8
4750 N/S



Heavy Duty Shelving Bracket
 12-5/8 x 10-3/8
4800 N/S



Edge Banding
 5/8" x 250'
EB1 S
 3/4" x 250'
EB2 N/S



Aromatic Cedar T&G Closet Lining
 5/16 x 3-7/8
3CL Cedar S
 5/16 x 4-7/8
4CL Cedar S

CLOSET & SHELVING

**SHELVING****Bullnose Edge Shelving**

11/16 x 11-1/4	5/8 x 11-1/4	3/4 x 11-1/4
11MDF-BN MDF N/S	11PB ParticleBoard S	11PB-BN ParticleBoard N
11/16 x 15-1/4	5/8 x 15-1/4	16PB ParticleBoard S
12MDF-BN MDF S	12PB ParticleBoard S	3/4 x 15-1/4
16MDF-BN MDF N	5/8 x 23-1/4	16PB-BN ParticleBoard N
11/16 x 23-1/4	13PB ParticleBoard S	17PB ParticleBoard S
24MDF-BN MDF N/S		3/4 x 23-1/4
		24PB-BN ParticleBoard N
		18PB ParticleBoard S

**Flat Edge Shelving**

11/16 x 11-1/4	11/16 x 23-1/4	3/4 x 11-1/4	#2 Common Pine Shelving
11MDF-F MDF N	13MDF-F MDF S <i>Formerly 13MDF ▼</i>	11PB-F ParticleBoard N	
11/16 x 15-1/4	11/16 x 30-1/2	3/4 x 16	11/16 x 11-1/4
16MDF-F MDF N	30MDF-F MDF N	16PB-F ParticleBoard N	PS Solid Pine S
		3/4 x 24	
		24PB-F ParticleBoard N	

**2 Eased Edge One Side Shelving**

11/16 x 11-1/4	11/16 x 15-1/4
11MDF-2E MDF S <i>Formerly 11MDF ▼</i>	12MDF-2E MDF S <i>Formerly 12MDF ▼</i>

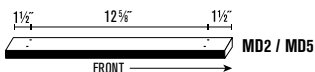
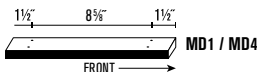
Melamine Shelving

MS1 5/8 x 11-1/4 S	MS4 3/4 x 11-1/4 N (Available Lengths: 8', 12')
MS2 5/8 x 15-3/4 S	MS5 3/4 x 15-1/4 N (Available Lengths: 8', 12')
MS3 5/8 x 23-1/4 S	MS6 3/4 x 23-1/4 N (Available Lengths: 8', 12')

**Melamine Pre-Drilled Dividers**

All dividers are pre-drilled, all the way through. Holes are 3/16" diameter (~1/16") and space 1-1/4" apart.

MD1 5/8 x 11-1/2 2Sets of Holes S	MD4 3/4 x 11-1/2 2Sets of Holes N/S
MD2 5/8 x 15-1/2 2Sets of Holes S	MD5 3/4 x 15-1/2 2Sets of Holes N/S
MD3 5/8 x 23-1/2 3Sets of Holes S	MD6 3/4 x 23-1/2 3Sets of Holes N/S

**CLOSET & SHELVING**



WALL CAP



2 Eased Edge Wall Cap

11/16 x 1-1/2			11/16 x 7-1/4		
1098MUL	Ultralight MDF	S	1103MUL	Ultralight MDF	S
1098LDF	Light Density LDF	N/S	1103LDF	Light Density LDF	N/S
11/16 x 2-1/2			1-1/4 x 7-1/4		
1099MUL	Ultralight MDF	S	1104LDF	Light Density LDF	N/S
1099LDF	Light Density LDF	N/S	11/16 x 6-1/2		
11/16 x 3-1/2			11/16 x 11-1/4		
1100MUL	Ultralight MDF	S	1105MUL	Ultralight MDF	S
1100LDF	Light Density LDF	N/S	1105LDF	Light Density LDF	S
11/16 x 5-1/2			11/16 x 11-1/4		
1101MUL	Ultralight MDF	S	1106LDF	Light Density LDF	N/S
1101LDF	Light Density LDF	N/S	1-1/4 x 11-1/4		
1-1/4 x 5-1/2			1-1/16 x 3-1/2		
1102LDF	Light Density LDF	S	1107MUL	Ultralight MDF	S
			1107LDF	Light Density LDF	N/S
			1108MUL	Ultralight MDF	S
			1108LDF	Light Density LDF	N/S

WALL CAP

DOWELS & PLUGS

DOWELS, DOWEL PINS & SCREW HOLE PLUGS



Birch Dowels

Diameter	Part# (36" Length)	Part# (48" Length)	
1/8"	060	060A	S
3/16"	061	061A	S
1/4"	062	062A	S
5/16"	063	063A	S
3/8"	064	064A	S
7/16"	065	065A	S
1/2"	066	066A	S
5/8"	067	067A	S
3/4"	068	068A	S
7/8"	069	069A	S
1"	070	070A	S
1-1/8"	071	071A	S
1-1/4"	072	072A	S



Grooved Dowel Pins

Part#	Diameter	
90DP	1/8"	S
91DP	1/4"	S
92DP	5/16"	S
93DP	3/8"	S
94DP	7/16"	S
95DP	1/2"	S
96DP	3/4"	S



Mushroom Screw Hole Plugs

Part#	Diameter	
95MSP	3/8"	S
Formerly 95MP ▼		
96MSP	1/2"	S
Formerly 96MP ▼		



Cupcake Screw Hole Plugs (Round Head & Flat)

Part#	Diameter	
90CSP	3/8"	S
Formerly 90CP ▼		
91CSP	1/2"	S
Formerly 91CP ▼		

**ROUNDS (QUARTER, HALF & FULL)****Quarter Round**

1/4 x 1/4

500SP Solid Pine N/S

3/8 x 3/8

501SP Solid Pine N/S

1/2 x 1/2

502SP Solid Pine N/S**502-O** Oak N/S**502P** Poplar N/S**502C** Cherry N/S**502MH** Mahogany N/S**502MP** Maple N/S

5/8 x 5/8

503SP Solid Pine N/S

11/16 x 11/16

PR504FJ Primed FJ Pine N/S**504FJ** FJ Pine S**504VG** VG Doug Fir N/S**614**  Bodyguard N/S

3/4 x 3/4

504SP Solid Pine N/S**504R** Redwood N**504-O** Oak N/S**504P** Poplar N/S**504ALD** Alder N/S**504C** Cherry N/S**504MH** Mahogany N/S**504MP** Maple N/S

1 x 1

505SP Solid Pine N/S**Half Round**

1/4 x 1/2

570SP Solid Pine N/S

5/16 x 5/8

571SP Solid Pine N/S

3/8 x 3/4

572SP Solid Pine N/S**572-O** Oak N/S**572P** Poplar N/S**572C** Cherry N/S**572MH** Mahogany N/S**572MP** Maple N/S

1/2 x 1

573SP Solid Pine N/S

5/8 x 1-1/4

574SP Solid Pine S

3/4 x 1-1/2

575P Poplar N/S

1 x 2

576P Poplar N/S**Full Round**

1/2

F806 Doug Fir S

Formerly 806 ▼

3/4

800SP Solid Pine N**F800** Doug Fir S

Formerly 800 ▼

1

801SP Solid Pine N**F801** Doug Fir S

Formerly 801 ▼

1-1/4

802FJ FJ Pine N/S

Formerly P802FJ ▲

802SP Solid Pine N/S

Formerly 802P ▼

F802 Doug Fir N/S

Formerly 802 ▼

F802FJ FJ Doug Fir N/S

1-3/8

803SP Solid Pine S

Formerly 803P ▼

F803 Doug Fir N/S

Formerly 803 ▼

803-O Oak N/S

1-1/2

F804FJ FJ Doug Fir N

1-5/8

F804 Doug Fir N/S

Formerly 804 ▼

807SP Solid Pine N

1-7/8

F805 Doug Fir N/S

Formerly 805 ▼

LATTICE**Redwood Lattice****819R** 1/4 x 1-3/8 N**820R** 1/4 x 1-1/4 S

Formerly 820 ▼

821R 1/4 x 1-5/8 N/S

Formerly 821 ▼

822R 1/4 x 2-1/2 S

Formerly 822 ▼

823R 1/4 x 3-1/2 S

Formerly 823 ▼

830R 1/4 x 5-1/2 S

Formerly 830 ▼

Solid Pine Lattice**700SP** 1/4 x 1-1/8 N/S**701SP** 1/4 x 1-1/4 S**701BSP** 1/4 x 1-3/8 N

Formerly 701SP ▲

702SP 1/4 x 1-5/8 S**702BSP** 1/4 x 1-3/4 N

Formerly 702SP ▲

703BSP 1/4 x 2-1/4 N

Formerly 703SP ▲

703SP 1/4 x 2-1/2 S**704SP** 1/4 x 3-1/2 N/S



OUTSIDE CORNER GUARD



Outside Corner Guard

3/4 x 3/4

720SP	Solid Pine	N/S
720-0	Oak	N/S



Outside Corner Guard

1 x 1

721SP	Solid Pine	N/S
721-0	Oak	N/S
721P	Poplar	N/S
721ALD	Alder	N/S
721C	Cherry	N/S
721MH	Mahogany	N/S
721MP	Maple	N/S



Detail Outside Corner Guard

1-1/8 x 1-1/8

723SP	Solid Pine	N/S
723-0	Oak	N/S
723P	Poplar	N/S
723C	Cherry	N/S
723MH	Mahogany	N/S
723MP	Maple	N/S

OUTSIDE CORNER GUARD



Outside Corner Guard

1-3/8 x 1-3/8

722SP	Solid Pine	N/S
--------------	------------	-----



Outside Corner Guard

1-1/2 x 1-1/2

722R	Redwood	N
-------------	---------	---



Protected Outside Corner Guard

1-1/2 x 1-1/2

604	Bodyguard	N/S
------------	-----------	-----



ROPE ROUNDS (HALF & FULL)

Rope Half Round

3/8"

HR617-0	Oak	S
HR617P	Poplar	S
HR617C	Cherry	S

1/2"

HR618-0	Oak	N/S
HR618P	Poplar	N/S
HR618ALD	Alder	N/S
HR618C	Cherry	N/S
HR618MP	Maple	N/S

11/16"

HR619P	Poplar	N/S
HR619C	Cherry	N/S
HR619MP	Maple	N/S

3/4"

HR619-0	Oak	N/S
HR619ALD	Alder	N/S

1"

HR620-0	Oak	N/S
HR620P	Poplar	N/S
HR620ALD	Alder	N/S
HR620C	Cherry	N/S
HR620MP	Maple	N/S

1-3/16"

HR621-0	Oak	S
HR621P	Poplar	S
HR621ALD	Alder	S
HR621C	Cherry	S
HR621MP	Maple	S

1-3/8"

HR622-0	Oak	S
HR622P	Poplar	S
HR622ALD	Alder	S
HR622C	Cherry	S
HR622MP	Maple	S

1-1/2"

HR623-0	Oak	S
HR623P	Poplar	S
HR623ALD	Alder	S
HR623C	Cherry	S
HR623MP	Maple	S

1-3/4"

HR624-0	Oak	S
HR624P	Poplar	S
HR624ALD	Alder	S
HR624C	Cherry	S
HR624MP	Maple	S

ROPE ROUNDS

Rope Full Round

1-3/8"

FR626-0	Oak	S
FR626P	Poplar	S
FR626C	Cherry	S

1-3/4"

FR627-0	Oak	S
FR627P	Poplar	S
FR627C	Cherry	S

**WAINSCOT BASE****Wainscot Base** with 3/8" Rab't

9/16 x 3-1/4

735P Poplar S

1/2 x 3-1/4

735MUL Ultralight MDF N/S**Wainscot Base** with 3/8" Rab't

1/2 x 5

736MUL Ultralight MDF N/S

9/16 x 5

736ALD Alder N/S**T&G WAINSCOT****Flat T&G Wainscot**

3/8 x 3-1/4

PR2001FJ Primed FJ Pine N/S**2001FJ** FJ Pine S

3/8 x 3-3/8

2000SP Solid Pine N**2001KP** Knotty Pine S

Formerly E2001 ▼

3/8 x 3-1/2

2001LDF Light Density LDF N/S**Reversible Beaded/
Flat T&G Wainscot**

3/8 x 3-1/4

R2000VG VG Doug Fir N/S

Formerly 2000VG ▲▼

3/8 x 3-3/8

R2000-0 Oak N/S

Formerly 2000-OR, 2000-0, 2001-0 ▼

R2000P Poplar N/S

Formerly 2000PR ▼

R2000ALD Alder N/S

Formerly 2000ALD ▲▼

**Beaded T&G Wainscot**

3/8 x 3-1/4

2000KP Knotty Pine S

Formerly E2000 ▼

2000-0 Oak N/S

3/8 x 3-3/8

2000FJ FJ Pine S**2000SP** Solid Pine N

3/8 x 3-1/2

2000LDF Light Density LDF N/S

3/8 x 3-7/8

PR2000FJ Primed FJ Pine N/S**Reversible Beaded/
V-Groove T&G Wainscot**

1/2 x 3-5/16

PR2004FJ Primed FJ Pine N**Beaded T&G Shiplap**

5/16 x 3-3/8

2003ALD Alder N/S**Protected T&G
Beaded Wainscot**

5/8 x 4

801BG Bodyguard  N/S**T&G Flooring**

3/4 x 3-1/2

FL1X4VG Doug Fir N



T&G WAINSCOT



Beaded T&G Wainscot

9/16 x 5-3/8

PR2002FJ Primed FJ Pine S



Flat T&G Wainscot

3/8 x 5-1/2

2003LDF Light Density LDF N/S

9/16 x 5-1/2

2003SP Solid Pine N/S



Reversible Beaded/ Flat T&G Wainscot

9/16 x 5-3/8

R2003VG VG Doug Fir N/S

Formerly 2003VG ▲▼



Beaded T&G Wainscot

3/8 x 5-1/2

2002LDF Light Density LDF N/S

9/16 x 5-1/2

2002SP Solid Pine N/S



Flat V-Groove Ceiling Panel

3/4 x 5-3/8

PR2003FJ Primed FJ Pine N/S



Protected T&G Beaded Wainscot

1 x 6

802BG Bodyguard  FSC N/S



Reversible V-Groove/Nickel Gap T&G Wainscot

5/8 x 5-1/2

NEW

2007LDF Light Density LDF N/S

PR2007FJ Primed FJ Pine N/S



Reversible V-Groove/Nickel Gap T&G Wainscot

5/8 x 7-3/8

NEW

2008LDF Light Density LDF N/S

PR2008FJ Primed FJ Pine N/S



Reversible Single/Double Nickel Gap T&G Wainscot

5/8 x 7-3/8

NEW

2009LDF Light Density LDF N/S

PR2009FJ Primed FJ Pine N/S



Beaded T&G Wainscot

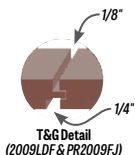
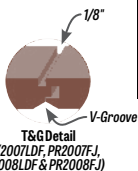
1/4 x 7

2005MUL Ultralight MDF S

3/8 x 7-1/4

2005LDF Light Density LDF N

T&G WAINSCOT



**EXTERIOR MOULDS****Stucco Mould**

3/4 x 1-1/4

826R Redwood S

Formerly 826 ▼

7/8 x 1-1/4

826-0 Oak S**826QWO** Qtr.SawnWhiteOak* S**826ALD** Alder S**826MH** Mahogany S**826SMH** SapeleMahogany * S**826WL** Walnut * S

7/8 x 1-1/2

826AR Redwood S

Formerly 826A ▼

**Stucco Mould**

1 3/16 x 1-5/16

UR953 Urethane N/S**PFSM** PolyFiber N/S

Formerly PCSM ▲▼

**#180 Eastern Brick Mould** *without Stucco Key*

1-1/8 x 2

612A-0 Oak N/S**612AQWO** Qtr.SawnWhiteOak* S**612AALD** Alder N/S

Formerly 612ALD ▼

612AC Cherry N**612AMH** Mahogany N/S**612ASMH** SapeleMahogany* S**612AWL** Walnut * S

1-1/4 x 2

PR612AFJ PrimedFJPine N/S

Formerly PR612A ▼

612AFJ FJPine N/S

Formerly 612A ▼

612ASP SolidPine N/S

Formerly E612 ▼

612AVG VGDougFir N/S**Stucco Mould**

3/4 x 1-3/16

PR953FJ PrimedFJPine S**953FJ** FJPine S

3/4 x 1-1/4

953RFJ FJRedwood S

Formerly 953AR ▼

7/8 x 1-1/4

953VG VGDougFir S**Thin Stucco Mould**

11/16 x 1-1/2

PR833BFJ PrimedFJPine N**833VG** VGDougFir N**Flat Stucco Mould**

7/8 x 1-1/4

954FJ FJPine S

Formerly 953B ▼

**#180 Eastern Brick Mould** *with Stucco Key*

1-1/8 x 2

612B-0 Oak N/S**612BALD** Alder N/S**612BC** Cherry N**612BMH** Mahogany N/S

1-1/4 x 2

PR612BFJ PrimedFJPine N/S

Formerly PR612B ▼

612BFJ FJPine N/S

Formerly 612B ▼

612BSP SolidPine N/S

Formerly B612 ▼

612BVG VGDougFir N/S**Stucco Mould**

13/16 x 1-3/8

833-0 Oak N**833ALD** Alder N**833C** Cherry N**833MH** Mahogany N

13/16 x 1-1/2

PR833FJ PrimedFJPine N**PR833RFJ** PrimedFJRedwood N**833RFJ** FJRedwood N**833R** Redwood N**Stucco Mould**

1 x 2-5/8

PR844R PrimedRedwood N**Arizona Brick Mould**

11/16 x 1-5/8

636FJ-1 FJPine S

Formerly 626A ▼

11/16 x 2-1/4

636FJ-2 FJPine S

Formerly 625A ▼

**Brick Mould**

1-3/8 x 1-3/8

824R Redwood S

Formerly 824 ▼

**Brick Mould**

1-1/4 x 1-1/2

PR841R PrimedRedwood N**841R** Redwood N

Formerly 841 ▼

* = **NEW** product for 2018



EXTERIOR MOULDS



Water Table

1-7/16 x 1-11/16

PR827R Primed Redwood N



Corrugated Wiggle Mould

3/4 x 1-5/8

828TP Treated Pine with Stain N/S
 Formerly 828BR ▲▼



Water Table with Lip

1-3/8 x 2

827WR Redwood S



Water Table without Lip

1-7/16 x 2

827R Redwood S
 Formerly 827 ▼



Water Table

1-7/16 x 3-1/4

PR829R Primed Redwood N



Shingle Mould

11/16 x 1-5/8

PR739R Primed Redwood N
739R Redwood N



Siding Mould

7/8 x 1-5/8

825R Redwood S
 Formerly 825 ▼



Step Siding Mould

15/16 x 1-3/4

PR842R Primed Redwood N



#180 Mitered Brick Mould without Stucco Key

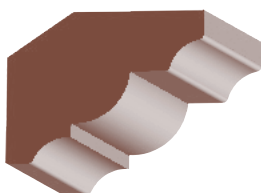
1-1/4 x 2

PFBKM6 PolyFiber (6"8") N/S
 Formerly PCBKM6 ▲▼

PFBKM8 PolyFiber (8"0") N/S
 Formerly PCBKM8 ▲▼

WGBKM6 Oak Woodgrain PolyFiber (6"8") N/S

WGBKM8 Oak Woodgrain PolyFiber (8"0") N/S



Gutter Mould

1-3/8 x 3-1/4

PR760R Primed Redwood N



Brick Mould with Stucco Key

1-1/4 x 2

UR612B Urethane N/S

PFBKMK PolyFiber N/S
 Formerly PCBKMK17 ▲▼



Chamfer Strip

1/2 x 1/2

906SP Solid Pine N/S

3/4 x 3/4

907SP Solid Pine N/S

1 x 1

908SP Solid Pine N/S

1-1/2 x 1-1/2

912SP Solid Pine N

EXTERIOR MOULD

**BODYGUARD PROTECTED EXTERIOR MOULDS & SIDING****BODYGUARD EXTERIOR MOULD****Quarter Round**

11/16 x 11/16

614 Bodyguard N/S

**Cove**

11/16 x 11/16

606 Bodyguard N/S

**Base Cap**

9/16 x 3/4

224 Bodyguard N/S

**Outside Corner Guard**

1-1/2 x 1-1/2

604 Bodyguard N/S

**T&G Beaded Wainscot**

5/8 x 4

801BG Bodyguard N/S

1 x 6

802BG Bodyguard N/S

**Shingle Mould**

11/16 x 1-5/8

616 Bodyguard N/S

**Carolina Casing**

11/16 x 3-1/4

388 Bodyguard N/S

**Howe Casing**

1-1/16 x 3-1/4

387 Bodyguard N/S

**#180 Eastern Brick Mould** *without Stucco Key*

1-1/4 x 2

381 Bodyguard N/S

**Brick Mould**

1-1/4 x 1-1/2

619 Bodyguard N/S

**Stucco Mould**

13/16 x 1-1/2

618 Bodyguard N/S

**Water Table**

1-7/16 x 2-1/16

630 Bodyguard N/S

**#180 Eastern Brick Mould** *with Stucco Key*

1-1/4 x 2

381K Bodyguard N/S

**Step Stucco Mould**

15/16 x 1-15/16

627 Bodyguard N/S

**Stucco Mould**

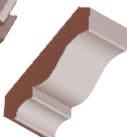
1 x 2-5/8

629 Bodyguard N/S

**Water Table**

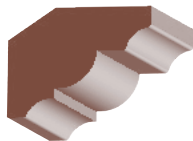
1-7/16 x 3-1/4

634 Bodyguard N/S

**Colonial Crown**

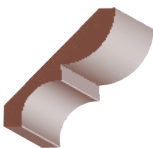
5/8 x 3-5/8

286 Bodyguard N/S

**Gutter Mould**

1-3/8 x 3-5/16

638 Bodyguard N/S

**Bed & Cove**

3/4 x 4-5/16

639 Bodyguard N/S

**Pediment Crown**

1-1/4 x 1-1/2

607 Bodyguard N/S

**Architrave**

1-3/16 x 4-1/4

1400 Bodyguard N/S

**Bead & Nose Cove**

1-1/4 x 1-3/4

024 Bodyguard N/S



BODYGUARD PROTECTED EXTERIOR MOULDS & SIDING

**BODYGUARD
EXTERIOR MOULD**



Reversible Sill

1-3/8 x 7

640 Bodyguard N/S



Detail Sill

1-3/8 x 7

642 Bodyguard N/S



Bevel Siding

1/2 x 4

1X4BS Bodyguard **NEW** N/S

Bodyguard End Seal

ESS 13 fl. oz N/S

EST 1 quart N/S

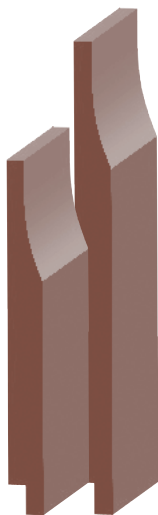
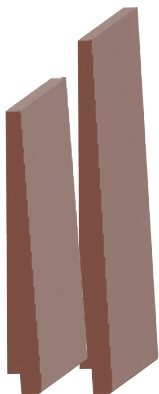
All Bodyguard products are FSC Certified and warrantied for 30 years. Scan the QR code for more info.



Nickel Gap Siding

1 x 6

1X6NGS Bodyguard **NEW** N/S



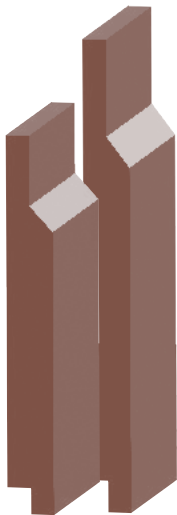
Cove Siding

1 x 8

771 Bodyguard N/S

1 x 10

772 Bodyguard N/S



Bevel Channel Siding

1 x 8

774 Bodyguard N/S

1 x 10

773 Bodyguard N/S

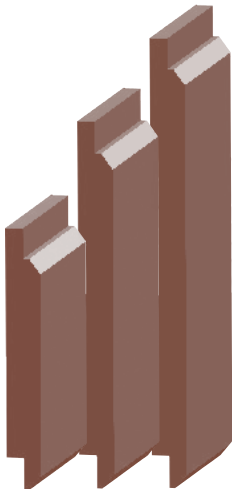
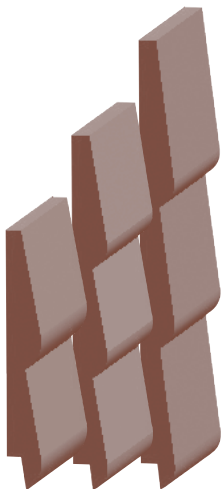
Rab't Smooth Face Siding

3/4 x 6

371 Bodyguard N/S

3/4 x 8

372 Bodyguard N/S

**BODYGUARD PROTECTED SIDING****BODYGUARD
SIDING****PROTECTED
EXTERIOR TRIM****Lap Siding**

1 x 6

430 2Lap Bodyguard N/S

1 x 8

432 3Lap Bodyguard N/S

1 x 10

433 3Lap Bodyguard N/S

V-Rustic Siding

1 x 6

793 Bodyguard N/S

1 x 8

794 Bodyguard N/S

1 x 10

795 Bodyguard N/S

PROTECTED EXTERIOR TRIM**MiraTEC Treated Exterior****Composite Trim (Length Available: 16')**

Part#	Nominal Size	Actual Size	Part #	Nominal Size	Actual Size
5/8X3MT	5/8x3	5/8x2-5/8	S 4/4X10MT	4/4x10	3/4x9-1/4
5/8X4MT	5/8x4	5/8x3-1/2	S 4/4X12MT	4/4x12	3/4x11-1/4
5/8X6MT	5/8x6	5/8x5-1/2	S 4/4X16MT	4/4x16	3/4x15-1/4
5/8X8MT	5/8x8	5/8x7-1/4	S 5/4X3MT	5/4x3	1x2-3/4
5/8X10MT	5/8x10	5/8x9-1/4	S 5/4X4MT	5/4x4	1x3-1/2
5/8X12MT	5/8x12	5/8x11-1/4	S 5/4X6MT	5/4x6	1x5-1/2
4/4X3MT	4/4x3	3/4x2-3/4	S 5/4X8MT	5/4x8	1x7-1/4
4/4X4MT	4/4x4	3/4x3-1/2	S 5/4X10MT	5/4x10	1x9-1/4
4/4X6MT	4/4x6	3/4x5-1/2	S 5/4X12MT	5/4x12	1x11-1/4
4/4X8MT	4/4x8	3/4x7-1/4			

**Extra Shutter Board**

1/2 x 7-5/8 x 8'

1X8EXT Extra N/S



T-MOULD, REDUCER & THRESHOLD



Reducer

1/2 x 2

894-0 Oak S
 Formerly 994-0 ▼

894C Cherry S
 Formerly 994C ▼

894MP Maple S
 Formerly 994MP ▼



Variable Reducer

11/16 x 2

893-0 Oak S
 Formerly 993-0 ▼

893C Cherry S
 Formerly 993C ▼

893MP Maple S
 Formerly 993MP ▼



Threshold

5/8 x 3-1/2 (Lineal 3'-16')

850-0 Oak S
 Formerly 850 ▼

5/8 x 3-1/2 x 37"
850-03 Oak S
 Formerly 850A ▼



T-Mould

5/8 x 2

892-0 Oak N/S
 Formerly 992-0 ▼

892C Cherry S
 Formerly 992C ▼

892MP Maple S
 Formerly 992MP ▼



Reducer

3/4 x 2-1/4

899-0 Oak S
 Formerly 999-0 ▼

899C Cherry S
 Formerly 999C ▼

899MP Maple S
 Formerly 999MP ▼



Threshold

3/4 x 3-1/2 (Lineal 3'-16')

851-0 Oak S
 Formerly 851 ▼

3/4 x 3-1/2 x 37"
851-03 Oak S
 Formerly 851A ▼



Threshold

1 x 3-1/2 (Lineal 3'-16')

854-0 Oak S
 Formerly 854 ▼

1 x 3-1/2 x 37"
854-03 Oak S
 Formerly 854A ▼



Threshold

3/4 x 4-5/8 (Lineal 3'-16')

858-0 Oak N



Threshold

3/4 x 5-1/2 (Lineal 3'-16')

852-0 Oak S
 Formerly 852 ▼

3/4 x 5-1/2 x 37"
852-03 Oak S
 Formerly 852A ▼



Threshold

3/4 x 3-5/8 (Lineal 3'-16')

860-0 Oak N



Threshold

3/4 x 4-1/2 (Lineal 3'-16')

853-0 Oak S
 Formerly 853 ▼

3/4 x 4-1/2 x 37"
853-03 Oak S
 Formerly 853A ▼



Threshold

1-1/16 x 5-5/8 (Lineal 3'-16')

859-0 Oak N

THRESHOLD

**EXTERIOR SILLS** **Sill**

1-1/16 x 5-1/4

50S	Oak	N
5ALDS	Alder	N
5CS	Cherry	N
5MHS	Mahogany	N
5WLS	Walnut	N

**Sill**

1-1/16 x 7-1/4

70S	Oak	N
7ALDS	Alder	N
7CS	Cherry	N
7MHS	Mahogany	N
7WLS	Walnut	N

**Beveled Sill**

1-1/4 x 7-1/8

80S	Oak	S
80S-42	Oak (42")	S
1-1/4 x 8-7/8		
100S	Oak	S
10MHS	Sapele Mahogany NEW	N
1-1/4 x 11-1/4		
120S	Oak	S

**Flat Sill**

1-1/4 x 7-1/8

8FOS	Oak	S
1-1/4 x 8-7/8		
10FOS	Oak	S
1-1/4 x 11-1/4		
12FOS	Oak	S

**Sill**

1-3/8 x 7-1/4

8RS	Redwood	N/S
------------	---------	-----

**Sill with Detail**

1-3/8 x 7-1/4

8RSD	Redwood	S
2 x 8		
642	Bodyguard	N/S

EXTERIOR SILLS**Reversible Sill**

1-3/8 x 7-1/4

8RVS	Redwood	N
2 x 8		
640	Bodyguard	N/S

**Sill**

1-3/8 x 8-7/8

10BRS	Redwood	N
<i>Formerly 10RS</i> ▲		
1-3/8 x 9-1/4		
10RS	Redwood	S

**Sill**

1-1/4 x 8-7/8

10WOS	White Oak	N
10WLS	Walnut	N

NEW



TRIMBOARDS



Non-Protected S1S2E Trimboards

Primed FJ Pine

PR760FJ	23/32 x 1-1/2	S
PR761FJ	23-32 x 2-1/2	S
PR762FJ	23/32 x 3-1/2	S
PR763FJ	23/32 x 5-1/2	S
PR764FJ	23/32 x 7-1/4	S
PR765FJ	23/32 x 9-1/4	S
PR766FJ	23/32 x 11-1/4	S
PR767FJ	1-1/8 x 3-1/2	S
PR768FJ	1-1/8 x 5-1/2	S
PR769FJ	1-1/8 x 7-1/4	S
PR770FJ	1-7/16 x 1-1/2	S
PR771FJ	1-7/16 x 3-1/2	S
PR772FJ	1-7/16 x 5-1/2	S
PR773FJ	1-7/16 x 7-1/4	S
PR774FJ	1-7/16 x 9-1/4	S
PR775FJ	1-7/16 x 11-1/4	S

Non-Protected S4SSE Trimboards

Primed FJ Pine

Lengths Available: 16'

1X2S4S	3/4 x 1-1/2	N/S
1X3S4S	3/4 x 2-1/2	N/S
1X4S4S	3/4 x 3-1/2	N/S
1X5S4S	3/4 x 4-1/2	N
1X6S4S	3/4 x 5-1/2	N/S
1X8S4S	3/4 x 7-1/4	N/S
1X10S4S	3/4 x 9-1/4	N/S
1X12S4S	3/4 x 11-1/4	N/S
5/4X4S4S	1-1/16 x 3-1/2	N/S
5/4X6S4S	1-1/16 x 5-1/2	N/S
5/4X8S4S	1-1/16 x 7-1/2	N/S

SILL PAN



Sill Pan (sold as pairs)

2-1/2 x 5-1/2 x 1-1/4

SP Galvanized Steel S



Bodyguard® Protected S1S2E Trimboards

Interior/Exterior Primed FJ Pine

Lengths Available: 16' & 20'

EL & EL Number	Bodyguard Number	Size	
1X2S1S	710	3/4 x 1-1/2	N/S
1X3S1S	711	3/4 x 2-1/2	N/S
1X4S1S	712	3/4 x 3-1/2	N/S
1X6S1S	714	3/4 x 5-1/2	N/S
1X8S1S	716	3/4 x 7-1/4	N/S
1X10S1S	718	3/4 x 9-1/4	N/S
1X12S1S	720	3/4 x 11-1/4	N/S
5/4X4S1S	723*	1-1/16 x 3-1/2	N/S
5/4X6S1S	724*	1-1/16 x 5-1/2	N/S
5/4X8S1S	725	1-1/16 x 7-1/4	N/S
2X2S1S	722	1-7/16 x 1-1/2	N/S
2X4S1S	713	1-7/16 x 3-1/2	N/S
2X6S1S	715	1-7/16 x 5-1/2	N/S
2X8S1S	717	1-7/16 x 7-1/4	N/S
2X10S1S	719	1-7/16 x 9-1/8	N/S
2X12S1S	721	1-7/16 x 11-1/8	N/S

S1S2E = Reversible S1S (1 side Rough Sawn and 1 side Smooth)

S4SSE = Smooth 4 Sides, Square Edges



PAKARI™ THERMALLY MODIFIED LUMBER



Pakari™ Rustic Barnwood Lumber

11/16 x 3-5/8

PAK1X4BW Pakari N/S **NEW**

11/16 x 5-3/4

PAK1X6BW Pakari N/S **NEW**



Pakari™ Lap-Jointed Paneling

11/16 x 5-7/16

PAK1X6LAP Pakari N/S **NEW**

TRIMBOARDS

PAKARI LUMBER

**INTERIOR S4S****INTERIOR S4S****Ultralight MDF**

713MUL	11/16x1-1/2	N/S
714MUL	11/16x2-1/2	N/S
715MUL	11/16x3-1/2	N/S
750MUL	11/16x5-1/2	N/S
751MUL	11/16x7-1/4	N/S
752MUL	11/16x9-1/4	N/S
753MUL	11/16x11-1/4	N/S

Light Density LDF

713LDF	11/16x1-1/2	N/S
714LDF	11/16x2-1/2	N/S
715LDF	11/16x3-1/2	N/S
750LDF	11/16x5-1/2	N/S
751LDF	11/16x7-1/4	N/S
752LDF	11/16x9-1/4	S
753LDF	11/16x11-1/4	N/S

Double Primed FJ Pine

PR713FJ	11/16x1-1/2	S
PR715FJ	11/16x3-1/2	S
PR750FJ	11/16x5-1/2	S
PR751FJ	11/16x7-1/4	S
PR753FJ	11/16x11-1/4	S

FJ Pine

715FJ	11/16x3-1/2	S
750FJ	11/16x5-1/2	S
751FJ	11/16x7-1/4	S
753FJ	11/16x11-1/4	S

Solid Pine

705SP	1/2x1/2	N/S
706SP	1/2x3/4	N/S
707SP	1/2x1-1/2	N/S
708SP	1/2x2-1/2	N/S
709SP	1/2x3-1/2	N/S
710SP	1/2x5-1/2	N/S
711SP	3/4x3/4	N/S
712SP	11/16x1-1/4	S
713SP	11/16x1-5/8	N/S
714SP	11/16x2-1/2	N/S
715SP	11/16x3-1/2	N/S
716SP	1x1	N/S
717SP	1-9/16x1-9/16	N/S
719SP	1-1/2x1-1/2	S
	(4 Eased Edge)	
750SP	3/4x5-1/2	N/S
	(1x6) C & Better	
751SP	3/4x7-1/4	N/S
	(1x8) C & Better	
752SP	3/4x9-1/4	S
	(1x10) C & Better	
753SP	3/4x11-1/4	N/S
	(1x12) C & Better	

Knotty Pine (#2 Common)

715KP	3/4x3-1/2	N
750KP	3/4x5-1/2	N
751KP	3/4x7-1/4	N
752KP	3/4x9-1/4	N
753KP	3/4x11-1/4	N
758KP	1-1/2x11-1/4	N

VG Doug Fir

713VG	3/4x1-1/2	N
717VG	1-1/2x1-1/2	N
714VG	3/4x2-1/2	N
715VG	3/4x3-1/2	N/S
725VG	3-1/2x3-1/2	N
750VG	3/4x5-1/2	N/S
751VG	3/4x7-1/4	N/S
752VG	3/4x9-1/4	N/S
753VG	3/4x11-1/4	N/S
DUTCHVG	1-1/4x3-1/2	S
755VG	1-1/2x3-1/2	N
756VG	1-1/2x5-1/2	N
757VG	1-1/2x7-1/4	N
759VG	1-1/2x9-1/4	N
758VG	1-1/2x11-1/4	N

Redwood

711R	3/4x3/4	N
713R	3/8x2-1/2	N
742R	11/16x1-1/2	N

Oak

713-O	3/4x1-5/8	N/S
714-O	3/4x2-1/2	N/S
715-O	3/4x3-1/2	N/S
750-O	3/4x5-1/2	N/S
751-O	3/4x7-1/4	N/S
752-O	3/4x9-1/4	S
753-O	3/4x11-1/4	N/S

Poplar

713P	3/4x1-5/8	N/S
714P	3/4x2-1/2	N/S
715P	3/4x3-1/2	N/S
750P	3/4x5-1/2	N/S
751P	3/4x7-1/4	N/S
752P	3/4x9-1/4	N/S
753P	3/4x11-1/4	N/S

Alder

715ALD	3/4x3-1/2	N/S
750ALD	3/4x5-1/2	N/S
751ALD	3/4x7-1/4	N/S
752ALD	3/4x9-1/4	S

Knotty Alder

715KA	3/4x3-1/2	N
750KA	3/4x5-1/2	N
751KA	3/4x7-1/4	N
753KA	3/4x11-1/4	N
754KA	1x5-1/2	N
756KA	1-1/2x5-1/2	N

Cherry

714C	3/4x2-1/2	N
715C	3/4x3-1/2	N/S
750C	3/4x5-1/2	N/S
751C	3/4x7-1/4	N/S
752C	3/4x9-1/4	N/S
753C	3/4x11-1/4	N

Mahogany

713MH	3/4x1-5/8	N
714MH	3/4x2-1/2	N
715MH	3/4x3-1/2	N/S
750MH	3/4x5-1/2	N/S
751MH	3/4x7-1/4	N/S
752MH	3/4x9-1/4	S
753MH	3/4x11-1/4	N/S

Maple

714MP	3/4x2-1/2	N
715MP	3/4x3-1/2	N/S
750MP	3/4x5-1/2	N/S
751MP	3/4x7-1/4	N/S
752MP	3/4x9-1/4	S
753MP	3/4x11-1/4	N/S



INTERIOR DOOR JAMBS

Interior Door Jamb

Kerfing for bullnose is available on all jamb sizes and species. Custom size odd wall widths available upon request.



SIZE	SPECIES	6/8	8/0	RANDOM LINEAL	17' LINEAL	
3-9/16	FJ Pine (Primed)	PR3916I6	PR3916I8	—	PR3916IL	S
	FJ Pine	3916I6	3916I8	—	3916IL	S
	Eng. VG Doug Fir	3916FI6	3916FI8	3916FIL	—	N/S
	Superior Alder	3916ALDI6	3916ALDI8	3916ALDIL	—	N/S
	Knotty Alder	3916KAI6	3916KAI8	3916KAIL	—	N/S
4-9/16	MDF (Primed)	4916MI6	4916MI8	—	4916MIL	N/S
	FJ Pine (Primed)	PR4916I6	PR4916I8	—	PR4916IL	N/S
	FJ Pine	4916I6	4916I8	—	4916IL	N/S
	Solid Pine	4916SPI6	4916SPI8	—	—	N/S
	Veneer Solid Pine	4916PVI6	4916PVI8	—	—	N
	Eng. VG Doug Fir	4916FI6	4916FI8	4916FIL	—	N/S
	Poplar	4916PI6	4916PI8	4916PIL	—	N/S
	Oak	4916OI6	4916OI8	4916OIL	—	N/S
	Cherry	4916CI6	4916CI8	4916CIL	—	N/S
	Superior Alder	4916ALDI6	4916ALDI8	4916ALDIL	—	N/S
	Knotty Alder	4916KAI6	4916KAI8	4916KAIL	—	N/S
	4-5/8	Superior Alder	458ALDI6	458ALDI8	458ALDIL	—
4-13/16	MDF (Primed)	434MI6	434MI8	—	434MIL	N/S
	FJ Pine (Primed)	PR434I6	PR434I8	—	PR434IL	N/S
	FJ Pine	434I6	434I8	—	434IL	N/S
	Solid Pine	434SPI6	434SPI8	—	—	N/S
	Veneer Solid Pine	434PVI6	—	—	—	N
	Eng. VG Doug Fir	434FI6	434FI8	434FIL	—	N/S
	Poplar	434PI6	434PI8	434PIL	—	N/S
	Oak	434OI6	434OI8	434OIL	—	N/S
	Cherry	434CI6	434CI8	434CIL	—	N/S
	Mahogany	434MHI6	434MHI8	—	—	S
	Superior Alder	434ALDI6	434ALDI8	434ALDIL	—	N/S
	Knotty Alder	434KAI6	434KAI8	434KAIL	—	N/S
	4-7/8	FJ Pine	478I6	478I8	—	478IL
Superior Alder		478ALDI6	478ALDI8	478ALDIL	—	S
5-1/4	MDF (Primed)	514MI6	514MI8	—	514MIL	N/S
	FJ Pine (Primed)	PR514I6	PR514I8	—	PR514IL	N/S
	FJ Pine	514I6	514I8	—	514IL	N/S
	Solid Pine	514SPI6	514SPI8	—	—	N/S
	Veneer Solid Pine	514PVI6	—	—	—	N
	Eng. VG Doug Fir	514FI6	514FI8	514FIL	—	N/S
	Poplar	514PI6	514PI8	514PIL	—	N/S
	Oak	514OI6	514OI8	514OIL	—	N/S
	Cherry	514CI6	514CI8	514CIL	—	N/S
	Mahogany	514MHI6	514MHI8	—	—	S
	Superior Alder	514ALDI6	514ALDI8	514ALDIL	—	N/S
	Knotty Alder	514KAI6	514KAI8	514KAIL	—	N/S
5-1/2	FJ Pine	512I6	512I8	—	—	S
6-9/16	MDF (Primed)	6916MI6	6916MI8	—	6916MIL	N/S

See page 90 for Interior Door Jamb specifications

INTERIOR DOOR JAMBS



INTERIOR DOOR JAMBS

SIZE	SPECIES	6/8	8/0	RANDOM LINEAL	17' LINEAL	
	FJ Pine (Primed)	PR691616	PR691618	—	PR69161L	N/S
	FJ Pine	691616	691618	—	69161L	N/S
	Veneer Solid Pine	6916PVI6	—	—	—	N
7-1/4	MDF (Primed)	714MI6	714MI8	—	714MIL	N/S
	FJ Pine (Primed)	PR71416	PR71418	—	PR7141L	N/S
	FJ Pine	714I6	714I8	—	714IL	N/S
	Solid Pine	714SPI6	714SPI8	—	—	N/S
	Veneer Solid Pine	714PVI6	—	—	—	N
	Eng. VG Doug Fir	714FI6	714FI8	714FIL	—	N/S
	Poplar	714PI6	714PI8	714PIL	—	N/S
	Oak	714OI6	714OI8	714OIL	—	N/S
	Cherry	714CI6	714CI8	714CIL	—	N/S
	Mahogany	714MH16	714MH18	—	—	S
	Superior Alder	714ALDI6	714ALDI8	714ALDIL	—	N/S
	Knotty Alder	714KA16	714KA18	714KAIL	—	N/S
	7-1/2	FJ Pine	712I6	712I8	—	—
9-1/4	Knotty Alder	914KA16	914KA18	914KAIL	—	N/S
11-1/4	FJ Pine	1114I6	1114I8	—	1114IL	S
	Oak	1114OI6	1114OI8	1114OIL	—	S
	Poplar	1114PI6	1114PI8	1114PIL	—	S
	Eng. VG Doug Fir	1114FI6	1114FI8	1114FIL	—	S

Interior Door Jamb Specifications:

5 pairs/bundle

Thickness: 1 1/16"

3/0 Heads: 36-3/4" (cut 3/4" over opening)

6/8 Sides: 81" below dado (Nor. Cal. & AZ)*
 80-5/8" below dado (So. Cal.)*

8/0 Sides: 97" below dado (Nor. Cal. & AZ)*
 96-5/8" below dado (So. Cal.)*

Dado depth: 3/8"

* Check with a sales representative for dado spec availability in your region.

Lineal Lengths Available

6'-10'	Superior & Knotty Alder
6'-12'	Oak
3'-16'	Engineered VG Fir
6'-16'	MDF, Raw & Primed FJ Pine, Poplar, Cherry, Mahogany

• Solid Pine jambs may have a glue line where door stop is applied.

• Random lengths only available in most solid wood species.

Domestic Primed FJ Pine Jambs

Size	6/8	8/0	
4-1/8	PR41816D	PR41818D	S
4-9/16	PR491616D	PR491618D	N
4-5/8	PR45816D	PR45818D	N
4-13/16	PR43416D	PR43418D	N/S
5-1/4	PR51416D	PR51418D	N
7-1/4	PR71416D	PR71418D	N

ValuFlex™ Jambs

(for use as header on interior arched openings)

Size	Primed FJ	MDF	Alder
11/16 x 4-9/16	4916ILF	4916MILF	—
11/16 x 4-13/16	4341ILF	434MILF	—
11/16 x 5-1/4	514ILF	514MILF	—
11/16 x 6-9/16	—	6916MILF	514ALDIF
11/16 x 7-1/4	714ILF	714MILF	—



Jambs Kerfed 2 Sides

Size	Species	6/8		8/0	
		81" Below Dado (NorCal)	80-5/8" Below Dado (SoCal)	97" Below Dado (NorCal)	96-5/8" Below Dado (SoCal)
3-9/16	FJ Pine (Primed)	PR391616K2	PR391616K2S	PR391618K2	PR391618K2S
	FJ Pine	—	391616K2S	—	391618K2S
	Doug Fir	3916FI6K2	—	3916FI8K2	3916FI8K2S
	Poplar	—	3916PI6K2S	—	3916PI8K2S

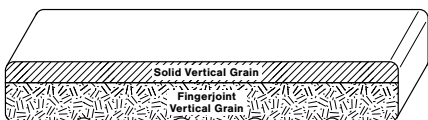


ENGINEERED DOUGLAS FIR JAMBS & FRAMES

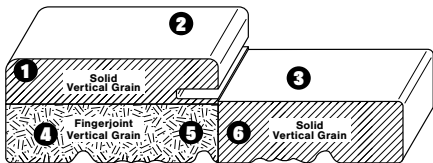
Superior Performance from a Superior Product

Solid VG Fir has become scarce. Due to lack of sourcing, Engineered (Eng.) Jambs are now being supplied in their place.

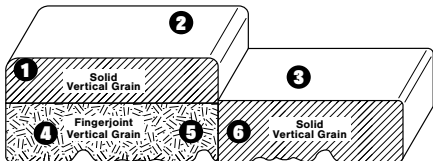
Eng. Vertical Grain Fir Interior Door Jambs



Eng. Vertical Grain Fir Exterior Door Jambs with Kerf for Weatherstrip



Eng. Vertical Grain Fir Exterior Door Jambs without Kerf for Weatherstrip



1. Ripplable edges allow infinite on-site adjustments.
2. Dents and sanding are no problem for the 9/16" thick top.
3. Strong and durable solid wood rabbet: color & grain matched to the body.
4. Same species Vertical Grain FJ substrate further minimizes cupping.
5. Environmentally responsible FJ substrate reduces waste.
6. Edge glued construction relieves stresses to minimize cupping.

Features and Benefits:

- Available in standard sized door lengths with little to no waste.
- **Strength**—100% Douglas Fir fiber combined with an exterior rated glue that bonds stronger than the wood itself, ensuring this jamb can handle the stresses and wear of any type of door.
- **Stability**—an engineered jamb is far more dimensionally stable than a one-piece jamb leg (especially in Mixed Grain). The laminations of an engineered jamb reduce the internal stresses that cause the wood to cup, twist, and/or bow.
- **Premium Quality**—both the body and rabbet of the jamb have been stringently graded to be clear of any defects and are hand selected to match in both fiber color and grain.
- **Environmentally Friendly**—the fingerjoint substrate is composed of Vertical Grain Douglas Fir that would have typically been fall down or waste material, using more of every harvested Douglas Fir tree.
- **Reliability**—using only one species in the engineered construction makes the jamb react evenly to any changes in humidity and temperature. Preventing delaminating or cupping that can occur when multiple species are used.
- **Durability**—there are no concerns in sanding or steaming out any dents during the life of the jamb.
- **Flexibility**—both edges are ripplable to accommodate custom sized door openings.

VG FIR JAMBS & FRAMES

**EXTERIOR DOOR JAMBS/FRAMES** **Standard Exterior Door Frame**for 1-3/4' Doors with 1/2" x 1-13/16" Door Rab't
No Weatherstrip Kerf

SIZE	SPECIES	6/8	8/0	RANDOM LINEAL	17' LINEAL	
4-1/8	FJ Pine (Primed)	PR4186	PR4188	—	PR418L	N/S
	FJ Pine	4186	4188	—	418L	N/S
	Solid Pine	418SP6	418SP8	—	—	N/S
	Eng. Flat Grain Fir	418FGE6	418FGE8	—	—	S
	Solid Flat Grain Fir	—	—	418FGL	—	S
	Eng. VG Doug Fir	418VGE6	418VGE8	—	—	N/S
	Solid VG Doug Fir	—	—	418VGL	—	N/S
	Oak	41806	41808	4180L	—	N/S
	Poplar	418P6	418P8	418PL	—	N/S
	Cherry	418C6	418C8	418CL	—	N/S
	Mahogany	418M6	418M8	418ML	—	N/S
4-1/2	FJ Pine (Primed)	PR4126	PR4128	—	PR412L	S
	FJ Pine	4126	4128	—	412L	S
	Eng. Flat Grain Fir	412FGE6	412FGE8	—	—	S
	Solid Flat Grain Fir	—	—	412FGL	—	S
	Oak	41206	41208	4120L	—	S
4-5/8	FJ Pine (Primed)	PR4586	PR4588	—	PR458L	N
	FJ Pine	4586	4588	—	458L	N/S
	Solid Pine	458SP6	458SP8	—	—	N/S
	Eng. VG Doug Fir	458VGE6	458VGE8	—	—	N/S
	Solid VG Doug Fir	—	—	458VGL	—	N/S
	Oak	45806	45808	4580L	—	N
	Poplar	458P6	458P8	458PL	—	N
	Superior Alder	458SA6	458SA8	—	—	N/S
	Knotty Alder	458KA6	458KA8	—	—	N/S
	Cherry	458C6	458C8	458CL	—	N/S
	Mahogany	458M6	458M8	458ML	—	N
4-3/4	FJ Pine (Primed)	PR434E6	PR434E8	—	PR434EL	S
	FJ Pine	434E6	434E8	—	434EL	S
	Eng. Flat Grain Fir	434FGE6	434FGE8	—	—	S
	Solid Flat Grain Fir	—	—	434FGL	—	S
5-1/4	FJ Pine (Primed)	PR514E6	PR514E8	—	PR514EL	N/S
	FJ Pine	514E6	514E8	—	514EL	N/S
	Solid Pine	514SPE6	514SPE8	—	—	N/S
	Eng. Flat Grain Fir	514FGE6	514FGE8	—	—	S
	Solid Flat Grain Fir	—	—	514FGL	—	S
	Eng. VG Doug Fir	514VGE6	514VGE8	—	—	N/S
	Solid VG Doug Fir	—	—	514VGL	—	N/S
	Oak	5140E6	5140E8	5140EL	—	N/S
	Poplar	514PE6	514PE8	514PEL	—	N/S
	Superior Alder	514SAE6	514SAE8	—	—	N/S
	Knotty Alder	514KAE6	514KAE8	—	—	N/S
Cherry	514CE6	514CE8	514CEL	—	N/S	
Mahogany	514ME6	514ME8	514MEL	—	N/S	
6-1/8	FJ Pine (Primed)	PR6186	PR6188	—	PR618L	S
	FJ Pine	6186	6188	—	618L	S
	Eng. Flat Grain Fir	618FGE6	618FGE8	—	—	S
	Solid Flat Grain Fir	—	—	—	618FGL	S



EXTERIOR DOOR JAMBS/FRAMES

EXTERIOR DOOR JAMBS

SIZE	SPECIES	6/8	8/0	RANDOM LINEAL	17' LINEAL	
6-5/8	FJ Pine (Primed)	PR6586	PR6588	—	PR658L	N/S
	FJ Pine	6586	6588	—	658L	N/S
	Eng. Flat Grain Fir	658FGE6	658FGE8	—	—	S
	Solid Flat Grain Fir	—	—	658FGL	—	S
	Eng. VG Doug Fir	658VGE6	658VGE8	—	—	N/S
	Solid VG Doug Fir	—	—	658VGL	—	N/S
	Solid Pine	658SP6	658SP8	—	—	N/S
	Cherry	658C6	658C8	658CL	—	
7-1/4	FJ Pine (Primed)	PR714E6	PR714E8	—	PR714EL	N/S
	FJ Pine	714E6	714E8	—	714EL	N/S
	Solid Pine	714SPE6	714SPE8	—	—	N/S
	Eng. Flat Grain Fir	714FGE6	714FGE8	—	—	S
	Solid Flat Grain Fir	—	—	714FGL	—	S
	Eng. VG Doug Fir	714VGE6	714VGE8	—	—	N/S
	Solid VG Doug Fir	—	—	714VGL	—	N/S
	Oak	714OE6	714OE8	714OEL	—	N/S
	Poplar	714PE6	714PE8	714PEL	—	N/S
	Superior Alder	714SAE6	714SAE8	—	—	N/S
	Knotty Alder	714KAE6	714KAE8	—	—	N/S
	Cherry	714CE6	714CE8	714CEL	—	N/S
	Mahogany	714ME6	714ME8	714MEL	—	N/S

Exterior Door Frame Specifications:

- 3 pairs/bundle
- 3/0 Heads: 36-3/4" (cut 3/4" over opening)
- 6/8 Sides: 82-1/2" below dado
- 8/0 Sides: 98-1/2" below dado
- Dado depth: 3/8"

- Single end dado (except on lineal)
- No Screen Rab't

Lineal Lengths Available

3'-12"	Oak, Poplar, Cherry, Mahogany
3'-16"	Solid VG Fir, Solid Flat Grain Fir
17'	Raw & Primed FJ Pine

- Kerfing for Bullnose is available
- Custom widths available
- Random lengths only available in most solid wood species.

San Diego Exterior Door Jamb

1-1/4" Thick

SIZE	SPECIES	6/8	8/0	17' LINEAL	
4-1/8	FJ Pine	418SD6	418SD8	418SDL	S
4-1/2	FJ Pine	412SD6	412SD8	412SDL	S
4-3/4	FJ Pine	434SD6	434SD8	434SDL	S
5-1/4	FJ Pine	514SD6	514SD8	514SDL	S
6-1/8	FJ Pine	618SD6	618SD8	618SDL	S
7-1/4	FJ Pine	714SD6	714SD8	714SDL	S



- Kerfing for bullnose is available on all jamb sizes and species.
- Custom size odd wall widths available upon request.

Raw & Primed Exterior Double Rabbeted FJ Frames

SIZE	SPECIES	6/8	8/0	17' LINEAL	
4-5/8	Unprimed	458DR6	—	458DRL	N/S
	Primed	PR458DR6	—	PR458DRL	N/S
5-1/4	Unprimed	514DR6	—	514DRL	N/S
	Primed	PR514DR6	—	PR514DRL	N/S
6-5/8	Unprimed	658DR6	—	658DRL	N/S
	Primed	PR658DR6	PR658DR8	PR658DRL	N/S
7-1/4	Primed	PR714DR6	PR714DR8	PR714DRL	N/S



EXTERIOR DOOR JAMBS/FRAMES **Exterior Door Frame**for 1-3/4" Doors with Weatherstrip Kerf
with 1/2" x 2-1/8" Door Rab't

SIZE	SPECIES	6/8	8/0	RANDOM LINEAL	17' LINEAL	
4-1/8	FJ Pine (Primed)	PR418W6	PR418W8	—	PR418WL	N/S
	FJ Pine	418W6	418W8	—	418WL	N/S
	Solid Pine	418WSP6	418WSP8	—	—	N/S
	Eng. Flat Grain Fir	418WFGE6	418WFGE8	—	—	S
	Solid Flat Grain Fir	—	—	418WFGL	—	S
	Eng. VG Doug Fir	418WVGE6	418WVGE8	—	—	N/S
	Solid VG Doug Fir	—	—	418WVGL	—	N/S
	Oak	418W06	418W08	418WOL	—	N/S
	Poplar	418WP6	418WP8	418WPL	—	N/S
	Cherry	418WC6	418WC8	418WCL	—	N/S
Mahogany	418WM6	418WM8	418WML	—	N/S	
4-1/2	FJ Pine	412W6	412W8	—	412WL	S
4-5/8	FJ Pine (Primed)	PR458W6	PR458W8	—	PR458WL	N/S
	FJ Pine	458W6	458W8	—	458WL	N/S
	Solid Pine	458WSP6	458WSP8	—	—	N/S
	Eng. Flat Grain Fir	458WFGE6	458WFGE8	—	—	S
	Solid Flat Grain Fir	—	—	458WFGL	—	S
	Eng. VG Doug Fir	458WVGE6	458WVGE8	—	—	N/S
	Solid VG Doug Fir	—	—	458WVGL	—	N/S
	Oak	458W06	458W08	458WOL	—	N/S
	Poplar	458WP6	458WP8	458WPL	—	N
	Superior Alder	458WSA6	458WSA8	—	—	N/S
	Knotty Alder	458WKA6	458WKA8	—	—	N/S
	Cherry	458WC6	458WC8	458WCL	—	N/S
Mahogany	458WM6	458WM8	458WML	—	N	
4-3/4	FJ Pine (Primed)	PR434W6	PR434W8	—	PR434WL	S
	FJ Pine	434W6	434W8	—	434WL	S
5-1/4	FJ Pine (Primed)	PR514W6	PR514W8	—	PR514WL	N/S
	FJ Pine	514W6	514W8	—	514WL	N/S
	Solid Pine	514WSP6	514WSP8	—	—	N/S
	Eng. Flat Grain Fir	514WFGE6	514WFGE8	—	—	S
	Solid Flat Grain Fir	—	—	514WFGL	—	S
	Eng. VG Doug Fir	514WVGE6	514WVGE8	—	—	N/S
	Solid VG Doug Fir	—	—	514WVGL	—	N/S
	Oak	514W06	514W08	514WOL	—	N/S
	Poplar	514WP6	514WP8	514WPL	—	N/S
	Superior Alder	514WSA6	514WSA8	—	—	N/S
	Knotty Alder	514WKA6	514WKA8	—	—	N/S
	Cherry	514WC6	514WC8	514WCL	—	N/S
Mahogany	514WM6	514WM8	514WML	—	N/S	
5-1/2	FJ Pine	512W6	512W8	—	—	S
6-1/8	FJ Pine (Primed)	PR618W6	PR618W8	—	PR618WL	S
	FJ Pine	618W6	618W8	—	618WL	S
	Eng. Flat Grain Fir	618WFGE6	618WFGE8	—	—	S
	Solid Flat Grain Fir	—	—	618WFGL	—	S
6-9/16	Eng. VG Doug Fir	6916WVGE6	6916WVGE8	—	—	S
	Solid VG Doug Fir	—	—	6916WVGL	—	S



EXTERIOR DOOR JAMBS/FRAMES

EXTERIOR DOOR JAMBS

SIZE	SPECIES	6/8	8/0	RANDOM LINEAL	17' LINEAL	
6-5/8	FJ Pine (Primed)	PR658W6	PR658W8	—	PR658WL	N/S
	FJ Pine	658W6	658W8	—	658WL	N/S
	Solid Pine	658WSP6	658WSP8	—	—	N/S
	Eng. Flat Grain Fir	658WFGE6	658WFGE8	—	—	S
	Solid Flat Grain Fir	—	—	658WFGL	—	S
	Eng. VG Doug Fir	658WVGE6	658WVGE8	—	—	N/S
	Solid VG Doug Fir	—	—	658WVGL	—	N/S
	Cherry	658WC6	658WC8	658WCL	—	N/S
7-1/4	FJ Pine (Primed)	PR714W6	PR714W8	—	PR714WL	N/S
	FJ Pine	714W6	714W8	—	714WL	N/S
	Solid Pine	714WSP	714WSP8	—	—	N/S
	Eng. Flat Grain Fir	714WFGE6	714WFGE8	—	—	S
	Solid Flat Grain Fir	—	—	714WFGL	—	S
	Eng. VG Doug Fir	714WVGE6	714WVGE8	—	—	N/S
	Solid VG Doug Fir	—	—	714WVGL	—	N/S
	Oak	714W06	714W08	714W0L	—	N/S
	Poplar	714WP6	714WP8	714WPL	—	N/S
	Superior Alder	714WSA6	714WSA8	—	—	N/S
	Knotty Alder	714WKA6	714WKA8	—	—	N/S
	Cherry	714WC6	714WC8	714WCL	—	N/S
	Mahogany	714WM6	714WM8	714WML	—	N/S
7-1/2	FJ Pine	712W6	712W8	—	—	S
9-1/4	Knotty Alder	914WKA6	914WKA8	—	—	N/S

Exterior Door Frame Specs:

3 pairs/bundle

Thickness: 1-1/4"

3/0 Heads: 36-3/4" (cut 3/4" over opening)

6/8 Sides: 82-1/2" below dado

8/0 Sides: 98-1/2" below dado

Dado depth: 3/8"

• Single end dado (except on lineal)

Lineal Lengths Available

3'-12"	Oak, Poplar, Cherry, Mahogany
3'-16"	Solid VG Fir, Solid Flat Grain Fir
17'	Raw & Primed FJ Pine

• Kerfing for Bullnose is available

• Custom widths available

• Random lengths only available in most solid wood species.

• No Screen Rab't

Domestic Primed FJ Pine Exterior Frames

Size	6/8	8/0	
4-1/8	PR418W6D	PR418W8D	N/S
4-5/8	PR458W6D	PR458W8D	N/S
4-3/4	PR434W6D	PR434W8D	S
5-1/4	PR514W6D	PR514W8D	N/S
6-5/8	PR658W6D	PR658W8D	N/S
7-1/4	PR714W6D	PR714W8D	N/S



20 Minute Fire-Rated Door Jamb

for 1-3/4" Doors with Weatherstrip Kerf

2-1/4" thick with 1/2" x 2-1/8" Door Rab't

SIZE	SPECIES	6/8	8/0	
4-1/8	Primed FJ	FRPR418WS6	FRPR418WS8	S
4-5/8	Primed FJ	FRPR458WS6	FRPR458WS8	N/S
	FJ Pine	FR458WS6	FR458WS8	N
4-3/4	Primed FJ	FRPR434WS6	FRPR434WS8	S
5-1/4	Primed FJ	FRPR514WS6	FRPR514WS8	N/S
	FJ Pine	FR514WS6	FR514WS8	N
7-1/4	Primed FJ	FRPR714WS6	FRPR714WS8	N/S
	FJ Pine	FR714WS6	FR714WS8	N



* 20 Minute Fire-Rated Exterior Frames: Sold in 3/0 sets only. Inquire for primed material in unprimed sizes.

**EXTERIOR DOOR JAMBS/FRAMES** **Composite Exterior Door Frames**for 1-3/4" Doors with Weatherstrip Kerf
with 1/2" x 2-1/8" Door Rab't

SIZE	SPECIES	6/8	8/0	LINEAL	
4-9/16	Primed Composite	PF4916W6	PF4916W8	—	N/S
	Oak Composite	WG4916W6	WG4916W8	—	N/S
	Primed FJ Frame Saver	FS4916W6	FS4916W8	—	N/S
	Mahogany Composite	MHG4916W6	MHG4916W8	MHG4916W20 (20')	N/S
5-1/4	Primed Composite	PF514W6	PF514W8	—	N/S
	Oak Composite	WG514W6	WG514W8	—	N/S
	Primed FJ Frame Saver	FS514W6	FS514W8	—	N/S
	Mahogany Composite	MHG514W6	MHG514W8	—	N/S
6-9/16	Primed Composite	PF6916W6	PF6916W8	—	N/S
	Oak Composite	WG6916W6	WG6916W8	—	N/S
	Primed FJ Frame Saver	FS6916W6	FS6916W8	—	N/S
	Primed Frame Saver Dbl. Rab't	FS6916DR6	—	—	N/S
	Mahogany Composite	MHG6916W6	MHG6916W8	MHG6916W20 (20')	N/S
7-1/4	Primed Composite	PF714W6	PF714W8	PF714W12 (12')	N/S
	Oak Composite	WG714W6	WG714W8	—	N/S
	Primed FJ Frame Saver	FS714W6	FS714W8	—	N/S
	Primed FJ Frame Saver Dbl. Rab't	FS714DR6	—	—	N/S
	Mahogany Composite	MHG714W6	MHG714W8	MHG714W20 (20')	N/S

EXTERIOR DOOR JAMBS

MISCELLANEOUS

JAMB EXTENSION **Window Jamb Extension**

(for Anderson™ Windows)

11/16 x 3-15/16

JAMBEXT Solid Pine N**KERF STRIPS** **Bullnose Kerf Strips**

3/16 x 1-1/4

KS6 White PVC (81") N/S**KS8** White PVC (97") N/S**Q-LON® WEATHERSTRIP****Q-Lon**

9/16 x 1

Q7W White (7") N/S**Q8W** White (8") N/S**Q10W** White (10") N/S**Q7B** Bronze (7") N/S**Q8B** Bronze (8") N/S**Q10B** Bronze (10") N/S**Long Reach Q-Lon**

9/16 x 2-1/8

LRQ7W White (7") S **LRQ7B** Bronze (7") S

Formerly SQ7W ▼ Formerly SQ7B ▼

LRQ8W White (8") N/S **LRQ8B** Bronze (8") N/S**LRQ10W** White (10") S **LRQ10B** Bronze (10") S

Formerly SQ10W ▼ Formerly SQ10B ▼

**Q-Lon for T-Astragals**

5/8 x 13/16

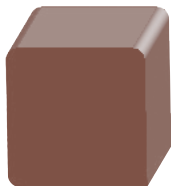
TQ7W White (7") N/S**TQ8W** White (8") N/S**TQ7B** Bronze (7") N/S**TQ8B** Bronze (8") N/S**Q-Lon with Low Wick Foam**

5/8 x 1

Q7W-LW White (7") S **Q8W-LW** White (8") S**Q7B-LW** Bronze (7") S **Q8B-LW** Bronze (8") S**Dutch Leaf Q-Lon**

15/32 x 1/2

QWL White S**QBL** Bronze S



Premium Grade Furring Strips

2 x 2 x 8'

FS2X2 SPF N/S



Premium Grade Furring Strips

1 x 2 x 8'

FS1X2 SPF N/S

FURRING STRIPS

Sold by unit only

FLASHING & SEALANT

MISCELLANEOUS

Moistop PF (300' Rolls)

Part #	Width	
6MSPF	6"	N/S
9MSPF	9"	N/S
12MSPF	12"	N/S

Moistop Next (200' Rolls)

Part #	Width	
6MSNX	6"	N/S
9MSNX	9"	N/S
12MSNX	12"	N/S

FortiFlash Peel & Stick (25 mil) (75' Rolls)

Part #	Width	
6FPS	6"	N/S
9FPS	9"	N/S
12FPS	12"	N/S

FutureFlash (75' Rolls)

Part #	Width	
FF9	9"	N/S
FF12	12"	N/S

EZ Seal® Flashing (75' Rolls)

Part #	Width	
6EZ	6"	N/S
9EZ	9"	N/S
12EZ	12"	N/S

White Sealant

Part #	Size	
MSS	10.1oz Tube	N/S

SHIMS

Cedar Wood Shims

3/8 x 1-3/8 x 15-1/4"		
16CS-B	Cedar (bundle)	N/S
3/8 x 1-1/2 x 8"		
CS56	Cedar (carton)	N/S

Beddar™ Wood Shims

3/8 x 1-1/2 x 12"		
CS-1	Beddar Wood Shims	N/S

Pine Wood Shims

3/8 x 1-1/2 x 8"		
PS140	Pine	N/S

TWINE

Twine

Part #	Size	
T	8,500'/roll	N/S

RAW ROUND CORNER & INSIDE/OUTSIDE BASE CORNER



Inside Colonial Base Corner

7/8 x 6-3/4

IBCP	Poplar	N/S
IBC-0	Oak	N/S



Outside Colonial Base Corner

1-1/8 x 6-3/4

OBCP	Poplar	N/S
OBC-0	Oak	N/S



Raw Round Corner
with 3/4" Radius

3/4 x 1-13/16 x 8'

8PBMDF	MDF	N/S
---------------	-----	-----

**PLINTH & BASE BLOCKS****Wellington Rosette Plinth Block**
with Edge Detail**Cambridge Rosette Plinth Block**
without Edge Detail**Architectural Rosette Plinth Block****Springfield Base Block**
with Edge Detail

Part #	Size	Poplar	Primed MDF	Oak	Cherry	Maple	Alder
		P	MDF	O	C	MP	ALD
Wellington Rosette Plinth Block with Edge Detail							
PB1	7/8x2-3/4	●	—	●	—	—	—
PB2	7/8x3-1/2	●	—	●	—	—	—
PB3	7/8x3-3/4	●	—	●	—	—	—
PB4	7/8x5-3/4	●	—	●	—	—	—
ROS158	1x4	●	—	●	—	—	—
ROS160	1x3-3/4	●	●	●	●	●	●
ROS162	1x2-3/4	●	●	●	●	●	●
ROS164	1x4-1/2	●	●	●	●	●	●
ROS165	1x5-1/2	●	●	●	●	●	●
ROS169	1x3-1/2	●	●	●	●	●	●
ROS170	3/4x2-1/2	—	●	—	—	—	—
<i>Formerly ROS170M</i>							
ROS171	3/4x3-1/4	—	●	—	—	—	—
<i>Formerly ROS171M</i>							
ROS172	3/4x3-1/2	—	●	—	—	—	—
<i>Formerly ROS172M</i>							
Cambridge Rosette Plinth Block without Edge Detail							
PB6	7/8x2-3/4	●	—	●	—	—	—
PB7	7/8x3-1/2	●	—	●	—	—	—
PB8	7/8x3-3/4	●	—	●	—	—	—
PB9	5/8x2-1/2	●	—	●	—	—	—
PB10	3/4x3-1/4	●	—	●	—	—	—
PB11	3/4x3-1/2	●	—	●	—	—	—
PB20	1x2-3/4	●	●	●	●	●	●
PB21	1x3-1/2	●	●	●	●	●	●
PB22	1x3-3/4	●	●	●	●	●	●
PB23	1x4-1/2	●	●	●	●	●	●
PB24	1x5-1/2	●	●	●	●	●	●
Architectural Rosette Plinth Block							
ROS166	1x3-3/4x5-3/4	●	—	●	—	—	—
ROS167	1x4-1/2x6-1/2	●	—	●	—	—	—
ROS168	1x5-1/2x7-1/2	●	—	●	—	—	—
Springfield Base Block with Edge Detail							
1BB <i>Formerly 1BBM</i>	3/4x3-1/4x6-1/2	—	●	—	—	—	—
2BB <i>Formerly 2BBM</i>	3/4x3-1/2x6-1/2	—	●	—	—	—	—
3BB <i>Formerly 3BBM</i>	3/4x2-1/2x5-3/4	—	●	—	—	—	—
4BB <i>Formerly 4BBM</i>	1-1/4x3-1/4x6-1/2	—	●	—	—	—	—
5BB <i>Formerly 5BBM</i>	1-1/4x3-1/2x6-1/2	—	●	—	—	—	—
6BB	7/8x2-3/4x6	●	—	●	—	—	—
7BB	7/8x3-1/2x6	●	—	●	—	—	—
8BB	7/8x3-3/4x6	●	—	●	—	—	—
9BB	1x5-3/4x8	●	—	●	—	—	—
35BB	1x2-3/4x6	●	●	—	●	●	●
36BB	1x3-1/2x6	●	●	—	●	●	●
37BB	1x3-3/4x6	●	●	—	●	●	●
38BB	1x4-1/2x8	●	●	—	●	●	●
39BB	1x5-1/2x8	●	●	—	●	●	●



PLINTH & BASE BLOCKS



Plain Springfield Base Block
with Edge Detail



Rosette Base Block
without Edge Detail



Fluted Rosette Base Block



Colonial Base Block
with Rosette



Colonial Base Block



Craftsman Base Block

Part #	Size	Poplar	Primed MDF	Oak	Cherry	Maple	Alder
		P	MDF	-O	C	MP	ALD
Plain Springfield Base with Edge Detail							
38BB_PL	1x4-1/2x8	●	●	●	—	—	—
Rosette Base Block without Edge detail							
14BB	7/8x2-3/4x6	●	—	●	—	—	—
15BB	7/8x3-1/2x6	●	—	●	—	—	—
16BB	7/8x3-3/4x6	●	—	●	—	—	—
40BB	1x2-3/4x6	●	●	●	●	●	●
41BB	1x3-1/2x6	●	●	●	●	●	●
42BB	1x3-3/4x6	●	●	●	●	●	●
43BB	1x4-1/2x8	●	●	●	●	●	●
44BB	1x5-1/2x8	●	●	●	●	●	●
Fluted Rosette Base Block with Edge Detail							
18BB	7/8x3-3/4x7	●	—	●	—	—	—
Colonial Base Block with Rosette							
185BB Formerly PB185	1x4-1/2x8	●	—	●	—	—	—
186BB Formerly PB186	1x5-1/2x8	●	—	●	—	—	—
192BB Formerly PB192	1x3x5	●	—	●	—	—	—
193BB Formerly PB193	1x4x7	●	—	●	—	—	—
Colonial Base Block							
10BB	7/8x2-3/4x6	●	—	●	—	—	—
11BB	7/8x5-3/4x8	●	—	●	—	—	—
12BB	7/8x3-3/4x6	●	—	●	—	—	—
13BB	7/8x3-1/2x6	●	—	●	—	—	—
21BB	3/4x2-1/2x5-3/4	●	—	●	—	—	—
22BB	1x3-1/4x6-1/2	●	—	●	—	—	—
23BB	1x3-1/2x6-1/2	●	—	●	—	—	—
183BB Formerly PB183	1x4-1/2x8	●	—	●	—	—	—
187BB Formerly PB187	1x5-1/2x8	●	—	●	—	—	—
190BB Formerly PB190	1x4x7	●	—	●	—	—	—
191BB Formerly PB191	1x3x5	●	—	●	—	—	—
194BB Formerly PB194	1x2-3/4x6	—	●	●	●	●	●
195BB Formerly PB195	1x3-1/2x6	—	●	●	●	●	●
196BB Formerly PB196	1x3-3/4x6	—	●	●	●	●	●
197BB Formerly PB197	1x4-1/2x6	—	●	●	●	●	●
198BB Formerly PB198	1x5-1/2x6	—	●	●	●	●	●
Craftsman 1 Eased Edge Base Block							
30BBALD	1-1/4x4-1/4x6-3/4	—	—	—	—	—	●
PR30BB	1-1/4x4-1/4x6-3/4	●	—	—	—	—	—

PLINTH & BASE BLOCKS



ALSO AVAILABLE FROM EL & EL

MAJESTIC *Mantels* Shelves & Surround Kits

Majestic Mantels by EL & EL are available in MDF, Poplar, Oak, and Embossed/High Relief. These styles of shelves are "flush mount," with a bottom projection of 3-1/4" inches. All shelves are available in 2'-6' lengths, and 9 different styles (custom lengths and styles are available).

MDF (Medium Density Fiberboard) is made from wood fibers and is a great low cost alternative to wood. Its hard surface resists dents and scratches and its low cost will save you money on your painted applications.



Carolina MDF Majestic Mantel

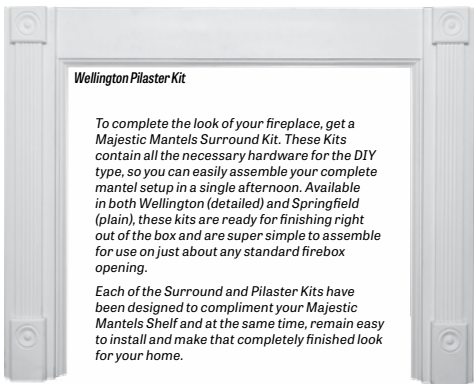
Majestic poplar mantels are made of solid clear poplar that can either be painted or stained.

Oak mantels are made of clear red oak and ideal for staining.



Large Dentil Oak Majestic Mantel

Embossed/High Relief mantels are made from clear poplar.



Wellington Pilaster Kit

To complete the look of your fireplace, get a Majestic Mantels Surround Kit. These Kits contain all the necessary hardware for the DIY type, so you can easily assemble your complete mantel setup in a single afternoon. Available in both Wellington (detailed) and Springfield (plain), these kits are ready for finishing right out of the box and are super simple to assemble for use on just about any standard firebox opening.

Each of the Surround and Pilaster Kits have been designed to compliment your Majestic Mantels Shelf and at the same time, remain easy to install and make that completely finished look for your home.

ALSO AVAILABLE

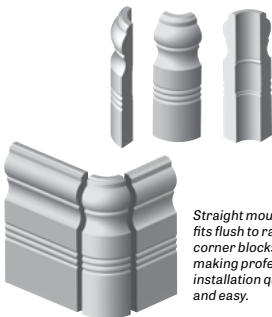
Bullnose Base Corners

Many homes today offer the look of eased rounded corners, called bullnose corners, where drywall edges meet. These rounded edges soften and enhance the look of the house.

When baseboard is installed, radius corners continue the eased corner look, creating a beautiful and elegant enhancement at very little cost.

Radius corners can be manufactured in any wood species.

All base profiles are available in radius corners for 3/4" drywall corners. Custom radius corners are available upon request.



Straight moulding fits flush to radius corner blocks, making professional installation quick and easy.



ALSO AVAILABLE FROM EL & EL

ValuFlex™ Flexible Mouldings

EL & EL Wood Products Corporation manufactures on its premises, ValuFlex Flexible Mouldings, using the highest quality urethane available in today's market. With ValuFlex, you get all the advantages of radiused wood at a fraction of the cost.

Most products in our catalog are available in flexible moulding. Custom profiles are available and made to order, upon request.

BENEFITS OF USING VALUFLEX FLEXIBLE MOLDING

- Superior Lead Times
- Match Any Profile
- Paints & Stains Beautifully
- Incredible Detail
- Custom Profiles Available
- Limited 5-Year warranty against cracking or splitting
- Tear Resistant
- Minimal Shrinkage

GENERAL INFORMATION ON VALUFLEX

- Just about every EL & EL wood moulding profile can be reproduced in ValuFlex Flexible Moulding.
- ValuFlex is our standard resin flexible moulding and can be used for all profiles. We use only the highest quality urethane on all ValuFlex products for a strong tear resistance. This also ensures little to no shrinkage, a softer more pliable product, easy to install, and a 5 year warranty against cracking or splitting.
- All urethane is sold by the whole foot only. The minimum length is 5' and the maximum mold length is 12', however to receive material longer than 12' a process is now available to achieve longer lengths at an additional cost.
- Select paintgrade moulding profiles (such as 304, 310, 311, 314, 329, and 330) are available in 50' rolls. Call for stain-grade available lengths.
- ValuFlex is sold in straight and pre-formed pieces:
 - Straight pieces are used for standard base, chair rail and jamb applications.
 - Casing, crown and built-up applications require pre-formed pieces. Pre-formed pieces are achieved by providing precise measurements, radius or a template. Pre-formed pieces only have a variance of approximately 1" to 2", hence the importance of precise information.
- Curved crown applications, by far the most diverse, require a few simple rules of thumb (see "Calculating Radiussed Moulding" on the next page) to easily accomplish a perfect fit without stressing the material. A built-up is several pieces of mouldings put together, making a more dramatic application.

*ValuFlex Flexible Mouldings are warranted for indoor use only.

Simple Solutions™ Miterless Radius Crown Corners

Simple Solutions is a new resin miterless radius crown corner solution to ease installation and create a great finished look. No mitering, no difficult angle configurations, no need for additional material (in case of mitering errors) and best of all, Simple Solutions crown corners will enhance and add architectural beauty to any home. Simple Solutions miterless crown corners are made specifically to match most Ultralight MDF (MUL) crown profiles only and are available for inside, outside and bullnosed corners.



Inside Corner



Outside Corner



Outside Bullnose Corner

ALSO AVAILABLE

**ALSO AVAILABLE FROM EL & EL****HB&G™ Columns & Porch Systems****HB&G PermaCast® Columns**

PermaCast® columns, made from structural fiberglass, maintain architectural authenticity and historical accuracy. They can be used as support or decorative columns. They require minimal maintenance and are weatherproof, insect proof, and highly durable.

HB&G PermaLite® Columns

HB&G PermaLite® square and round columns are cost effective, load bearing, weather and insect proof, and require very little maintenance.

HB&G PermaPorch® Railing

The most versatile and natural looking synthetic rail system available. Often mistaken for wood, our low maintenance synthetic rail is made from cellular PVC and is available with aluminum inserts.

HB&G PermaPorch® Ceiling

PermaPorch® Ceiling is another maintenance-free porch product offered by HB&G. It can be used as a beaded ceiling or as an accent to any room, and comes in white.

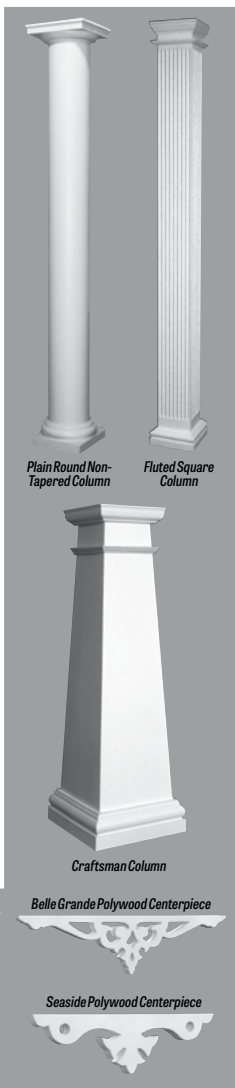
HB&G PermaPost® Porch Posts

HB&G's PermaPost® porch posts are prefinished and low maintenance. They add an inviting, decorative look to your front porch.

Capitals & Bases

HB&G manufactures the only column capital that provides a sealed cap flashing, preventing weather and the elements from entering the interior of the shaft. This flashing is great for outdoor column installations. HB&G standard capitals and bases are manufactured using foam polyurethane, making them extremely lightweight and economical.

EL & EL also manufactures matching capitals and bases made from high grade urethane that are extremely strong, dense, and durable.

*Plain Round Non-Tapered Column**Fluted Square Column**Craftsman Column**Belle Grande Polywood Centerpiece**Seaside Polywood Centerpiece**Roman Corinthian Decorative Capital**Temple of the Winds Decorative Capital*

For Special Order items, please visit the EL & EL website at www.ELandELWoodProducts.com or contact a sales representative.

ALSO AVAILABLE



ALSO AVAILABLE FROM EL & EL

Fypon® Polyurethane

Fypon gives design and construction professionals an edge over all other interior and exterior design building materials. Fypon marries style and performance with one of the industry's largest product offerings and best customer service to give our customers a true competitive edge.

Fypon Style

Fypon is the recognized leader in polyurethane product design, innovation and molding technology. From old world style to classic modern design, Fypon offers the largest and most architecturally correct styles and designs of moulding and trim.

- Architecturally correct and historically accurate product styles and designs.
- Our products are designed to capture the texture, patterns and deep shadow lines of classic building materials.
- A distinctive look and personality to complement any home design for maximum appeal.

Fypon Performance

Only Fypon engineers consistent quality and long lasting performance into every product we make. From our popular trim and mouldings, to our balustrade systems and decorative millwork, each product is manufactured by experts in polyurethane molding technology. All Fypon building products:

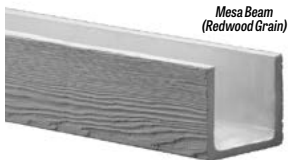
- Are easy to install with no special tools or extra labor necessary,
- Deliver consistent workmanship and product quality,
- Feature low maintenance,
- Provide weather and moisture resistance,
- Come stain or paint ready,
- Resists insects and won't warp, crack, or split.



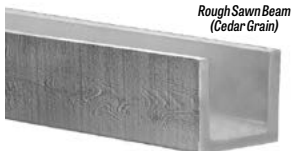
*Tahoe Beam
(Cedar Grain)*



*Hand Hewn Beam
(Elm Grain)*



*Mesa Beam
(Redwood Grain)*



*Rough Sawn Beam
(Cedar Grain)*



*Ogee Style
Corbel*



*Cove Style
Knee Brace*



*Symmetria Ceiling
Medallion*



Hammered Beam Plate



*Functional
Vertical Louver*

ALSO AVAILABLE

For Special Order items, please visit the EL & EL website at www.ELandELWoodProducts.com or contact a sales representative.

**ALSO AVAILABLE FROM EL & EL****White River™ Embossed & Mon Reale Mouldings****Embossed Mouldings**

White River's Ornamentally Embossed Collection offers 80 profiles embossed with classically-inspired motifs to add interest and detail to any interior millwork application. Ornamental motifs are created by applying heat and pressure to solid poplar mouldings that install with standard woodworking tools.

**CR68** Rab't Chair Rail**CM72** Egg & Dart Cornice**Mon Reale Mouldings**

White River's Mon Reale Collection offers 97 opulent classically-inspired, sculptured profiles — their premier line for high-relief details. Mon Reale Mouldings are made from a fine grain overlay contoured to solid poplar moulding that install with standard woodworking tools.

**CM8859** Egg & Lamb's Tongue Crown**BB8111** Petite Acanthus Leaf Back Band**Ultra-Flex™ Flexible Resin Moulding** 

White River's proprietary Ultra-Flex is the most advanced product in the industry for all flexible moulding applications, indoors and outdoors, and can be manufactured for all of White River's profiles. It cuts and nails the same as its wood counterparts and comes with a latex-based primer coat—ready to stain, paint, or glaze.

ALSO AVAILABLE

For Special Order items, please visit the EL & EL website at www.ELandELWoodProducts.com or contact a sales representative.

INDEX

Apron	59
Astragal.....	66
Base.....	21
Base Blocks.....	98
Base Shoe Corner	20
Bead/Screen Moulds.....	65
Bodyguard® Exterior Moulds.....	82
Bodyguard® Exterior Siding	83
Bullnose Round Corners.....	100
Casing.....	5
Chair Rail.....	56
Closet Accessories.....	73
Colonial Base Corners	97
Crown & Cornice	40
Dentil Lineal.....	55
Door Header Casing/Cap	19
Door Jamb	
Interior.....	90
Exterior	92
Dowels / Dowel Pins	75
Exterior Door Jamb/Frames	
with Weatherstrip Kerf.....	94
Standard without Weatherstrip Kerf.....	92
Exterior Moulds	80
Exterior Sill	86
Flashing.....	97
Furring Strips	97
Fypon® Polyurethane.....	103
Handrail	58
HB&G™ Columns & Porch Systems	102
Hook & Cleat.....	72
Interior S4S.....	88
Jamb Extension	96
Kerf Strips.....	96
Lattice	76
Majestic Mantels™ and Surround Kits.....	100
Mull Posts & Cover.....	68
Nose & Cove.....	68
Outside Corner Guard	77
Pakari™ Thermally Modified Lumber.....	87
Panel Mould.....	60
Panel Cap.....	62
Plinth Blocks.....	98
Protected Exterior Trim	84
Q-Lon® Weatherstripping	96
Raw Round Corner	97
Reducer.....	85
Rope (Half Round / Full Round)	77
Rounds (Quarter / Half / Full)	76
Screwhole Plugs.....	75
Sealant.....	97
Shelving.....	74
Shims.....	97
Sill Pan.....	87
Simple Solutions™ Miterless Crown Corners	101
Stop	39
T&G Wainscot.....	78
T-Mould	85
Threshold	85
Trimboard (Interior / Exterior).....	87
Twine	97
ValuFlex™ Flexible Moulding	101
Wall Cap	75
White River® Moulding.....	104
Window Stool.....	70

FOLLOW US ON



ELANDELWOODPRODUCTS.COM



DOWNLOAD THE MOST
UP-TO-DATE VERSION
TO YOUR DEVICE.